

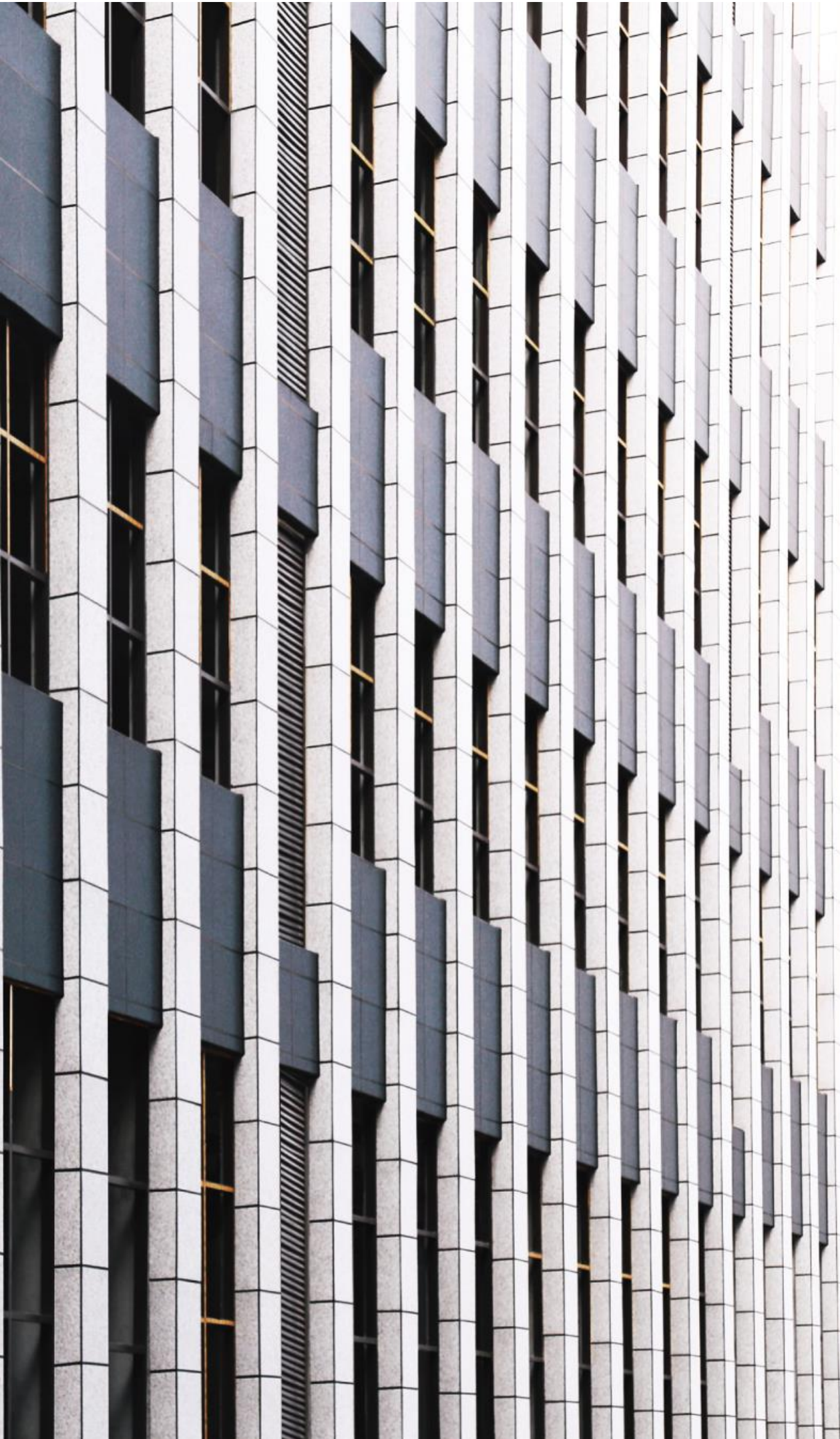
GAJCladding Systems & Products

GAJCladding Brochure 2024



GAJ CLADDING

FOCUSED FOR OVER 20 YEARS



GAJCLADDING

Contents

| | |
|-----------------------------------|----|
| About US | 3 |
| Development History | 5 |
| About GAJCladding Shield | 7 |
| Back-ventilated Rainscreen System | 11 |
| GAJCladding H-Shield | 13 |
| GAJCladding V-Shield | 15 |
| GAJCladding U-Shield | 17 |
| Shield Textures and Colors | 19 |
| Metalshell Series | 21 |
| Ceramicshell Series | 23 |
| Pearlshell Series | 25 |
| Matteshell Series | 27 |
| Fabricshell Series | 29 |
| Graniteshell Series | 31 |
| Splendidshell Series | 33 |
| Wiryshell Series | 35 |
| Relievoshell Series | 36 |

ABOUT US

22

Years of Experience

20,000

Production Base(m²)

8,000,000

Annual Production(m²)

76

Patents

FOCUSED FOR OVER 20 YEARS

"GAJ" was established in 2002, specializing in the research, design, production, sales, and service of "energy-saving & decorative" systems for building envelopes. We focus on high-end fiber cement decorative boards, offering a range of textures and colors in our fiber cement cladding systems to provide better solutions for constructing high-performance building envelopes.

Professionalism, dedication, and sincere service are our guiding principles. We are customer-centric, addressing customer concerns and challenges by providing systematic solutions and delivering reliable, high-quality products and services.

Our goal is to become a leader in building envelope system solutions, striving for higher standards, maintaining a progressive mindset, and driving the industry's development.



Development History

2002~2008

- 2002**
 - Created the first panelized exterior wall covering product;
 - Patented and applied powder coating technology
- 2005**
 - Go-live of the first automated assembly line for exterior wall composite panels
- 2006**
 - Patented and applied the exterior wall composite panel structure
- 2008**
 - Certified as Energy-saving Building Product

2009~2011

- 2009**
 - Won State Award of Leading Brand of the year in exterior wall industry;
 - Became Editor of "State Building Code for the Exterior Wall Composite Panel"
- 2010**
 - Certified as ISO 9501 for manufacture
- 2011**
 - Large-scale automated production facilities on line, annual production capacity of 8 million square metres;
 - Awarded "Chongqing High-tech Product"

2012~2013

- 2012**
 - Awarded the title of high-tech enterprise in Chongqing
 - Director unit of China Building Energy Efficiency Association
- 2013**
 - Became Editor of "Building External Wall Thermal Insulation Fire Isolation Belt Technical Specifications"
 - Became Editor of "Thermal Insulation and Decorative Composite Board External Wall Insulation System Application Technical Regulations"
 - Became Editor of "Thermal Insulation and Decorative Composite Board External Insulation System Building Construction"

2014~2016

- 2014**
 - Recognised as green building products
 - Became Editor of "Thermal Insulation and Decorative Panel External Wall Insulation System Materials"
- 2015**
 - Awarded with invention patent of Slotted Anchoring Insulation Panel System.
 - Built the largest exterior wall insulation panel project of the year in Asia.
- 2016**
 - Became Editor of "State Engineering Guidelines for Exterior Wall Insulation System"
 - Creation of the "Wallshell" brand to enter the North American market

2017~2019

- 2017**
 - Member of AWCI USA, Debut in INTEX 2017
 - Member of NAHB USA, Debut in IBS 2017
 - Achieving compliance with ASHARE 90.1
- 2018**
 - Award of ICC ESR for U-Shield and V-Shield panel systems
- 2019**
 - Became AIA CES provider
 - Certified as ISO 14001
 - Certified as ISO 45001

2020~2023

- 2020**
 - Obtained Green Building Material Certification
- 2021**
 - Participation in the "Study on the Development Path of Passive Ultra-low Energy Building Materials"
- 2022**
 - Won the SDC competition and completed the 48-hour zero energy challenge
- 2023**
 - Became Editor of "Technical Standards for the Application of Assembled Thermal Insulation and Decorative Panel Wall Insulation System"



GAJCladding Shield

The source of magnificence, the power of endurance, and the accent of individuality, GAJCladding, High-strength carrier board, Unique pretreatment process, and Scientific coating process to ensure exceptional coating adhesion. With its wide-range of texture and color coated façade panels, provides you with an endless inspiration, a realization of architect's original vision and a comprehensive and versatile solution for your creative individuality.



High-strength Carrier Board, Exclusive Pre-treatment

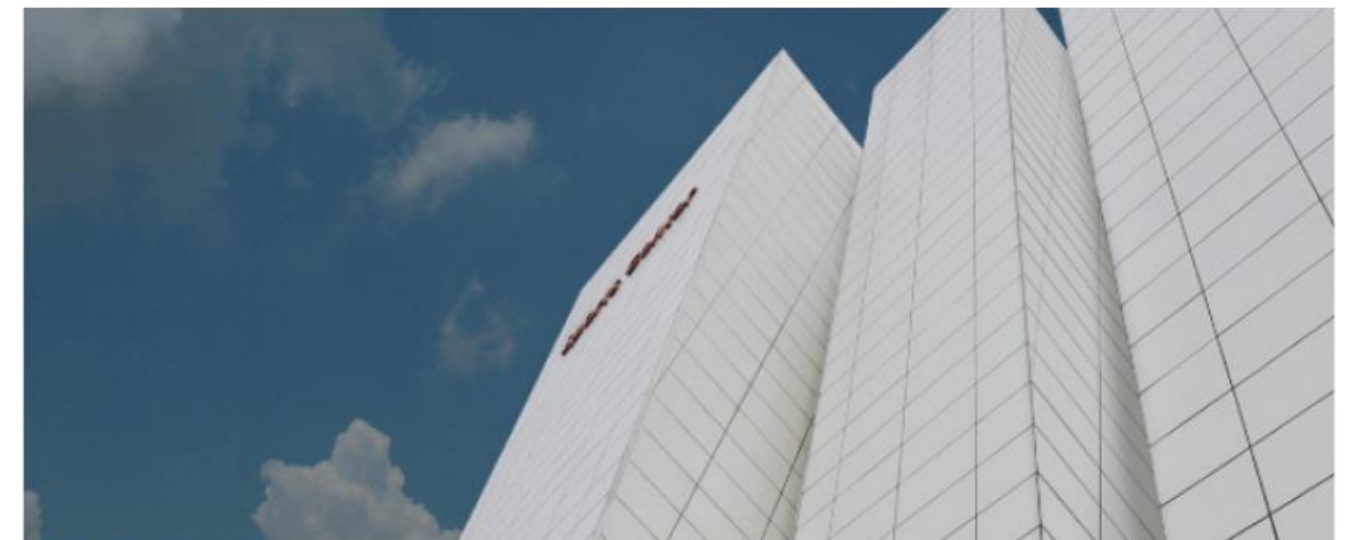
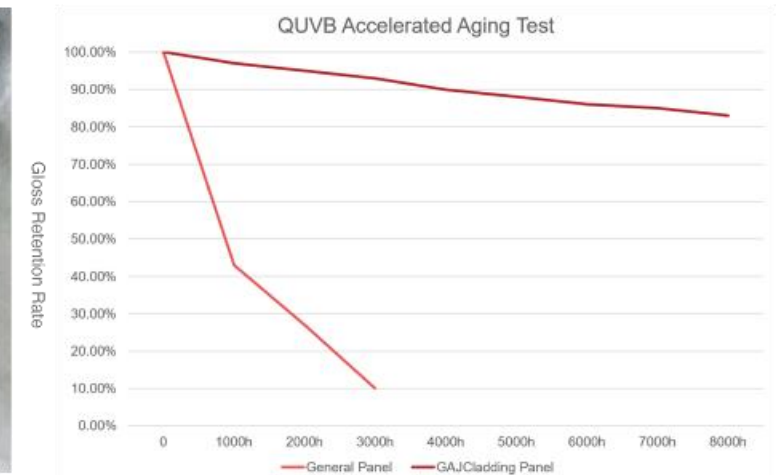
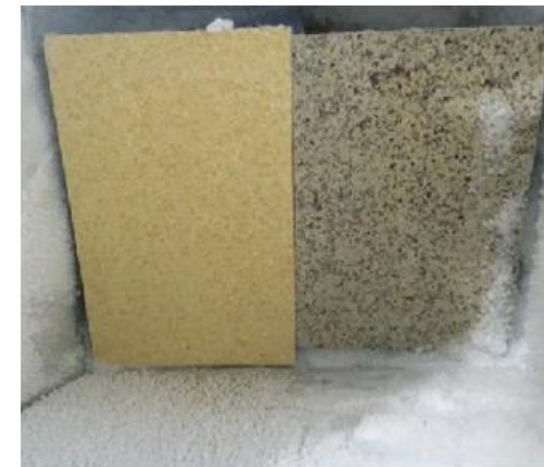
Applying a coating to fiber cement boards is not as simple as just layering the coating onto the material. High-density fiber cement boards have a water absorption rate close to 20%, so before coating, we need to perform a pre-treatment to reduce the substrate's water absorption rate and seal the pores in the fiber cement board.

GAJCladding's pre-treatment not only seals the board but also reacts with the fiber cement, enhancing the interlayer bonding strength of the board. Additionally, it reacts with the subsequent coating, firmly integrating the coating with the substrate to form a cohesive unit. This process lays a solid foundation for the durability of the pre-coated fiber cement board.

Frost Resistance, UV Aging resistance

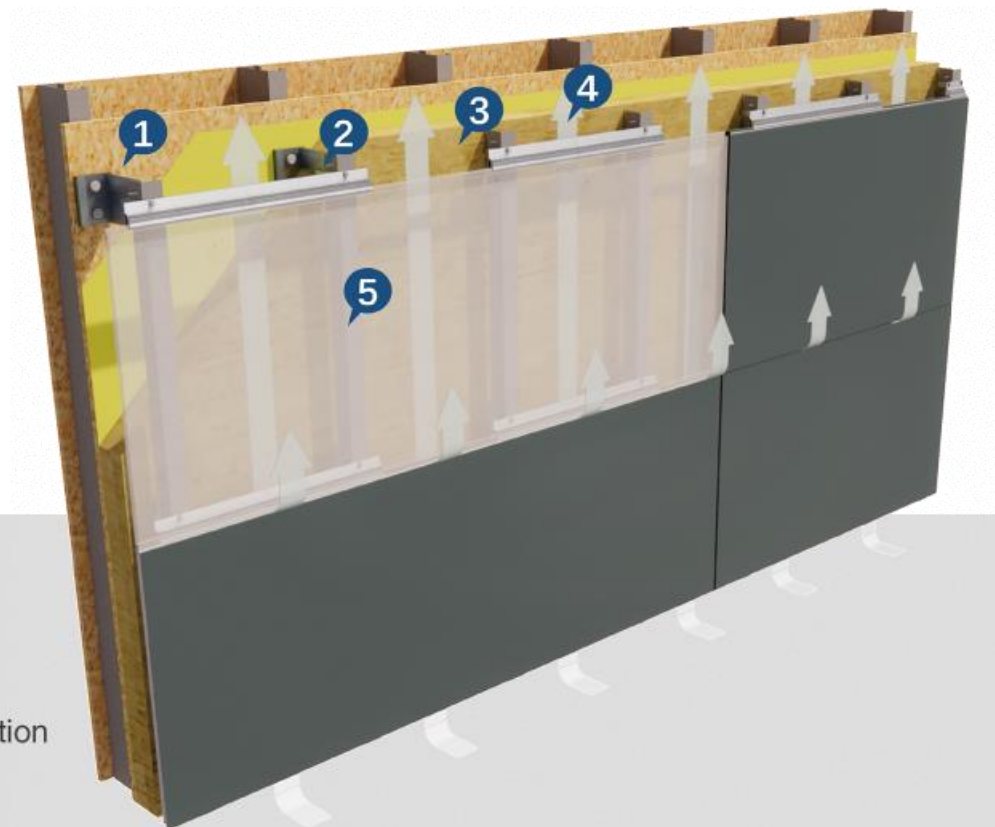
Exterior wall panels face a variety of harsh tests in practical use. Beyond the basic physical performance indicators, the challenge is how to ensure that the panels do not delaminate, peel, or fade, maintaining a like-new appearance over time.

GAJCladding's panels have undergone rigorous testing, including more than 100 freeze-thaw cycles without six-sided waterproof sealing and over 8,000 hours of accelerated UV aging tests, proving their durability and long-lasting performance.



Back-ventilated Rainscreen

The back-ventilated rainscreen system designed for rainscreen cladding applications with rear ventilation, they combined with each other to become the most reliable system. This cladding system not only effectively protects the building and its structure from the elements for a long time, but it also reduces humidity and the air circulation optimizes the efficiency of insulation. Therefore, problems such as mould and fungus do not occur.



1. Exterior Wall
2. Support Frame
3. Exterior Thermal Insulation
4. Ventilated Cavity
5. GAJCladding Shield Panel

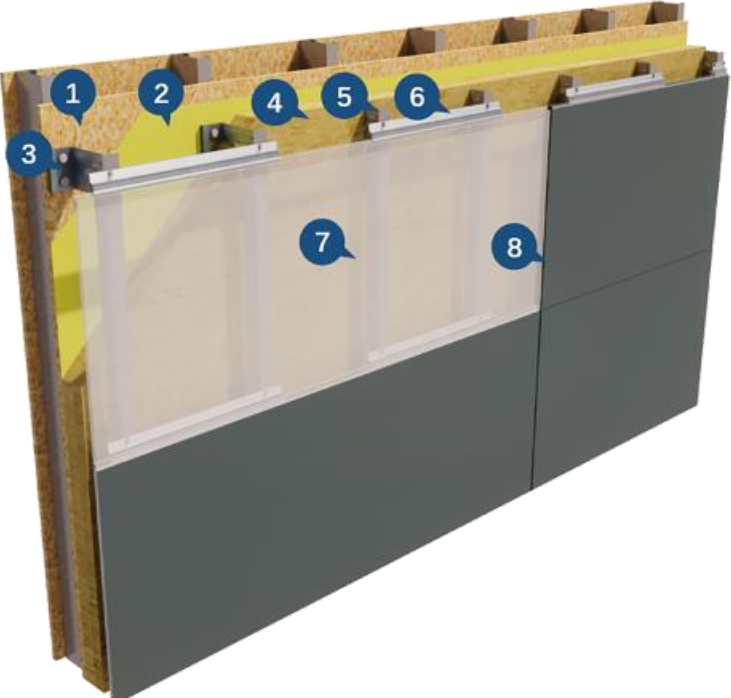


Advantages

- Almost no maintenance;
- Maximum thermal insulation effect, no thermal bridges, keeping the building structure at a constant temperature;
- Humidity / condensation is eliminated;
- Significant energy savings for HVAC;
- No cracks, sealants or painting problems.

GAJCladding H-Shield

The H-Shield Rainscreen System is a concealed anchoring system with a special pre-fabricated panel seam configuration that can be used both to anchor panels and to conceal anchors. The standardized prefabricated panels in multiple sizes can be installed quickly on site and can be adapted to a variety of decorative system.



- 1. Exterior Wall
- 2. Vapor Barrier & Waterproof
- 3. Brackets
- 4. Exterior Thermal Insulation
- 5. Vertical Rail
- 6. H-Shield Clip
- 7. H-Shield Panel
- 8. Weatherproof Sealant & Joint Strip

Overview Panel Sizes

| | |
|---------------|---------------|
| 400x2440x12mm | 400x2440x15mm |
| 600x2440x12mm | 600x2440x15mm |
| 800x2440x12mm | 800x2440x15mm |





GAJCladding V-Shield

The V-Shield Rainscreen System is a visual anchoring system that transforms functional anchoring into a key design element of the building's facade. By making the anchors visible, it not only secures the cladding materials firmly but also contributes to the architectural beauty, offering a modern, industrial look that is both appealing and practical. This system is designed to ensure that each anchor not only supports the structural integrity but also enhances the visual impact, making it a perfect choice for designs that aim to make a statement through exposed mechanical details.



- 1. Exterior Wall
- 2. Vapor Barrier & Waterproof
- 3. Brackets
- 4. Exterior Thermal Insulation
- 5. Horizontal Rail
- 6. Vertical Rail
- 7. V-Shield Panel
- 8. Rivet or Panel Anchor

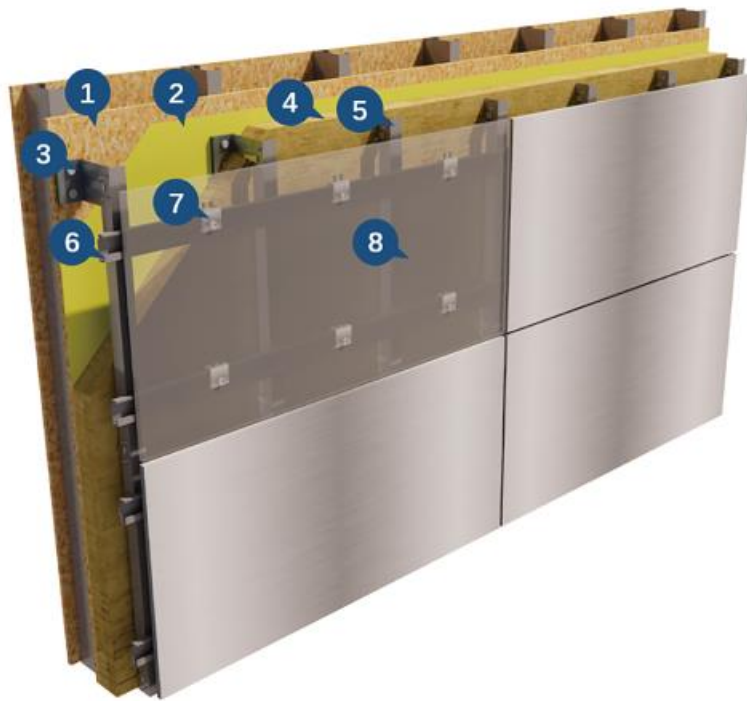


Overview Panel Sizes

- 1220 x 2440 x 8mm
- 1220 x 2440 x 10mm
- 1220 x 2440 x 12mm

GAJCladding U-Shield

The U-Shield Rainscreen System is a sophisticated approach to mounting fiber cement panels, designed to employ the strength and stability of concealed, undercut anchors. Each panel is meticulously pre-drilled at the back to accommodate a specialized hanger clip and expanding bolt anchor, ensuring a secure and enduring attachment. The system is ingeniously paired with a clip cladding support system that bolsters the thermal performance of insulated exterior walls. By separating steel girts from the backup wall, it preserves the complete insulation value and eliminates thermal bridging typically associated with traditional steel girt systems.



1. Exterior Wall
2. Vapor Barrier & Waterproof
3. Brackets
4. Exterior Thermal Insulation
5. Vertical Rail
6. C-Profile Horizontal Rail
7. C-Profile Clip & Undercut
8. U-Shield Panel

Overview Panel Sizes

1220 x 2440 x 12mm

1220 x 2440 x 15mm



Shield Texture and Colors - the Endless Variations

As natural as granite or as shining as metals, GAJCladding's distinctive powder-coated fiber cement panels have been a leading brand for decades in the cladding industry. Its unique natural look and timeless beauty provide an exciting and noble expression to every building. The special coating also shows strong scratch resistance and offers lasting defense against graffiti. GAJCladding has taken all that is great about fiber cement and engineered it into the magnificent rain screen and weather barrier cladding systems that stand out in the construction world.



Metalshell



Texture: Satin

Customized Color: Upon Request

The Metalshell color series are GAJCladding unique pigmented finishes. The selected metallic colors are coated with the super durable powders to achieve required performance as well as real metal expression, such as steel, copper, aluminum, silver or gold. These color series are usually selected by architects for high value buildings.



M10 (Silver Flash)



M15 (Alum Flash)



M30 (Grey Flash)



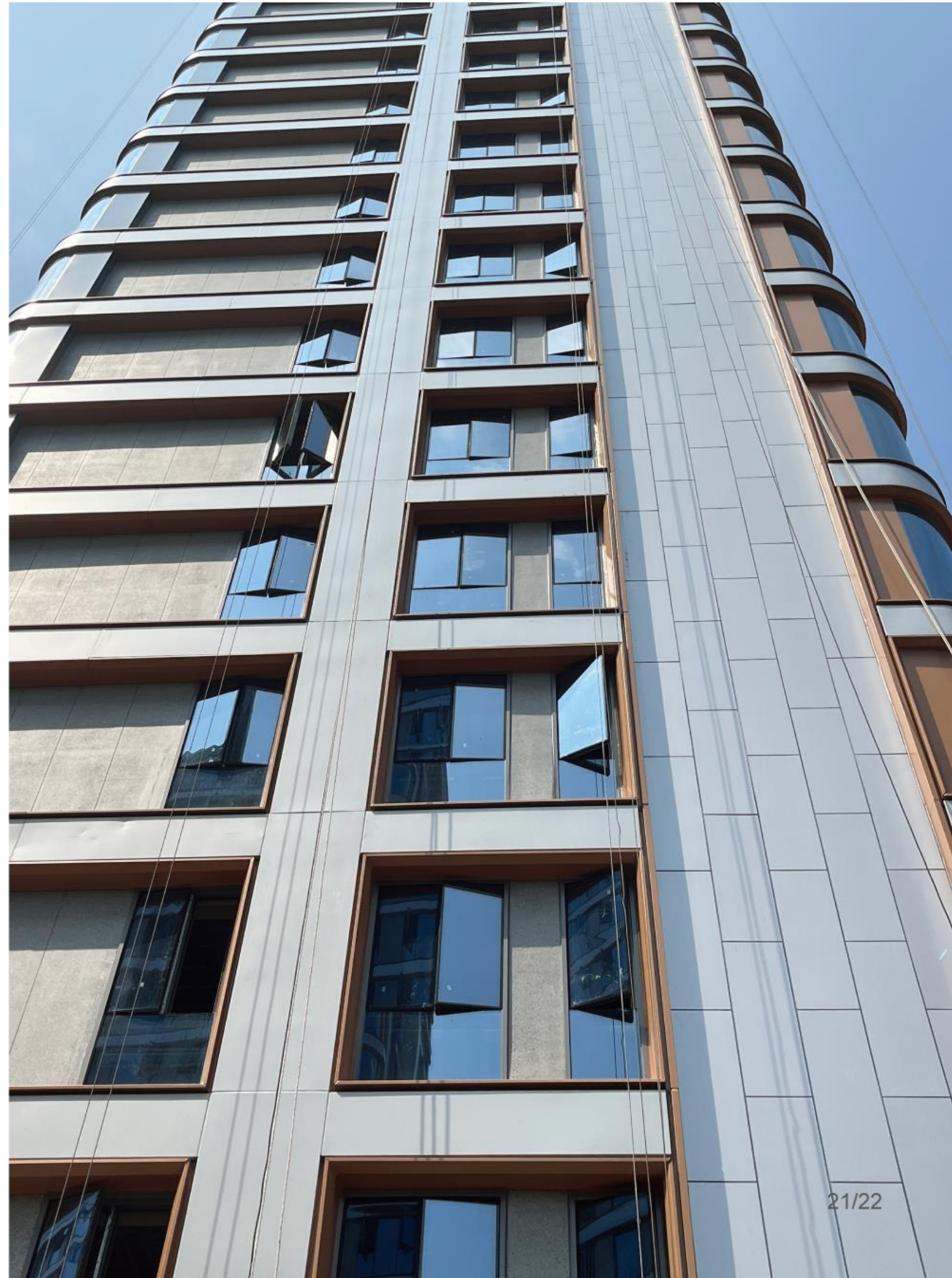
M40 (Iron Flash)



M50 (Gold Flash)



M70 (Coffee Flash)



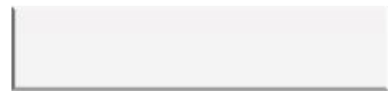
Ceramicshell



Texture: Satin

Customized Color: Upon Request

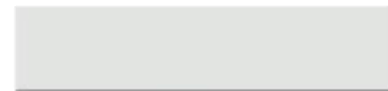
The Ceramicshell color series use high performance fluoropolymer powders to achieve the durability of colors and gloss. With satin grade texture, its various distinctively pigmented finishes can give the façade a modern and avant-garde expression without any color limitations.



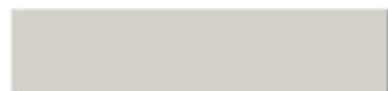
110 (White Ceramic)



115 (Porcelain White)



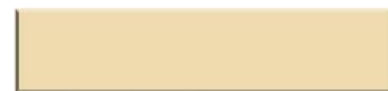
130 (Pearl White)



150 (Ivory White)



201 (White Straw)



204 (Dry Straw)



205 (Bronze Ash)



210 (Loess Brown)



305 (Orange Ceramic)



505 (Loess Brown)



515 (Brown Clay)



535 (Brick Red)



555 (Chocolate Brown)



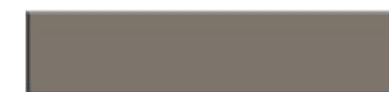
615 (Grey Ash)



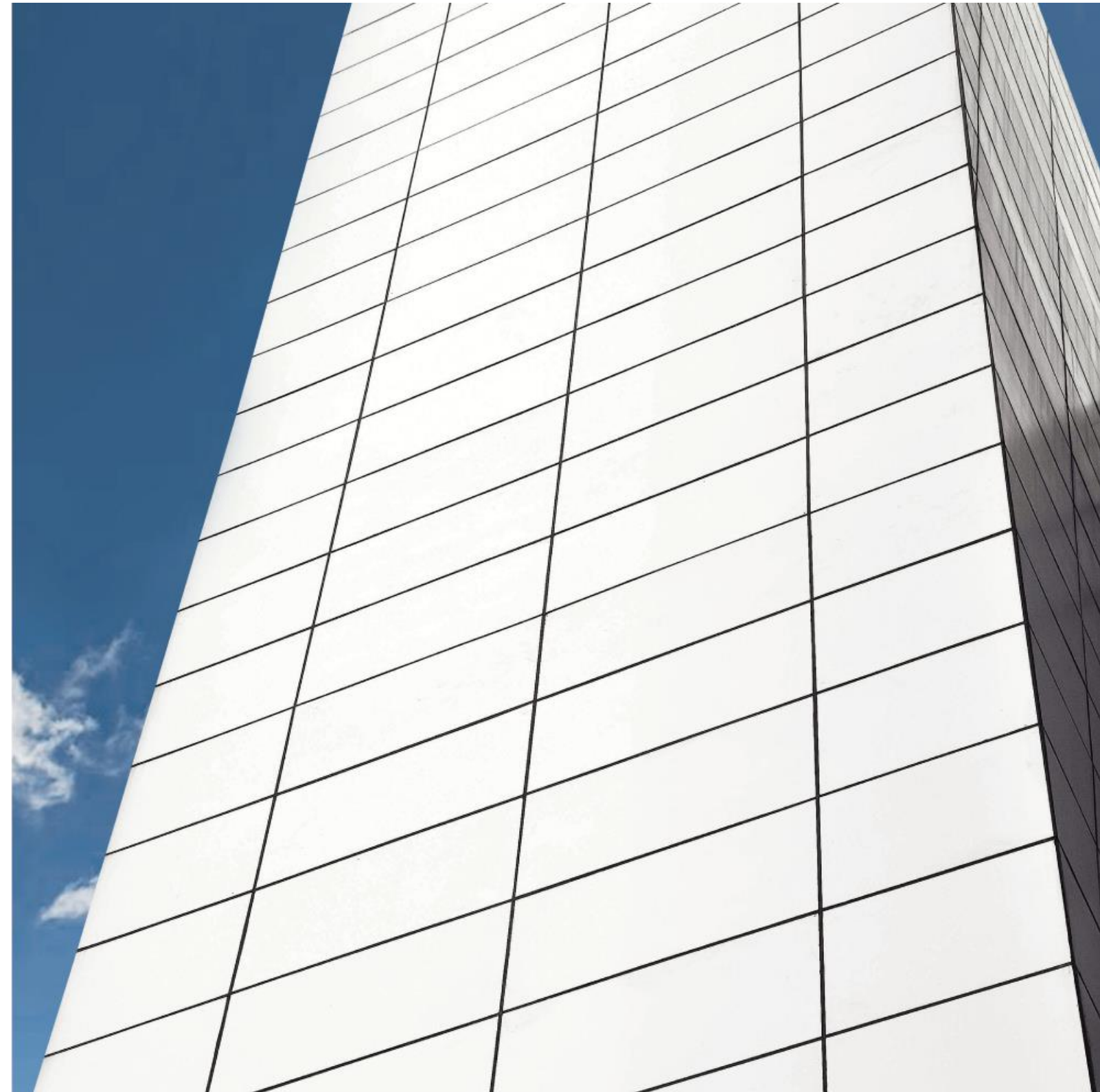
640 (Dim Grey Ash)



650 (Iron Ash)



660 (Dark Slate Ash)



Pearlshell



Texture: Satin

Customized Color: N/A

The Pearlshell color series are GAJCladding distinctive pigmented finishes by adding pearl powder to achieve façade unexpected color illusive or shimmering effect.



P10(Chameleon Apricot)



P20(Chameleon Cyan)



P30(Chameleon Blue)



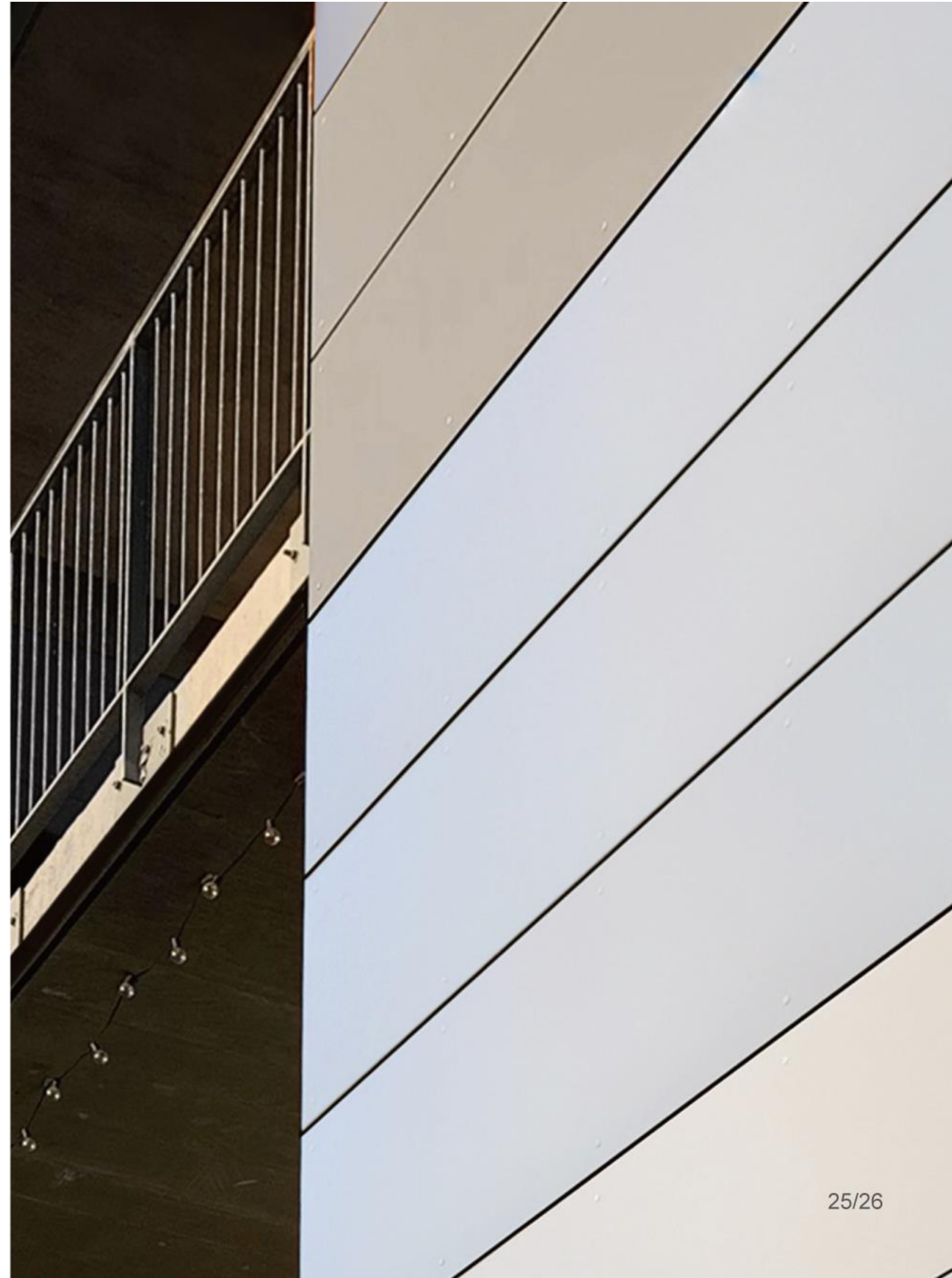
P40(Chameleon Magenta)



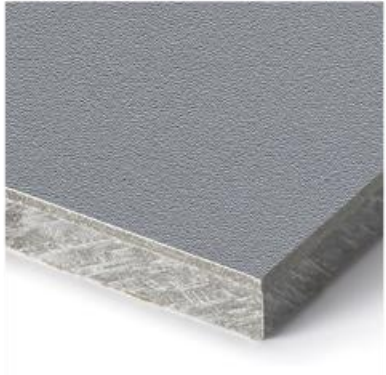
P55(Blinking Blue)



P65(Blinking Black)



Matteshell



Texture: Matte

Customized Color: Upon Request

The Matteshell color series have a full and textured feel while eliminating light reflections. With matte grade texture, its various distinctively pigmented finishes can give the façade a modern and avant-garde expression without any color limitations.



A10(Porcelain White)



A60(Matte Grey)



A62(Matte Dim Grey)



A66(Matte Slate Ash)



Fabricshell



Texture: Fabric

Customized Color: Upon Request

The Fabricshell color series create another noble and fabric-like expression in coating finishes. It displays a strong scratch-resistance and UV-resistance throughout its life cycle. It also exhibits a high resistance to graffiti, stain and acid-base compounds and advantage of easy cleaning when contaminated.



F20(Grey Hill)



F35(Volcanic)



F40(Gold Desert)



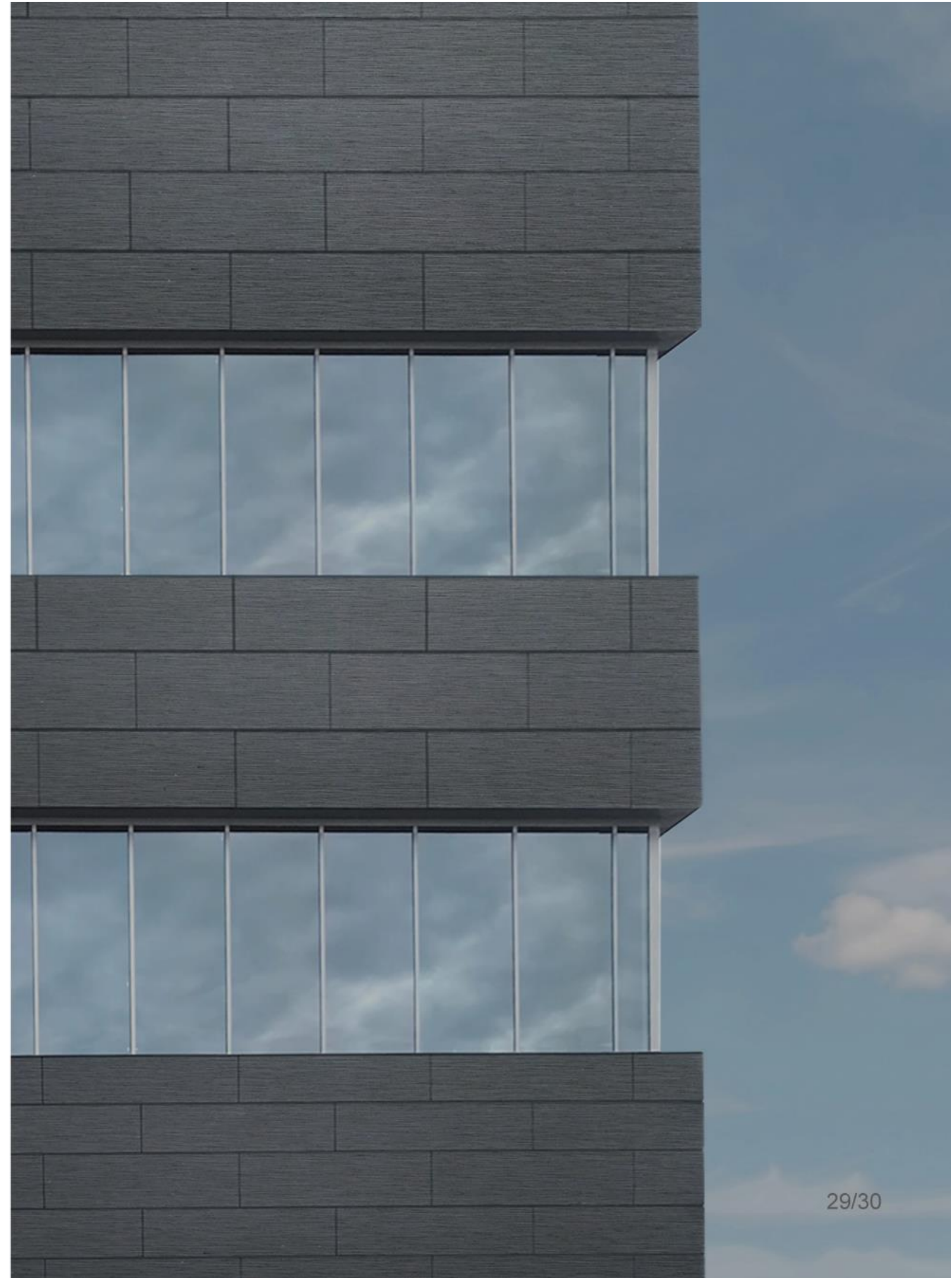
F50(Sun Valley)



F55(Salt Lake)



F59(Raw Sienna)



Graniteshell



Texture: Bush-Hammered, Flamed

Customized Color: Can be identical with any natural granite provided by customer.

The Graniteshell color series are GAJCladding unique pigmented finishes. With all the coating powders resourced from natural materials, its finishing displays an expression undistinguishable from natural granite. It also shows super strong UV-resistance throughout its life cycle, as well as a high resistance to graffiti, dust and acid-base compounds. It can be easily cleaned with an aqueous cleaner if contaminated.



G15 (Yellow Sesame)



G30 (White Sesame)



G40 (Grey Sesame)



G55 (Red Brick)



G75 (Coffee Rice)



G80 (Brown Coral)



Splendidshell



Texture: Matte

Customized Color: Can be identical with any natural granite provided by customer.

The Splendidshell color series, additional to its smoother surface than the Granitshell series, can add as much as any imagination of flaky and chipped color effect to the pigmented finishes. It displays a super strong UV-resistance throughout its life cycle. It also shows a high resistance to graffiti, dust and acid-base compounds and advantage of easy cleaning when contaminated.



S03 (Yellow Tremella)



S20 (White Impression)



S60 (Blue Floral)



S78 (Ash Floral)



S83 (Brown Quinoa)



S95 (Red Sorghum)



Wiryshell



Texture: Undulate

Customized Color: Upon Request

The Wiryshell color series is an undulating surface and at the same time a smooth, colourful film that gives the facade a textured, modern and avant-garde look.



W01(Pearl White)



W66(Dark Slate Ash)



Relievoshell



Texture: Erosion

Customized Color: Upon Request

The Relievoshell color series is a rough sculpted surface. The richness of the colours enhances the texture of architectural surfaces.



R68(Sculpture Dark Grey)



R70(Sculpture Blue)



GAJ CLADDING

FOCUSED FOR OVER 20 YEARS

Chongqing Guanjie Qizhong Building Materials Co., Ltd.
info@gajcladding.com