

GAJCladding Systems

GAJCladding Shield Catalog



GAJ CLADDING
FOCUSED FOR OVER 20 YEARS



GAJCladding Shield

The source of magnificence, the power of endurance, and the accent of individuality, GAJCladding, High-strength carrier board, Unique pretreatment process, and Scientific coating process to ensure exceptional coating adhesion. With its wide-range of texture and color coated façade panels, provides you with an endless inspiration, a realization of architect's original vision and a comprehensive and versatile solution for your creative individuality.



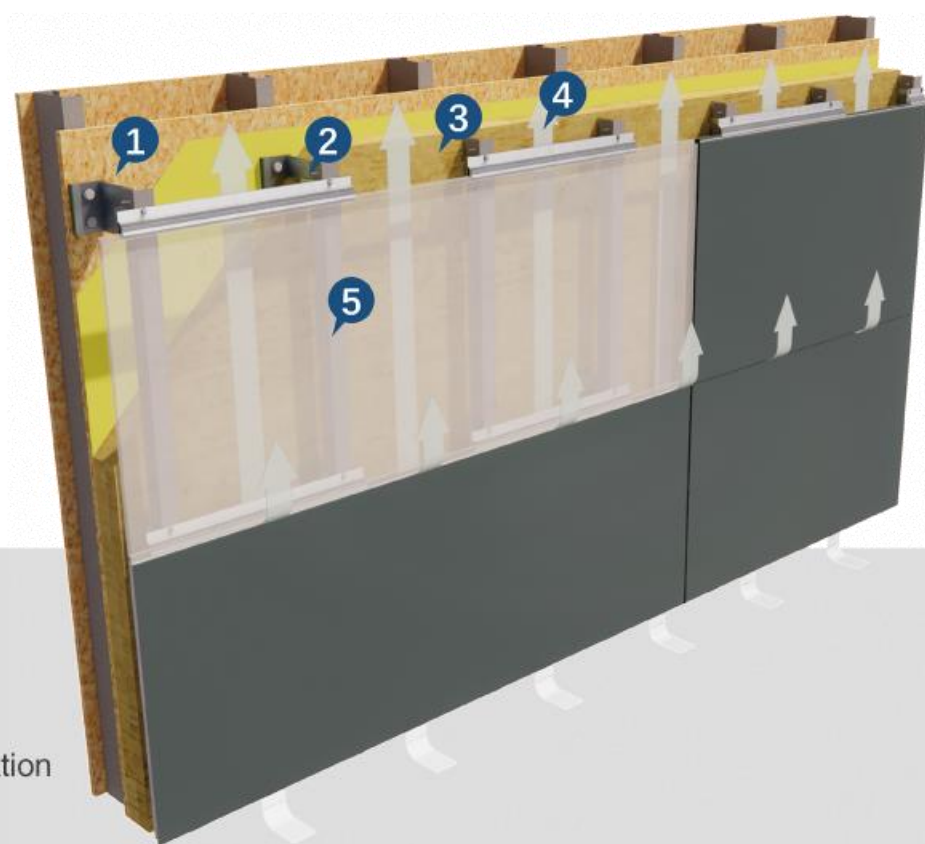
GAJCLADDING

Contents

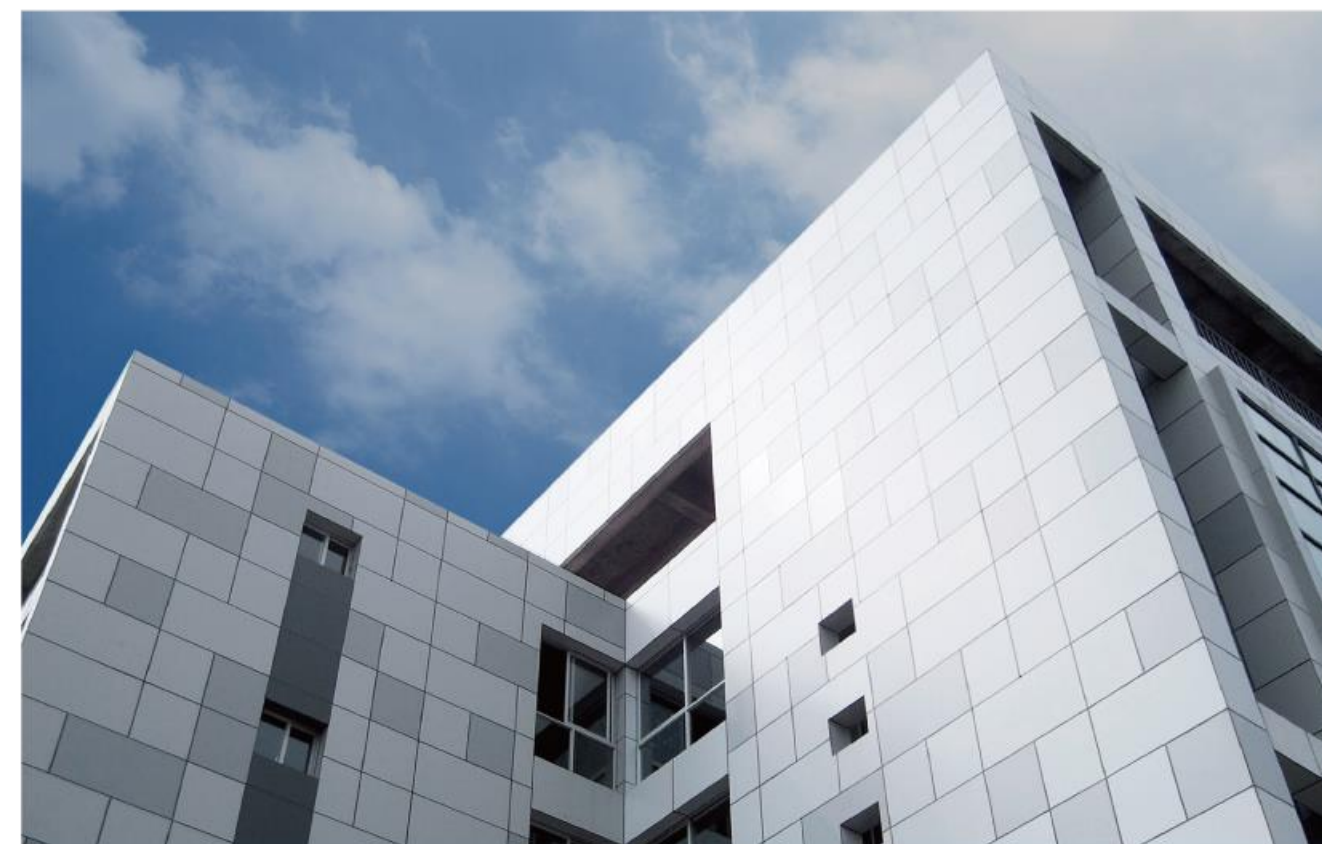
Back-ventilated Rainscreen System	5
Advantages	6
GAJCladding H-Shield	7
GH Support System	9
GAJCladding V-Shield	12
GV Support System	13
GAJCladding U-Shield	15
GU Support System	18
Shield Textures and Colors	19
Metalshell Series	21
Ceramicshell Series	23
Pearlshell Series	25
Matteshell Series	27
Fabricshell Series	29
Granitshell Series	31
Splendidshell Series	33
Wirshell Series	35
Relievoshell Series	36

Back-ventilated Rainscreen

The back-ventilated rainscreen system designed for rainscreen cladding applications with rear ventilation, they combined with each other to become the most reliable system. This cladding system not only effectively protects the building and its structure from the elements for a long time, but it also reduces humidity and the air circulation optimizes the efficiency of insulation. Therefore, problems such as mould and fungus do not occur.



1. Exterior Wall
2. Support Frame
3. Exterior Thermal Insulation
4. Ventilated Cavity
5. GAJCladding Shield Panel

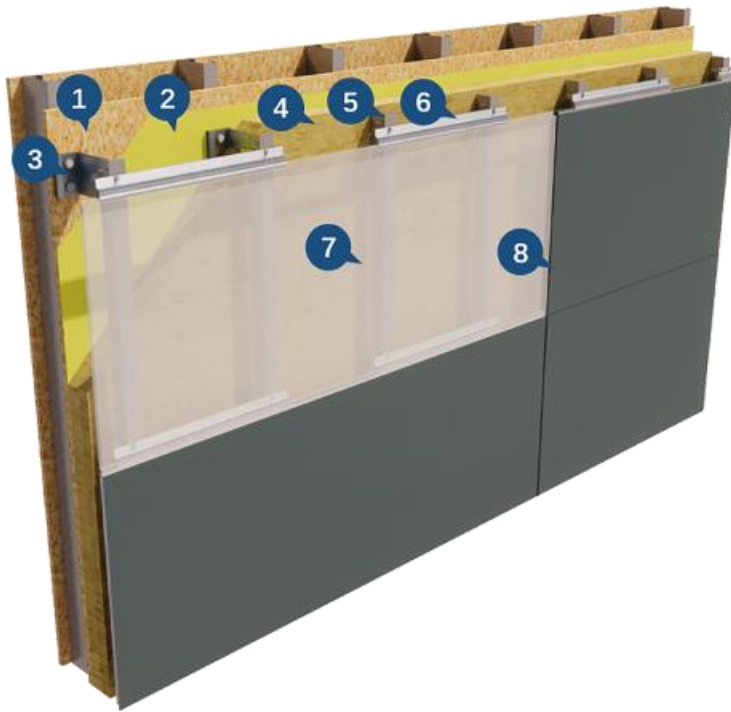


Advantages

- Almost no maintenance;
- Maximum thermal insulation effect, no thermal bridges, keeping the building structure at a constant temperature;
- Humidity / condensation is eliminated;
- Significant energy savings for HVAC;
- No cracks, sealants or painting problems.

GAJCladding H-Shield

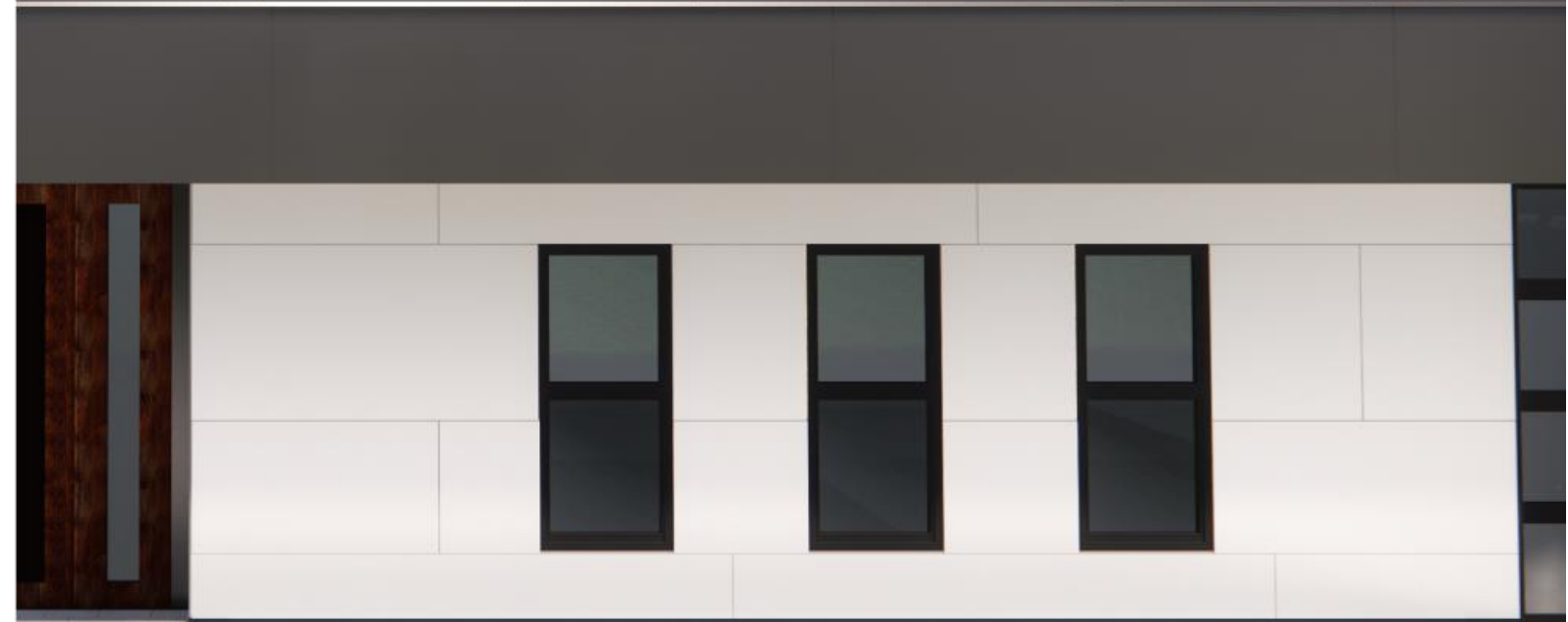
The H-Shield Rainscreen System is a concealed anchoring system with a special pre-fabricated panel seam configuration that can be used both to anchor panels and to conceal anchors. The standardized prefabricated panels in multiple sizes can be installed quickly on site and can be adapted to a variety of decorative system.



1. Exterior Wall
2. Vapor Barrier & Waterproof
3. Brackets
4. Exterior Thermal Insulation
5. Vertical Rail
6. H-Shield Clip
7. H-Shield Panel
8. Weatherproof Sealant & Joint Strip

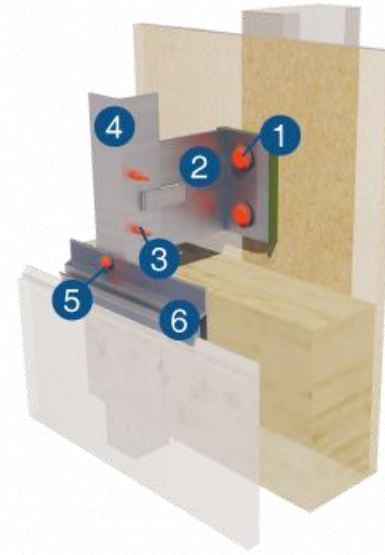
Overview Panel Sizes

400x2440x12mm	400x2440x15mm
600x2440x12mm	600x2440x15mm
800x2440x12mm	800x2440x15mm



GH Support System

The GH Support System consists of H-Clip and metal support frames. Specialised H-Shield Clip anchor our H-Shield panels to the metal support frame makes this system much simpler, more reliable and stable in its performance.



1. Substrate Fastener
2. Bracket
3. Rail to Bracket Fastener
4. L-profile Rail
5. Clip to Rail Fastener
6. Clip



Single Bracket with Thermal Isolators
Depth: 70mm; 100mm; 130mm; 160mm
Material: 6063 Aluminium Alloy; Galvanised steel with Electrophoresis



Double Bracket with Thermal Isolators
Depth: 70mm; 100mm; 130mm; 160mm
Material: 6063 Aluminium Alloy; Galvanised steel with Electrophoresis



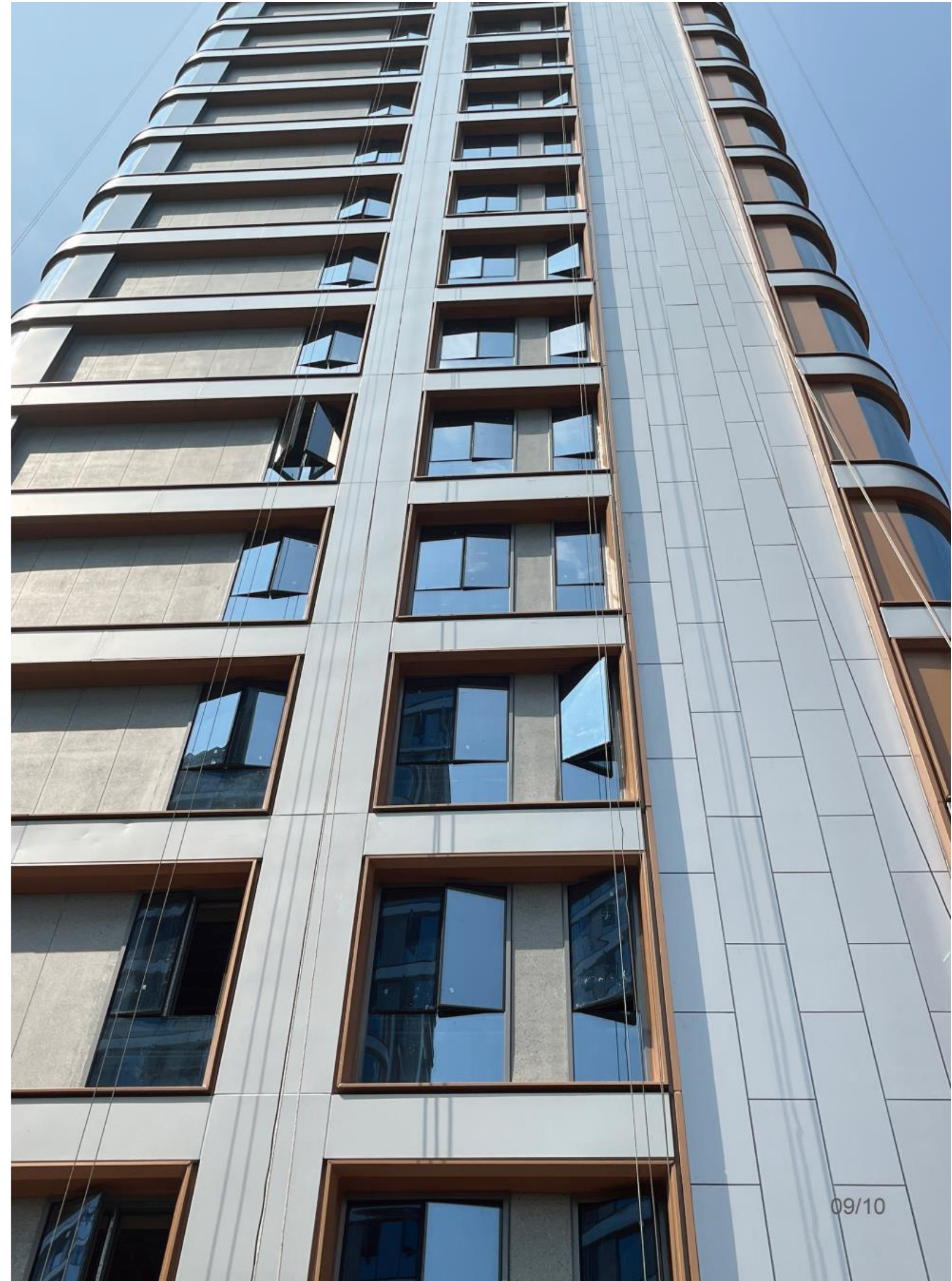
L-profile Rail
40-40mm
Material: 6063 Aluminium Alloy; Galvanised steel with Electrophoresis



Clip
Length: 508mm
Material: 6063 Aluminium Alloy



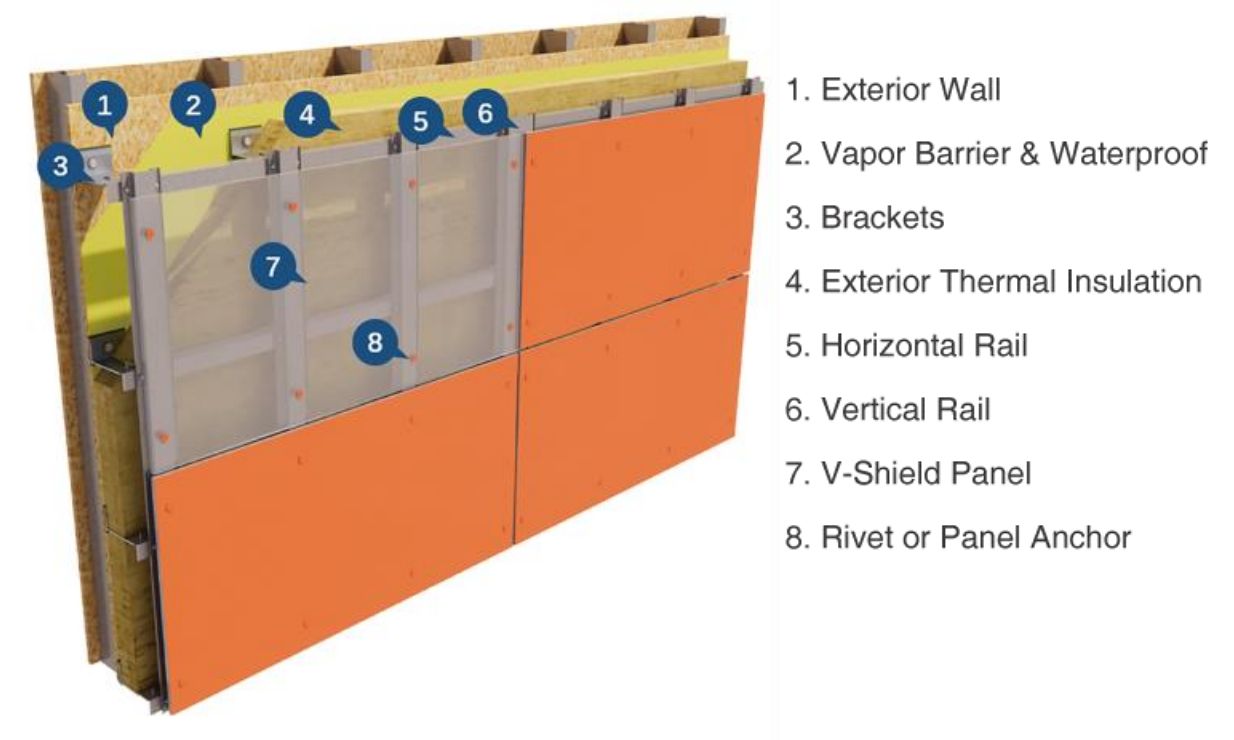
Starter Track
Length: 2400mm
Material: 6063 Aluminium Alloy





GAJCladding V-Shield

The V-Shield Rainscreen System is a visual anchoring system that transforms functional anchoring into a key design element of the building's facade. By making the anchors visible, it not only secures the cladding materials firmly but also contributes to the architectural beauty, offering a modern, industrial look that is both appealing and practical. This system is designed to ensure that each anchor not only supports the structural integrity but also enhances the visual impact, making it a perfect choice for designs that aim to make a statement through exposed mechanical details.



Overview Panel Sizes

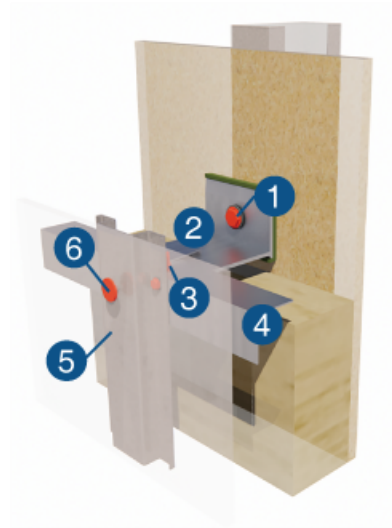
- 1220 x 2440 x 8mm
- 1220 x 2440 x 10mm
- 1220 x 2440 x 12mm

GV Support System

The GV visible support system consists of the color coated rivets or Panel Anchor and metal support frames, in an engineered arrangement specifically for V-Shield Panels. The color matched rivets to anchor our V-Shield panels onto marine-grade corrosion resistant aluminum metal support frames makes this system much simpler, more reliable and stable in its performance, and, the most important, easier for customer to cut on-site and install.

GV1 Support System

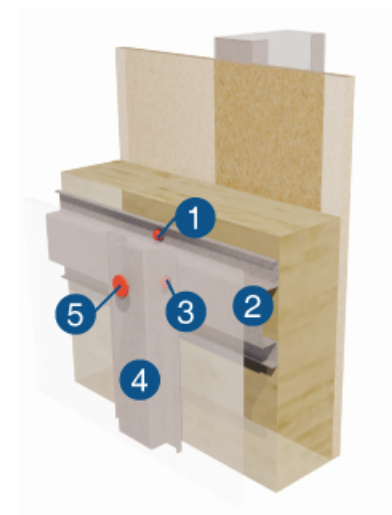
1. Substrate Fastener
2. Bracket
3. Rail to Bracket Fastener
4. L-profile Horizontal Rail
5. Hat-profile Vertical Rail
6. Rivet



GV2 Support System

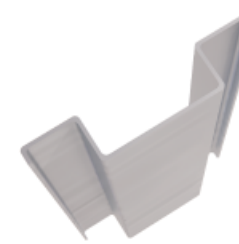
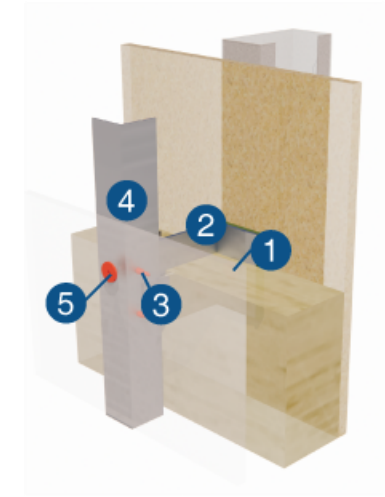
1. Substrate Fastener
2. Hat-profile Horizontal Rail
3. Hat-profile Vertical Rail to Horizontal Rail Fastener
4. Hat-profile Vertical Rail
5. Rivet

This support system should be insulated with rigid insulation such as foam plastic or high-density rock wool (comfortboard 110) .



GV3 Support System

1. Substrate Fastener
2. Bracket
3. Rail to Bracket Fastener
4. L-profile or T-profile Vertical Rail
5. Rivet



Hat-profile Rail
20-50-20mm; 20-100-20mm
Material: 6063 Aluminium Alloy;
Galvanised steel with
Electrophoresis



T-profile Rail
40-100mm
Material: 6063 Aluminium Alloy

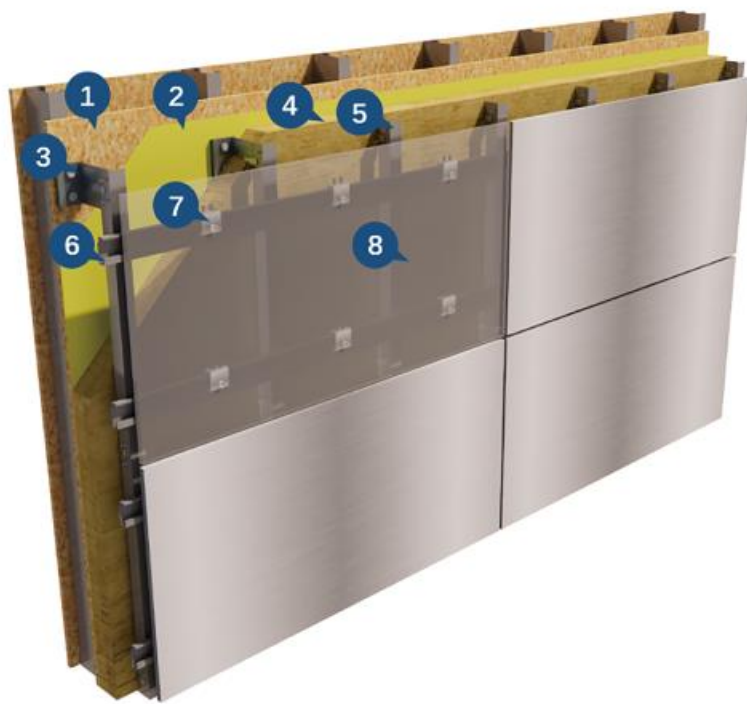


Coated Rivet
Diameter: 5mm
Material: Aluminium
Stainless 316

Bracket and L-profile Rail are the same as the GH support system.

GAJCladding U-Shield

The U-Shield Rainscreen System is a sophisticated approach to mounting fiber cement panels, designed to employ the strength and stability of concealed, undercut anchors. Each panel is meticulously pre-drilled at the back to accommodate a specialized hanger clip and expanding bolt anchor, ensuring a secure and enduring attachment. The system is ingeniously paired with a clip cladding support system that bolsters the thermal performance of insulated exterior walls. By separating steel girts from the backup wall, it preserves the complete insulation value and eliminates thermal bridging typically associated with traditional steel girt systems.



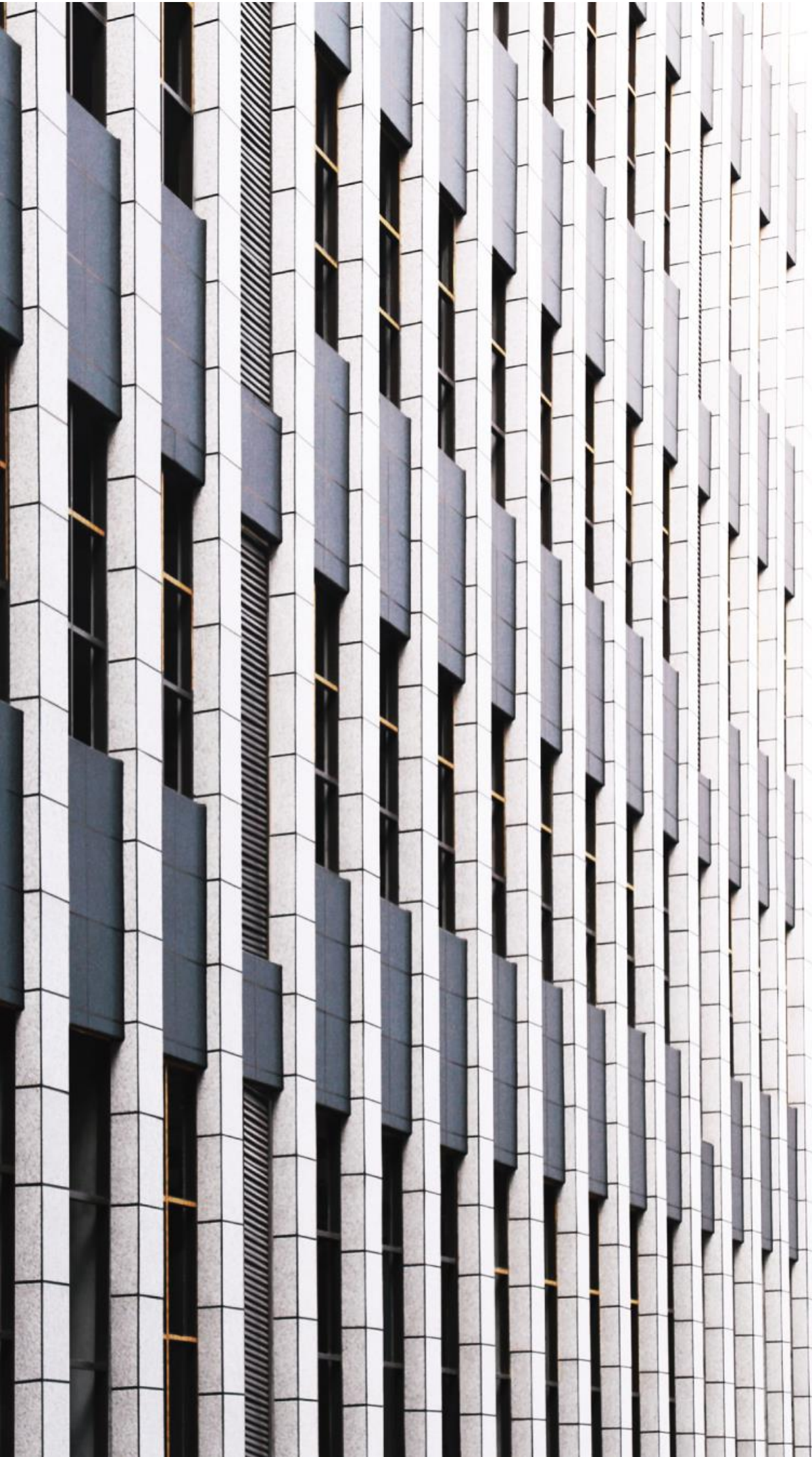
1. Exterior Wall
2. Vapor Barrier & Waterproof
3. Brackets
4. Exterior Thermal Insulation
5. Vertical Rail
6. C-Profile Horizontal Rail
7. C-Profile Clip & Undercut
8. U-Shield Panel

Overview Panel Sizes

1220 x 2440 x 12mm

1220 x 2440 x 15mm

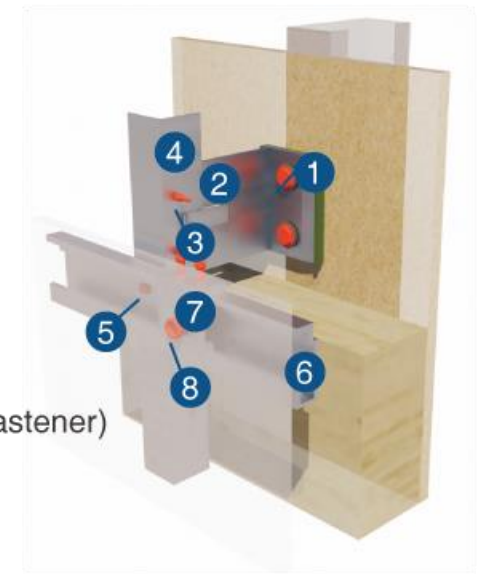




GU Support System

The GU concealed support system consists of the undercuts, C-profile clips sets, and metal support frames in an engineered arrangement specifically for U-Shield panels. It serves as a horizontal anchoring system on the structural extrusion designed specifically for U-shield to address the system wind load safety, fire safety and thermal performance.

1. Substrate Fastener
2. Bracket
3. Vertical Rail to Bracket Fastener
4. L-profile Vertical Rail
5. C-profile Rail to Vertical Rail Fastener
6. C-profile Rail
7. C-profile Clip Set(with adjuster screw & locking fastener)
8. Undercut



C-profile Rail
Material: 6063 Aluminium Alloy;



C-profile Clip
with Adjuster Screw
Length: 50mm
Material: 6063 Aluminium Alloy;



Undercut
M6x5mm; M6x7mm; M6x9mm

Bracket and L-profile Rail are the same as the GH support system.

Shield Texture and Colors - the Endless Variations

As natural as granite or as shining as metals, GAJCladding's distinctive powder-coated fiber cement panels have been a leading brand for decades in the cladding industry. Its unique natural look and timeless beauty provide an exciting and noble expression to every building. The special coating also shows strong scratch resistance and offers lasting defense against graffiti. GAJCladding has taken all that is great about fiber cement and engineered it into the magnificent rain screen and weather barrier cladding systems that stand out in the construction world.



Metalshell



Texture: Satin

Customized Color: Upon Request

The Metalshell color series are GAJCladding unique pigmented finishes. The selected metallic colors are coated with the super durable powders to achieve required performance as well as real metal expression, such as steel, copper, aluminum, silver or gold. These color series are usually selected by architects for high value buildings.



M10 (Silver Flash)



M15 (Alum Flash)



M30 (Grey Flash)



M40 (Iron Flash)



M50 (Gold Flash)



M70 (Coffee Flash)



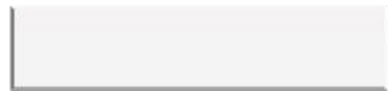
Ceramicshell



Texture: Satin

Customized Color: Upon Request

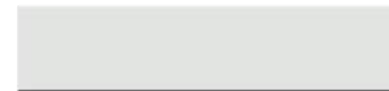
The Ceramicshell color series use high performance fluoropolymer powders to achieve the durability of colors and gloss. With satin grade texture, its various distinctively pigmented finishes can give the façade a modern and avant-garde expression without any color limitations.



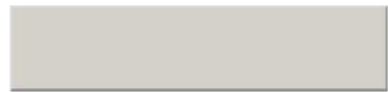
110 (White Ceramic)



115 (Porcelain White)



130 (Pearl White)



150 (Ivory White)



201 (White Straw)



204 (Dry Straw)



205 (Bronze Ash)



210 (Loess Brown)



305 (Orange Ceramic)



505 (Loess Brown)



515 (Brown Clay)



535 (Brick Red)



555 (Chocolate Brown)



615 (Grey Ash)



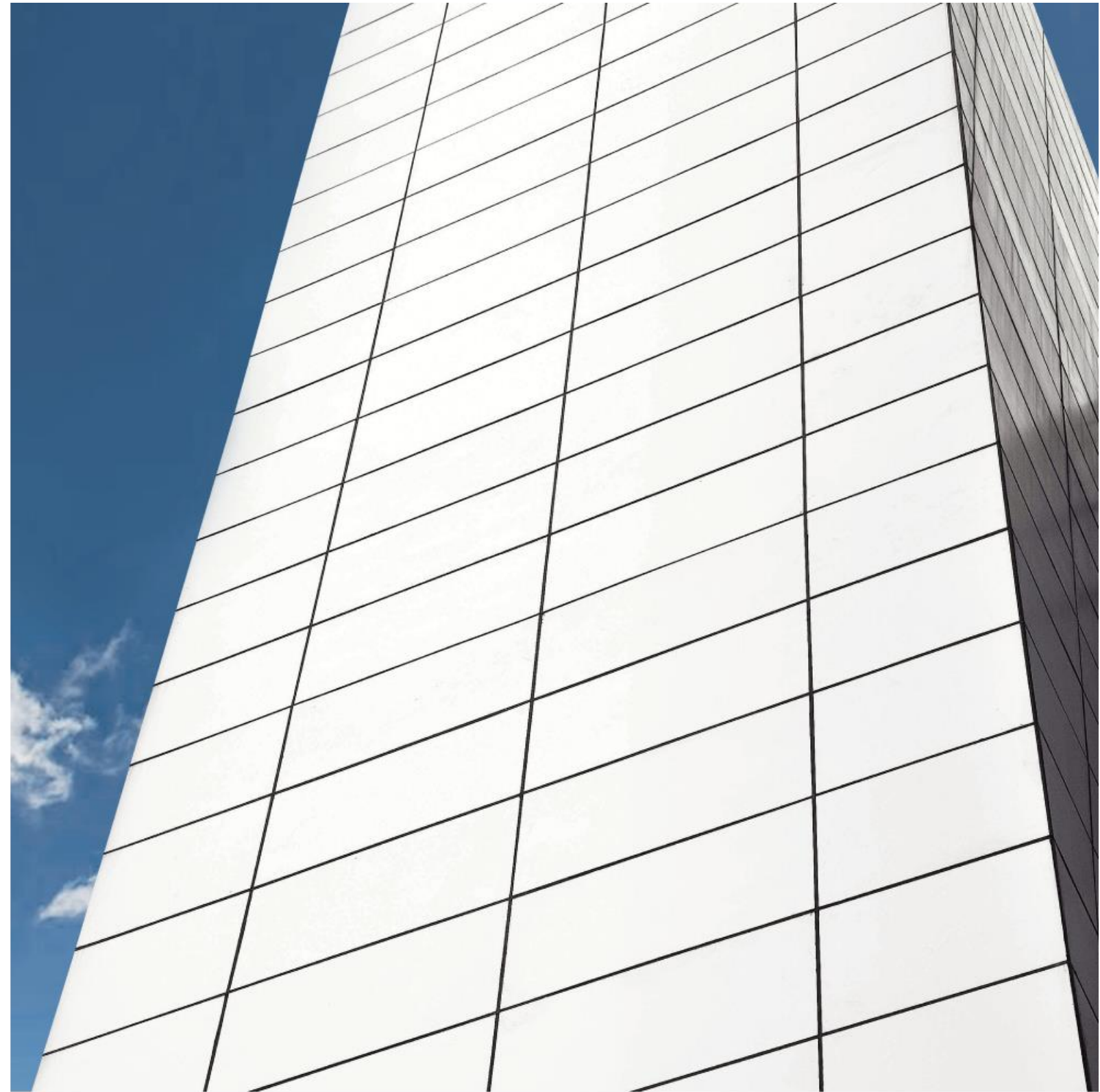
640 (Dim Grey Ash)



650 (Iron Ash)



660 (Dark Slate Ash)



Pearlshell



Texture: Satin

Customized Color: N/A

The Pearlshell color series are GAJCladding distinctive pigmented finishes by adding pearl powder to achieve façade unexpected color illusive or shimmering effect.



P10(Chameleon Apricot)



P20(Chameleon Cyan)



P30(Chameleon Blue)



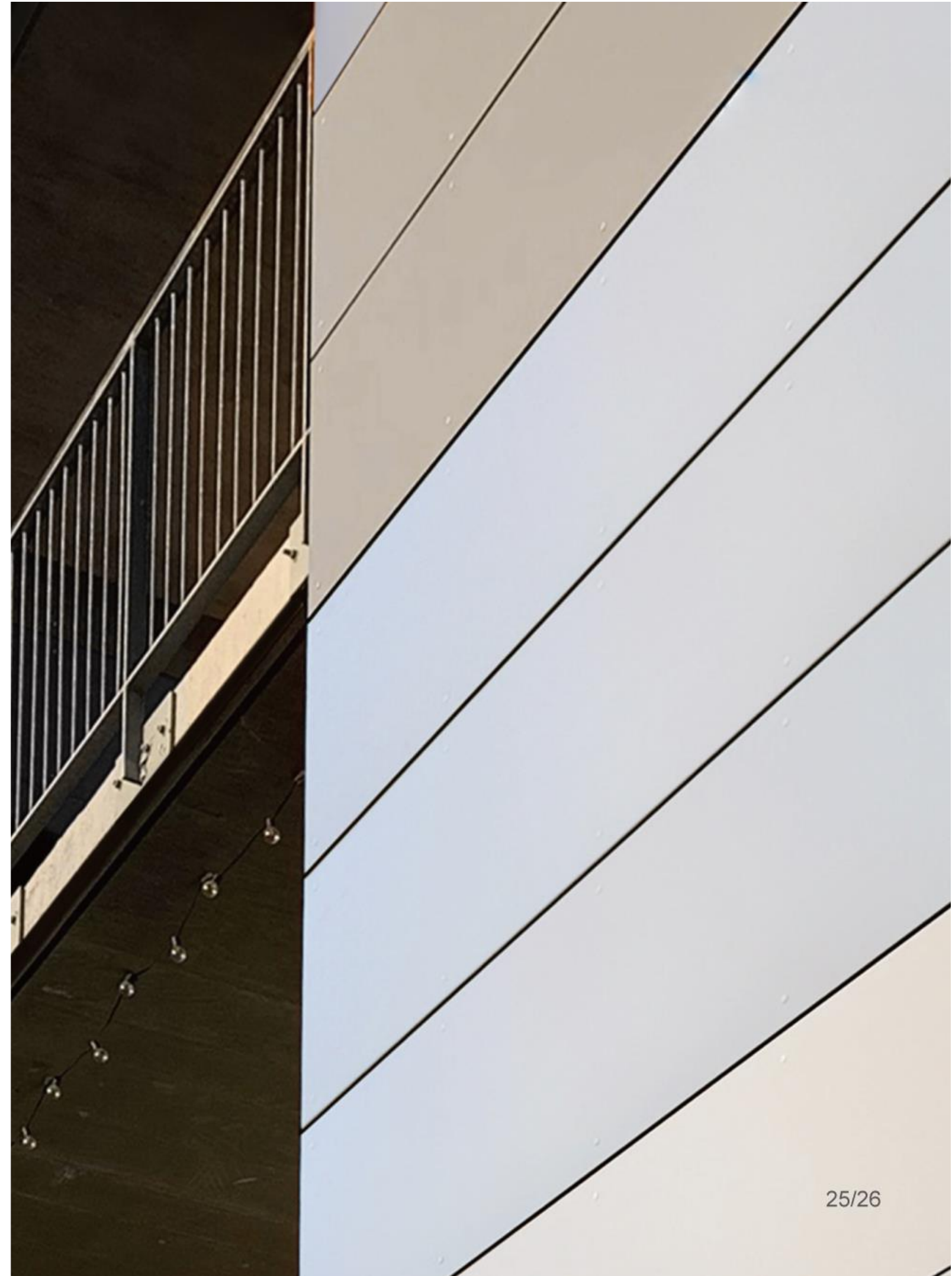
P40(Chameleon Magenta)



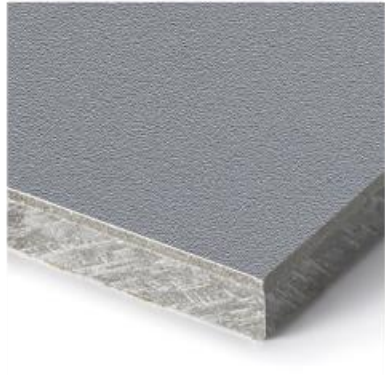
P55(Blinking Blue)



P65(Blinking Black)



Matteshell



Texture: Matte

Customized Color: Upon Request

The Matteshell color series have a full and textured feel while eliminating light reflections. With matte grade texture, its various distinctively pigmented finishes can give the façade a modern and avant-garde expression without any color limitations.



A10(Porcelain White)



A60(Matte Grey)



A62(Matte Dim Grey)



A66(Matte Slate Ash)



Fabricshell



Texture: Fabric

Customized Color: Upon Request

The Fabricshell color series create another noble and fabric-like expression in coating finishes. It displays a strong scratch-resistance and UV-resistance throughout its life cycle. It also exhibits a high resistance to graffiti, stain and acid-base compounds and advantage of easy cleaning when contaminated.



F20(Grey Hill)



F35(Volcanic)



F40(Gold Desert)



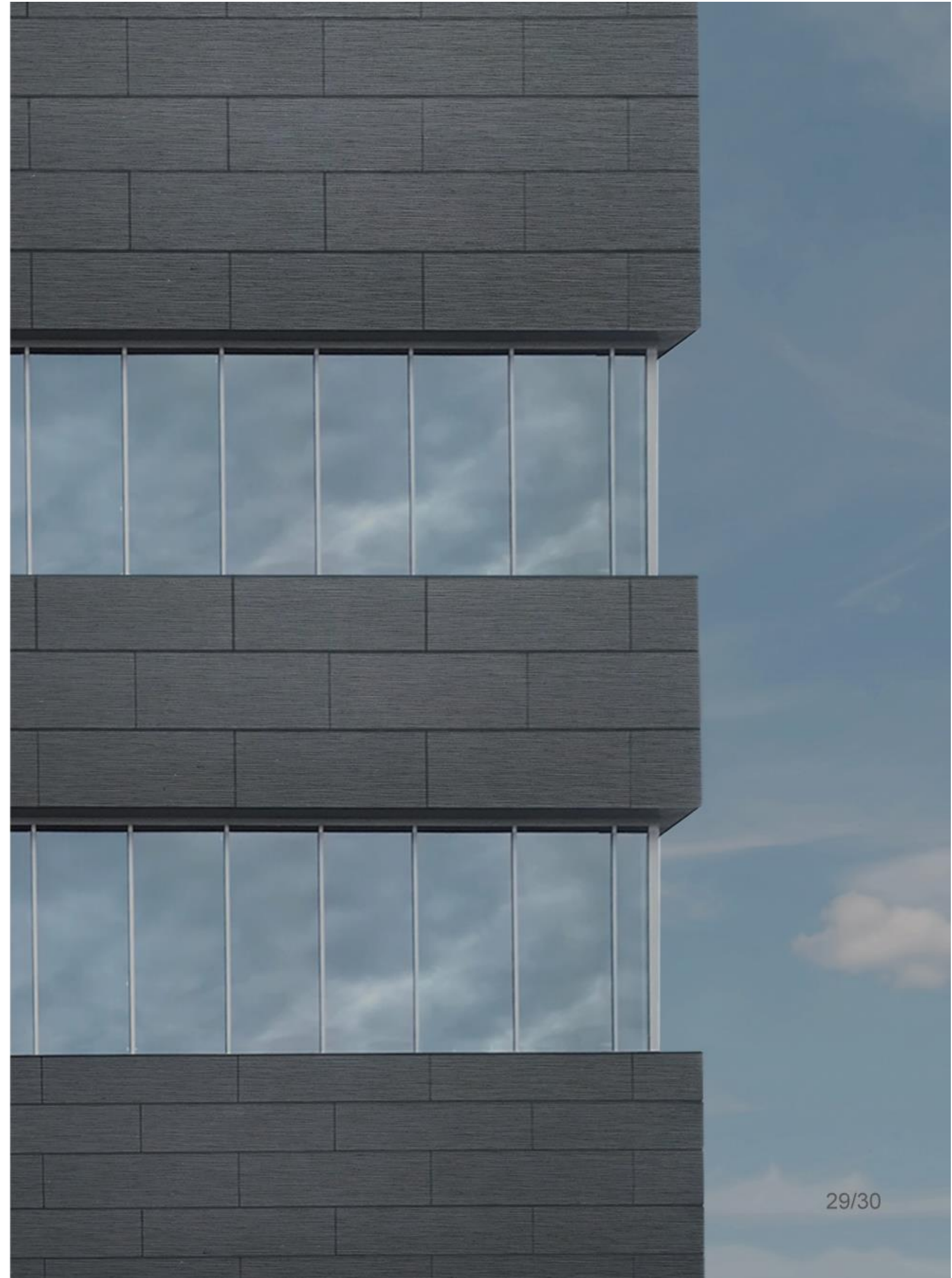
F50(Sun Valley)



F55(Salt Lake)



F59(Raw Sienna)



Graniteshell



Texture: Bush-Hammered, Flamed

Customized Color: Can be identical with any natural granite provided by customer.

The Graniteshell color series are GAJCladding unique pigmented finishes. With all the coating powders resourced from natural materials, its finishing displays an expression undistinguishable from natural granite. It also shows super strong UV-resistance throughout its life cycle, as well as a high resistance to graffiti, dust and acid-base compounds. It can be easily cleaned with an aqueous cleaner if contaminated.



G15 (Yellow Sesame)



G30 (White Sesame)



G40 (Grey Sesame)



G55 (Red Brick)



G75 (Coffee Rice)



G80 (Brown Coral)



Splendidshell



Texture: Matte

Customized Color: Can be identical with any natural granite provided by customer.

The Splendidshell color series, additional to its smoother surface than the Graniteshell series, can add as much as any imagination of flaky and chipped color effect to the pigmented finishes. It displays a super strong UV-resistance throughout its life cycle. It also shows a high resistance to graffiti, dust and acid-base compounds and advantage of easy cleaning when contaminated.



S03 (Yellow Tremella)



S20 (White Impression)



S60 (Blue Floral)



S78 (Ash Floral)



S83 (Brown Quinoa)



S95 (Red Sorghum)



Wiryshell



Texture: Undulate

Customized Color: Upon Request

The Wiryshell color series is an undulating surface and at the same time a smooth, colourful film that gives the facade a textured, modern and avant-garde look.



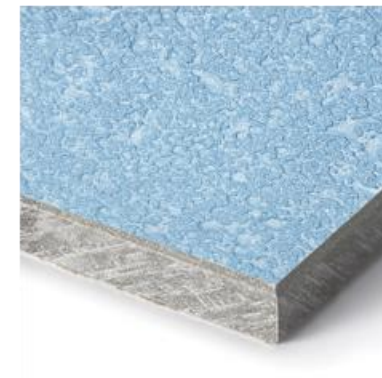
W01(Pearl White)



W66(Dark Slate Ash)



Relievoshell



Texture: Erosion

Customized Color: Upon Request

The Relievoshell color series is a rough sculpted surface. The richness of the colours enhances the texture of architectural surfaces.



R68(Sculpture Dark Grey)



R70(Sculpture Blue)



GAJ CLADDING

FOCUSED FOR OVER 20 YEARS

Chongqing Guanjie Qizhong Building Materials Co., Ltd.
info@gajcladding.com