

GAJCLADDING

CladForm

Form Driven Facades, Made Practical



CladForm at a Glance

CladForm is a form driven pre-coated fiber cement facade system designed for expressive surfaces and efficient installation.

--- Form Driven Design

Integrated grooves and structured surface patterns transform the facade into an architectural element with depth, rhythm, and visual identity.

--- Efficient Installation

Prefabricated panels and a coordinated support system reduce on site cutting and alignment work, enabling faster, cleaner, and more predictable installation.

--- Low Maintenance Durability

Factory applied coatings and dense fiber cement substrates deliver excellent weather resistance, color stability, and long term performance with minimal maintenance.





GAJCLADDING

Contents

CladForm at a Glance <i>A form driven facade system designed for practical installation</i>	1
About GAJCladding <i>Manufacturer background and pre coated expertise</i>	5
Why Pre-coated Fiber Cement Board <i>Material structure and performance advantages for architectural cladding</i>	7
CladForm System Overview <i>Panels, and support systems working together</i>	13
Surface Expressions <i>Colors, textures, and form driven facade patterns</i>	19

24

Years of Experience

20,000

Production Base(m²)

8,000,000

Annual Production(m²)

76

Patents

FOCUSED ON BUILDING ENVELOPE SYSTEMS FOR OVER 20 YEARS

Established in 2002, GAJCladding specializes in the research, design, manufacturing, and delivery of energy efficient and decorative building envelope systems. With over two decades of industry experience, we focus on high performance fiber cement cladding and integrated support systems for ventilated facade applications.

Our fiber cement cladding systems offer a wide range of surface textures and color solutions, combining durability, aesthetics, and long term performance. Through advanced pre coating processes and systematic product development, we provide reliable solutions that meet both architectural design intent and practical construction requirements.

Professionalism, dedication, and sincere service define our approach. We work closely with designers, contractors, and material suppliers to address technical challenges and deliver complete, dependable system solutions rather than isolated products.

Our vision is to become a trusted global partner in building envelope system solutions by continuously raising product standards, advancing technical capabilities, and contributing to the sustainable development of the industry.

ABOUT US





Why Pre-coated Fiber Cement Panel

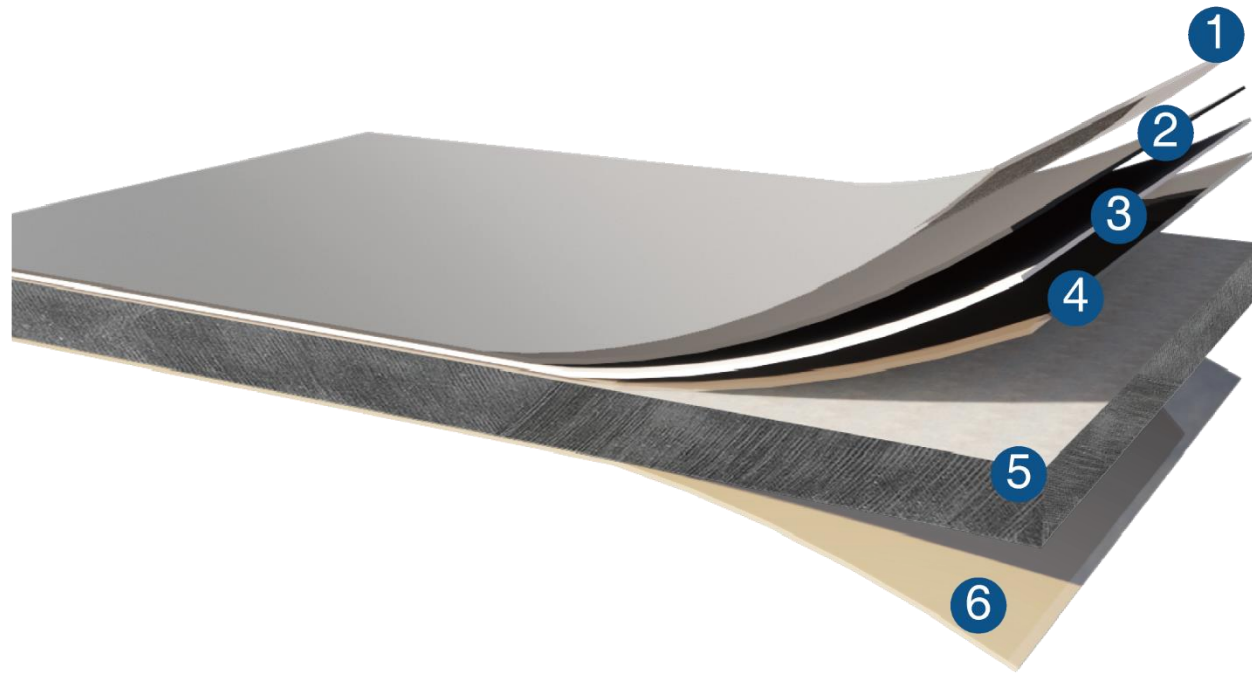
Pre-coated fiber cement panels combine structural durability with controlled surface performance, offering a reliable solution for modern building envelopes. By applying coatings under factory controlled conditions, surface quality, color consistency, and long-term adhesion can be precisely managed.

At GAJCladding, high-density fiber cement boards are used as the carrier, followed by a proprietary pretreatment process and a scientifically developed coating system. This integrated process significantly enhances coating adhesion, weather resistance, and color stability, ensuring consistent performance throughout the product's service life.

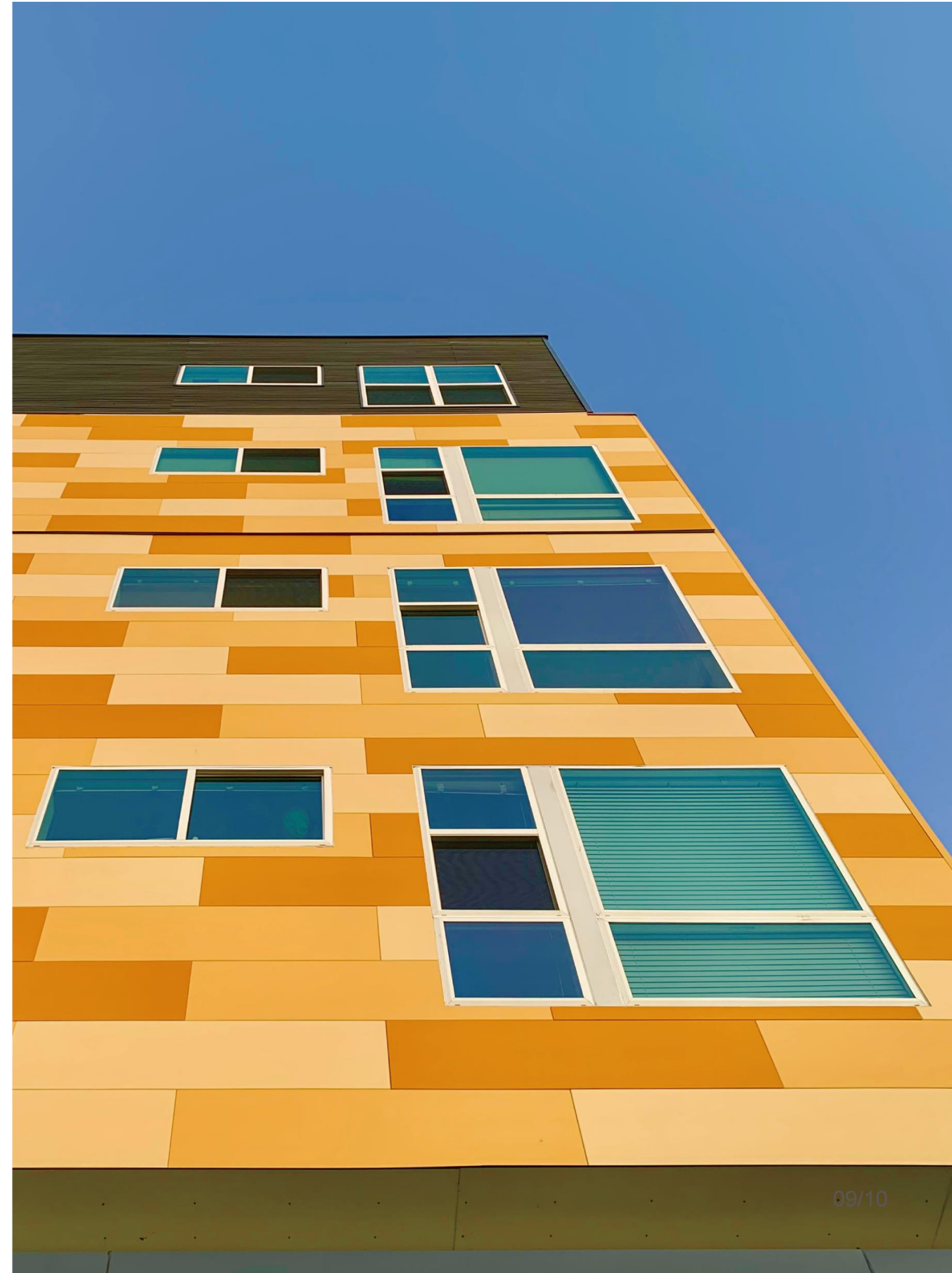
With a wide range of textures and color finishes, pre-coated fiber cement enables architects to translate design intent into durable, buildable façade solutions, while reducing on-site work and long-term maintenance requirements.

Not Just the Panels + Coatings

GAJCladding pre-coated fiber cement panels are designed as an integrated layered system. Each layer plays a specific role to ensure long-term performance, adhesion, durability, and aesthetic consistency. Unlike simple panel-and-coating products, our system delivers controlled surface performance under diverse environmental conditions.



- 1. Protective Layer**
Enhances the coating's resistance to UV radiation and surface staining
- 2. Top-coat Layer**
3 super UV-resistant and decorative coats for long-lasting aesthetics
- 3. Base-coat Layer**
Enhance the Aesthetics of the Coating
- 4. Pre-treatment Layer**
Enhances the visual depth and texture of the coating
- 5. Carrier Board**
High-density fiber cement board providing structural strength
- 6. Waterproof Layer**
Seals the sides and back of the panel to prevent moisture ingress



Proven Performance

Dirt Resistance, Frost and UV Resistance

GAJCladding pre-coated panels maintain their appearance even under harsh climates:

- **Dirt Resistance:** Minimizes surface staining and simplifies maintenance.
- **Frost Resistance:** Panels withstand repeated freeze-thaw cycles without delamination.
- **UV Resistance:** Accelerated UV tests and real-world projects confirm long-term color stability.

Across multiple projects in cold, humid, and high-UV environments, GAJCladding panels consistently retain their original color and surface quality.

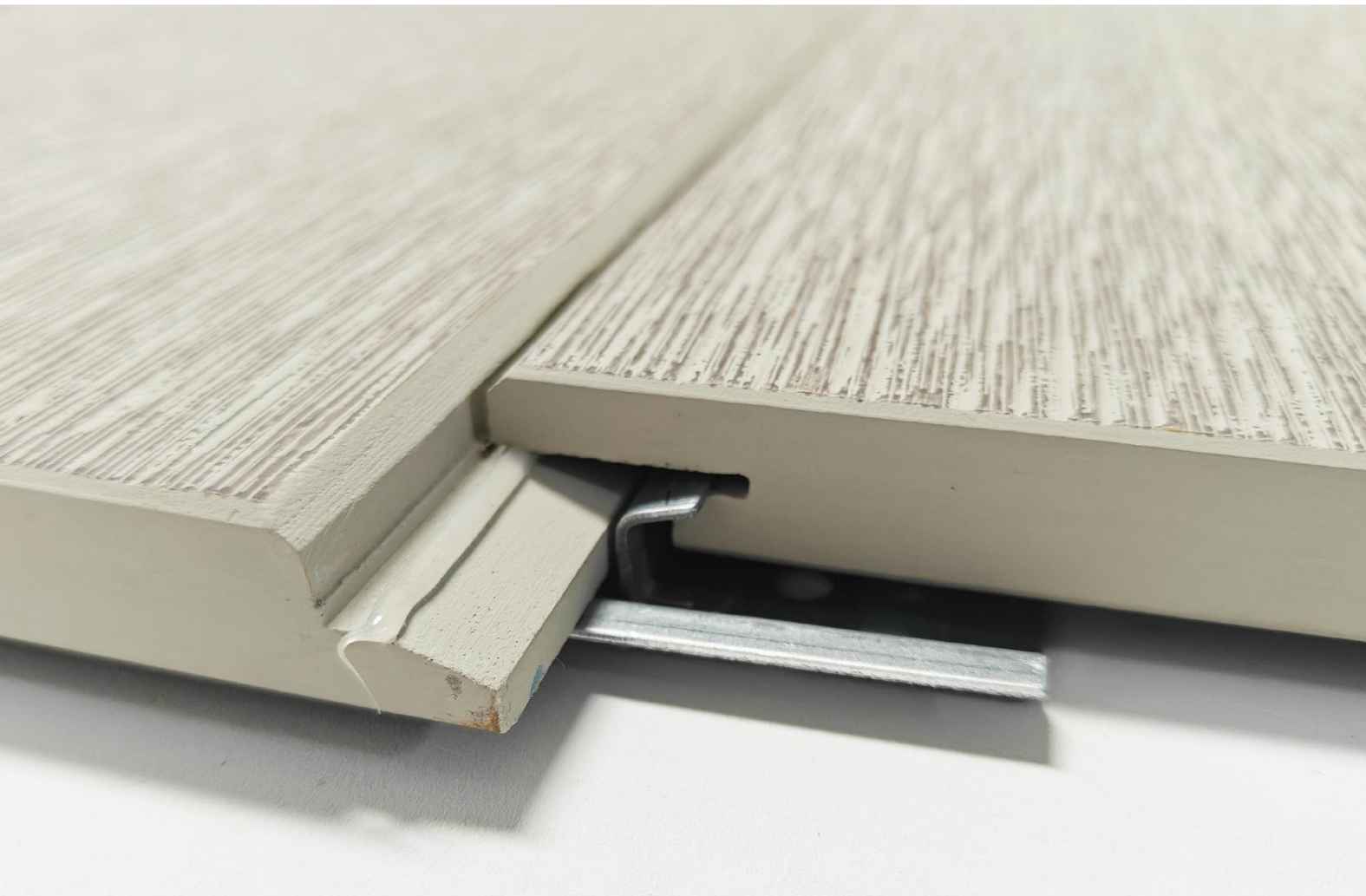
Completed in 2006
Photographed in 2023



CladForm System Overview

CladForm is a ventilated façade system designed to adapt to different wall conditions while delivering consistent aesthetic quality and long-term performance. Through an integrated installation logic, CladForm combines surface expression with reliable building envelope functionality.

- **Ventilated Facade Principle**
A controlled cavity behind the panels supports moisture regulation and façade durability.
- **Flexible Installation Logic**
2 installation approaches accommodate both flat substrates and complex wall conditions.
- **Integrated System Design**
Panels, fixings, and support components are designed to work as one system.

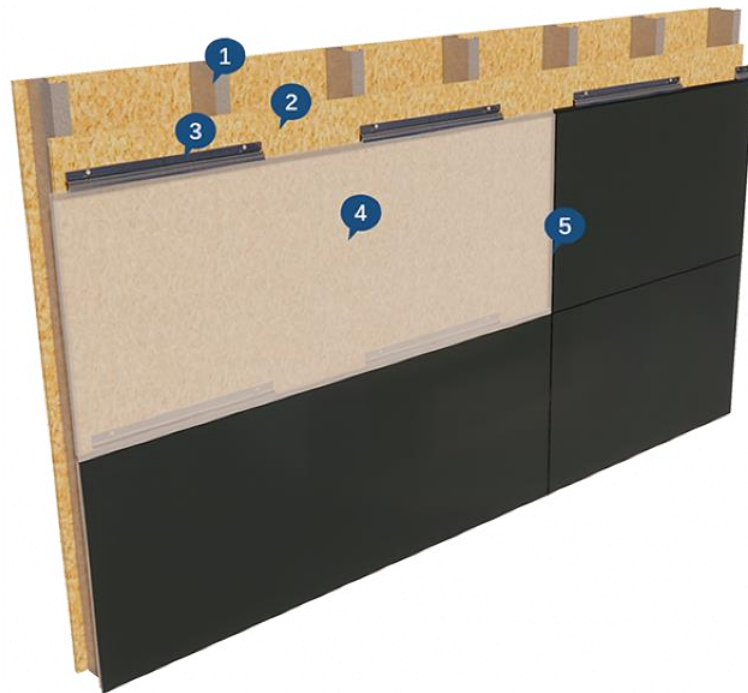


Installation Options

CladForm offers 2 installation approaches to suit different substrate conditions and performance requirements.

• Clip Installation System

Designed for flat and structurally sound substrates, this system allows panels to be installed directly using concealed clips. The result is fast installation, clean detailing, and minimal system build-up.



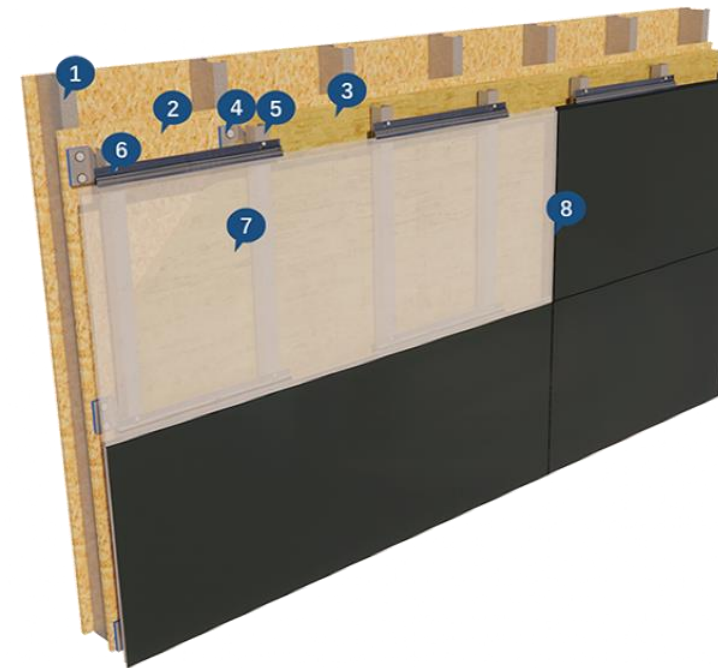
1. Exterior Wall
2. Vapor Barrier & Waterproof
3. Clip
4. Panel
5. Weatherproof Sealant & Joint Strip



Suitable for: Flat wall substrates
 No external insulation
 Projects prioritizing installation efficiency

• Support System Installation

When wall flatness cannot be guaranteed or when external insulation is required, CladForm can be installed on an adjustable support system. This approach compensates for substrate tolerances, creates a ventilated cavity, and ensures precise panel alignment.



1. Exterior Wall
2. Vapor Barrier & Waterproof
3. Brackets
4. Exterior Thermal Insulation
5. Vertical Rail
6. Clip
7. Panel
8. Weatherproof Sealant & Joint Strip



Suitable for: Uneven substrates
 Facades with external insulation
 Higher building envelope performance requirements

Choosing the Right System

Both installation methods follow the same design logic and deliver consistent façade appearance. The selection depends on wall conditions rather than panel design.

System Advantages

- **Ventilated Cavity and Micro Ventilation**

The space created behind the panels enables micro ventilation, allowing moisture to dissipate naturally. This helps stabilize the building envelope, reduce moisture-related stress, and support long-term facade performance.

- **Moisture Management**

By separating the cladding from the substrate, the system minimizes moisture accumulation and reduces the risk of condensation, contributing to facade durability and coating longevity.

- **Tolerance Compensation**

The adjustable support system compensates for construction tolerances, ensuring consistent panel alignment even on uneven walls.

- **Clean Aesthetics**

Concealed fixing solutions maintain clean facade lines and support refined architectural detailing.

- **Installation Efficiency**

A logical installation sequence and prefabricated components help reduce on-site labor and improve construction efficiency.

Together, these system advantages ensure that CladForm delivers not only visual expression, but also reliable long-term building envelope performance across diverse climates and construction conditions.



Surface Expressions

GAJCladding's pre-coated fiber cement panels are designed as a medium for architectural expression rather than a mere facade material. Through refined surface treatments, carefully calibrated textures, and a wide spectrum of colors, the panels translate form, rhythm, and proportion into a distinctive facade language.

From subtle mineral finishes to bold geometric compositions, GAJCladding enables architects to shape surfaces with depth, contrast, and visual continuity. The panels respond naturally to light and shadow, allowing facades to evolve throughout the day while maintaining a controlled and intentional aesthetic.

Beyond appearance, the advanced coating system ensures that the visual character of the facade remains stable over time. Colors retain their clarity, surfaces resist staining and abrasion, and architectural details stay sharp, allowing the original design intent to be preserved long after installation.



Metalshell



Texture: Smooth

Customized Color: RAL Color Chart

Panel Size: 400 / 600 / 800 × 2440 × 12 mm
400 / 600 / 800 × 2440 × 15 mm

The Metalshell series presents a smooth surface with a refined metallic texture and controlled light reflection. Its subtle shimmer adds depth and movement to the facade under varying light conditions. Based on the RAL color chart, customized metallic tones can be specified to meet diverse architectural design requirements. Designed for contemporary architecture, it delivers a modern material expression with a distinctive metallic character.



M10



M15



M30



M40



M50



M61



M63



M65



M67



M70



M80



Ceramicshell



Texture: Smooth

Customized Color: RAL Color Chart

Panel Size: 400 / 600 / 800 × 2440 × 12 mm

400 / 600 / 800 × 2440 × 15 mm

The Ceramicshell series features a smooth, uniform surface with precise color expression. Based on the RAL color chart, it supports customized color selection to meet specific architectural design requirements. Its clean surface and stable color performance make it an ideal choice for facades that emphasize clarity, minimalism, and strong visual identity.



110



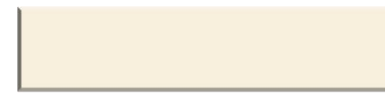
115



130



150



201



204



205



210



305



505



515



535



555



615



640



650



660



Pearlshell



Texture: Smooth

Customized Color: N/A

Panel Size: 400 / 600 / 800 × 2440 × 12 mm

400 / 600 / 800 × 2440 × 15 mm

The Pearlshell series features distinctive pigmented finishes enhanced with pearl powder to create a subtle iridescent and shimmering effect. Its surface reacts gently to changing light, producing depth and soft color variation across the facade. Available in a curated selection of standard tones, Pearlshell offers a unique visual character that cannot be replicated through conventional color customization.



P10



P20



P30



P40



P55



P65



Colorshell



Texture: Smooth

Customized Color: RAL Color Chart

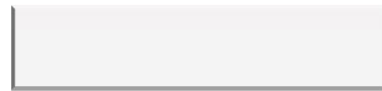
Panel Size: 400 / 600 / 800 × 2440 × 12 mm

400 / 600 / 800 × 3050 × 12 mm

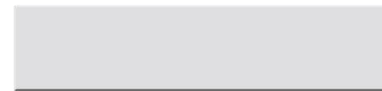
400 / 600 / 800 × 2440 × 15 mm

400 / 600 / 800 × 3050 × 15 mm

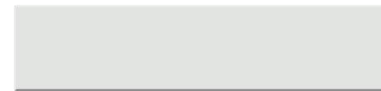
The Colorshell series features a smooth, uniform surface with precise color expression. Based on the RAL color chart, it supports customized color selection to meet specific architectural design requirements. Its clean surface and stable color performance make it an ideal choice for facades that emphasize clarity, minimalism, and strong visual identity.



C110



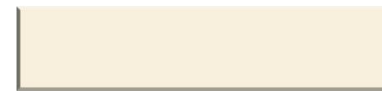
C115



C130



C150



C201



C204



C205



C210



C305



C505



C515



C535



C555



C615



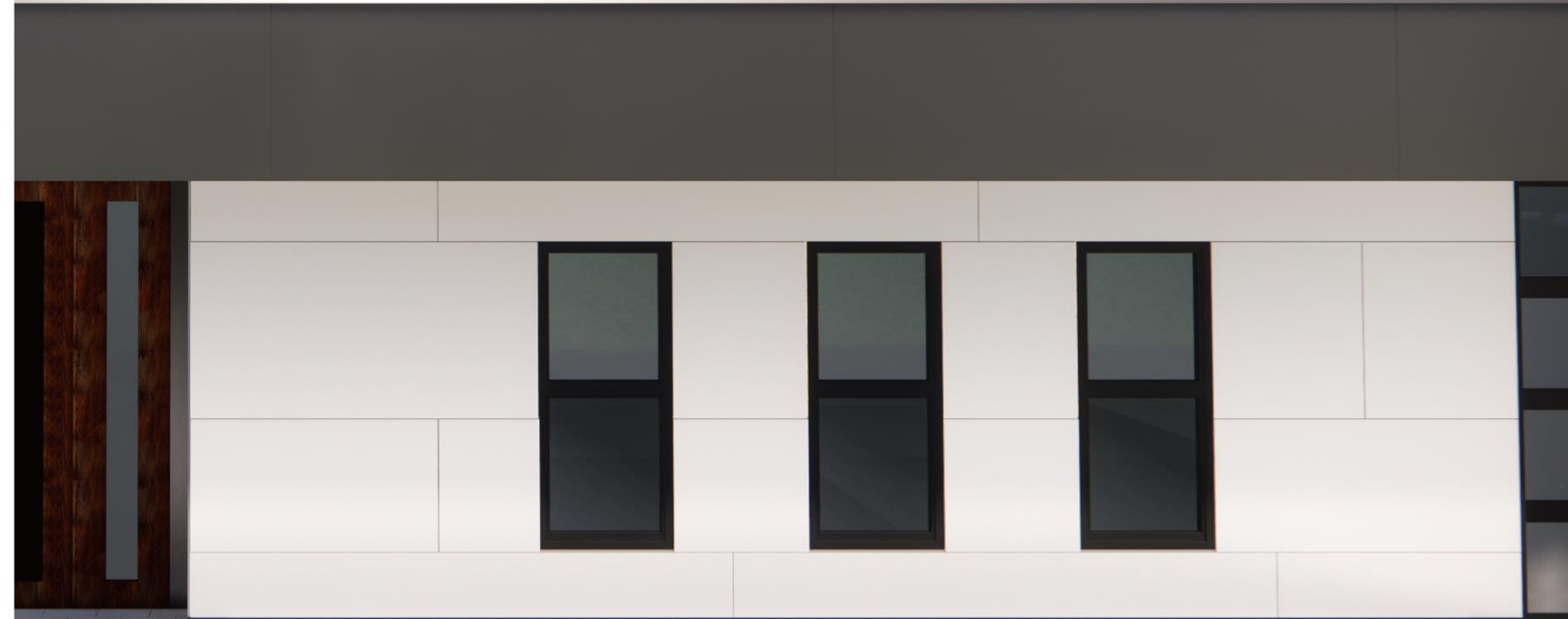
C640



C650



C660



Fabricshell



Texture: Fabric-Inspired Texture

Customized Color: RAL Color Chart

Panel Size: 400 / 600 / 800 × 2440 × 12 mm

400 / 600 / 800 × 3050 × 12 mm

400 / 600 / 800 × 2440 × 15 mm

400 / 600 / 800 × 3050 × 15 mm

The Fabricshell series features a refined fabric-inspired texture that adds softness and visual depth to the facade. Subtle surface relief creates a tactile appearance while maintaining a clean architectural expression. Based on the RAL color chart, customized colors allow Fabricshell to adapt to diverse design concepts, making it ideal for facades seeking warmth and contemporary elegance.



F10



F20



F35



F40



F50



F55



F59



Timbershell



Texture: Timber-Inspired Linear Texture

Customized Color: Developed from client reference

Panel Size: 600 × 2440 × 12 mm

600 × 3050 × 12 mm

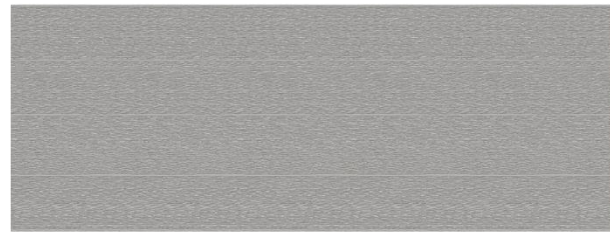
600 × 2440 × 15 mm

600 × 3050 × 15 mm

The Timbershell series features CNC-machined grooves that create the visual effect of narrow timber planks from a single panel. The linear segmentation introduces rhythm and depth to the façade while maintaining installation efficiency. Combined with a refined textured surface, Timbershell delivers the warmth of natural wood with the durability and stability of fiber cement.



T10



T20



T30



T40



T80



Bricklineshell



Texture: Brick-Inspired Linear Texture

Customized Color: RAL Color Chart

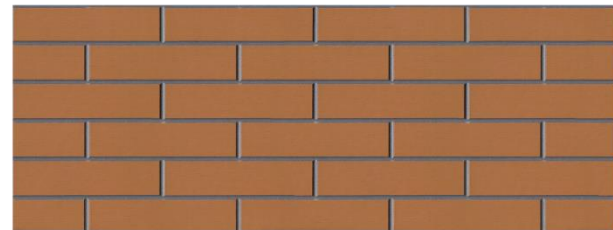
Panel Size: 600 × 2440 × 12 mm

600 × 3050 × 12 mm

600 × 2440 × 15 mm

600 × 3050 × 15 mm

The Bricklineshell series features precisely formed linear patterns that recreate the appearance of brickwork while maintaining the efficiency of panel installation. Combined with a refined fabric-like surface texture, it introduces depth and rhythm to the façade, offering the visual character of masonry with the durability and consistency of fiber cement panels.



BF35



BF60

Brickshell



Texture: Brick-Inspired Granular Texture

Customized Color: RAL Color Chart

Panel Size: 600 × 2440 × 12 mm

600 × 2440 × 15 mm

The Brickshell series recreates the character of traditional brick façades through a rough, sand-like surface texture and carefully defined brick patterns. The granular finish enhances depth and shadow on the façade, giving the building a solid and natural masonry expression. Combined with customizable colors from the RAL chart, Brickshell offers the visual richness of brickwork with the durability and consistency of fiber cement panels.



BG37



BG60



Stone-Stripshell



Texture: Stone Strip-Inspired Linear Texture

Customized Color: RAL Color Chart

Panel Size: 600 × 2440 × 12 mm

600 × 2440 × 15 mm

The Stone-Stripshell series recreates the refined appearance of narrow stacked stone strips through precisely formed linear patterns. The layered texture enhances shadow and depth on the façade, bringing a natural stone character to contemporary architecture. With customizable colors from the RAL chart, Stone-Stripshell combines the visual richness of stone with the durability and installation efficiency of fiber cement panels.



GS04



GS70

Masonryshell



Texture: Slate-Inspired Masonry Texture

Customized Color: RAL Color Chart

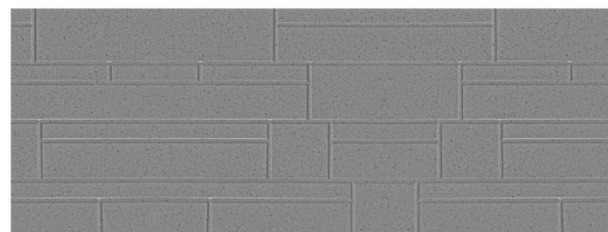
Panel Size: 600 × 2440 × 12 mm

600 × 2440 × 15 mm

The Masonryshell series recreates the natural character of slate and cultural stone through irregular masonry textures and layered surface relief. The rich texture enhances depth and shadow on the façade, giving buildings a strong architectural presence. With customizable colors based on the RAL chart, Masonryshell offers the visual richness of traditional masonry while maintaining the durability and installation efficiency of fiber cement panels.



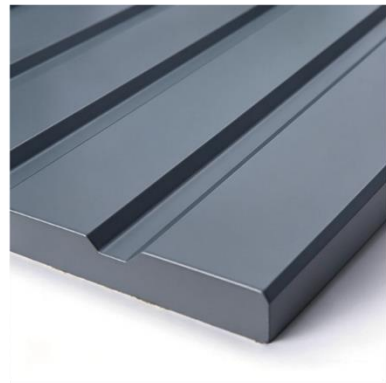
GM05



GM30



Ridgeshell



Texture: Smooth



Texture: Wiryshell finish



Texture: Fabricshell finish

Customized Color: RAL Color Chart

Panel Size: 600 × 2440 × 12 mm

600 × 3050 × 12 mm

600 × 2440 × 15 mm

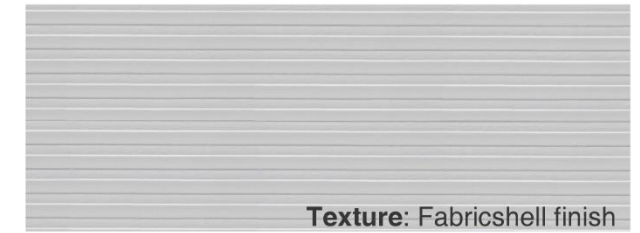
600 × 3050 × 15 mm

The Ridgeshell series is engineered using CNC carving technology to create precise linear grooves on the panel surface, followed by advanced coating treatment. The structured relief enhances the interplay of light and shadow, delivering a dynamic and expressive façade character.



RC11

Texture: Smooth



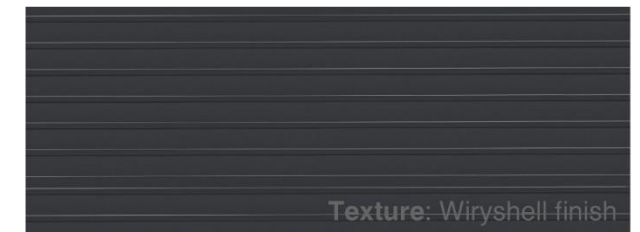
RF10

Texture: Fabricshell finish



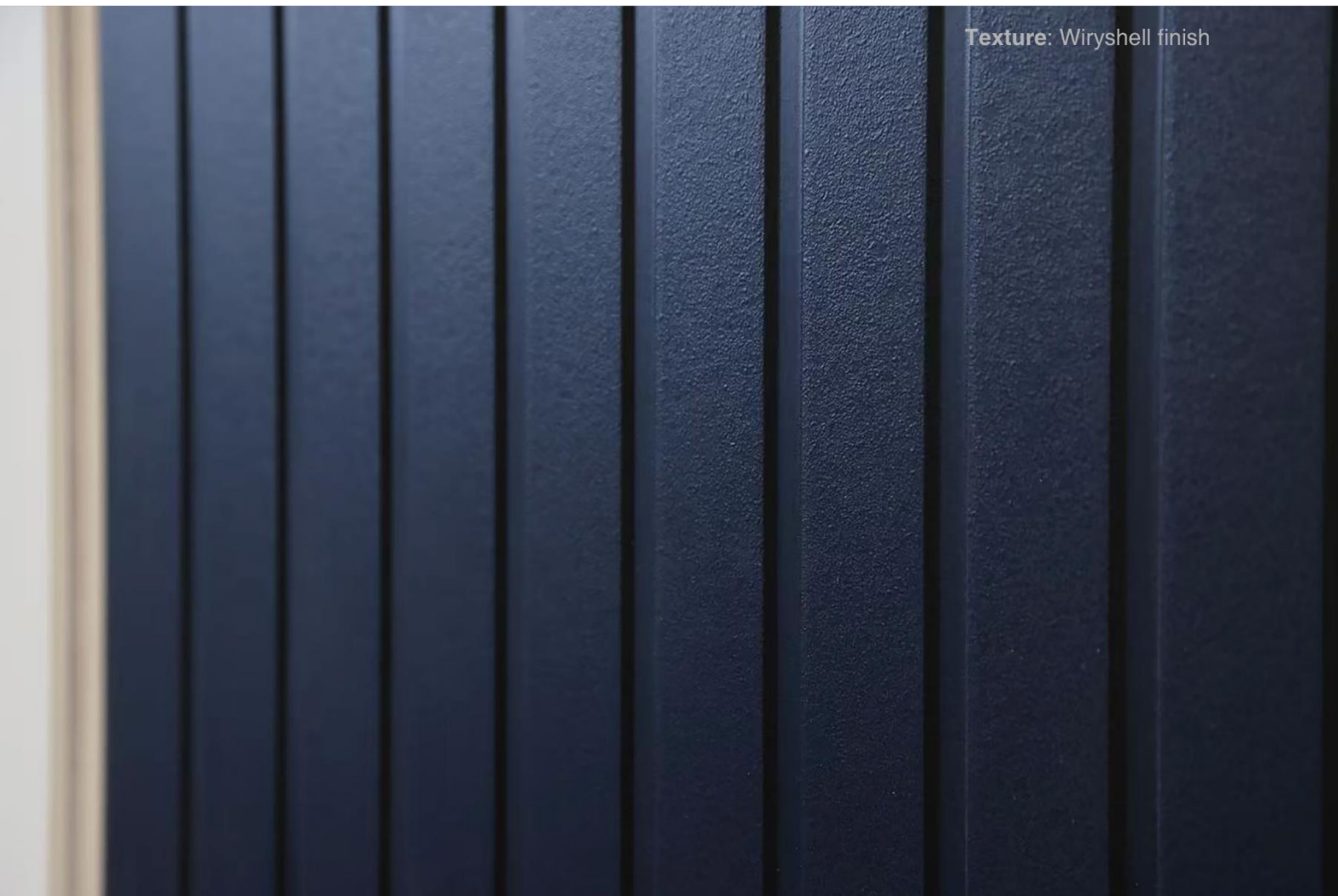
RW10

Texture: Wiryshell finish



RW80

Texture: Wiryshell finish



Texture: Wiryshell finish



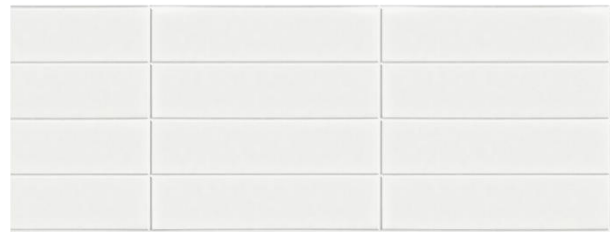
Texture: Fabricshell finish

Blockshell



Texture: Dimensional Block Texture
Customized Color: RAL Color Chart
Panel Size: 600 × 2440 × 12 mm
600 × 3050 × 12 mm
600 × 2440 × 15 mm
600 × 3050 × 15 mm

The Blockshell series features a dimensional block pattern that creates strong shadow lines and geometric depth across the façade. The sculpted surface introduces rhythm and architectural scale, allowing buildings to achieve a bold and contemporary expression. Combined with customizable colors from the RAL chart, Blockshell delivers the visual impact of three-dimensional masonry while maintaining the durability and installation efficiency of fiber cement panels.



B10



B60



Graniteshell



Texture: Flamed granite texture
Customized Color: Granite texture customization only
Panel Size: 400 / 600 / 800 × 2440 × 12 mm
400 / 600 / 800 × 2440 × 15 mm

The Graniteshell series replicates the textured expression of flamed granite with a richly grained surface finish. Formulated with mineral based coating materials, it delivers a natural stone appearance with depth and authenticity. Engineered for exterior durability, Graniteshell provides excellent UV resistance, high resistance to graffiti and environmental contaminants, and maintains ease of cleaning throughout its lifecycle.



G05



G12



G15



G20



G30



G40



G45



G50



G55



G70



G75



G85



Splendidshell



Texture: Smooth

Customized Color: Developed from client reference

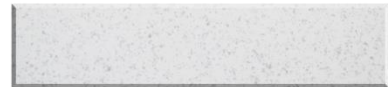
Panel Size: 400 / 600 / 800 × 2440 × 12 mm

400 / 600 / 800 × 3050 × 12 mm

400 / 600 / 800 × 2440 × 15 mm

400 / 600 / 800 × 3050 × 15 mm

The Splendidshell series combines a smooth surface with dynamic flaky and chipped color effects. It delivers strong visual texture while maintaining refined surface quality. Designed for long term exterior performance, it provides excellent UV resistance, high resistance to graffiti and environmental contaminants, and easy maintenance.



S01



S02



S03



S10



S25



S45



S47



S55



S60



S61



S78



S80



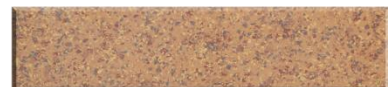
S85



S90



S95



S96



Wiryshell



Texture: Undulate

Customized Color: RAL Color Chart

Panel Size: 600 × 2440 × 12 mm

600 × 3050 × 12 mm

600 × 2440 × 15 mm

600 × 3050 × 15 mm

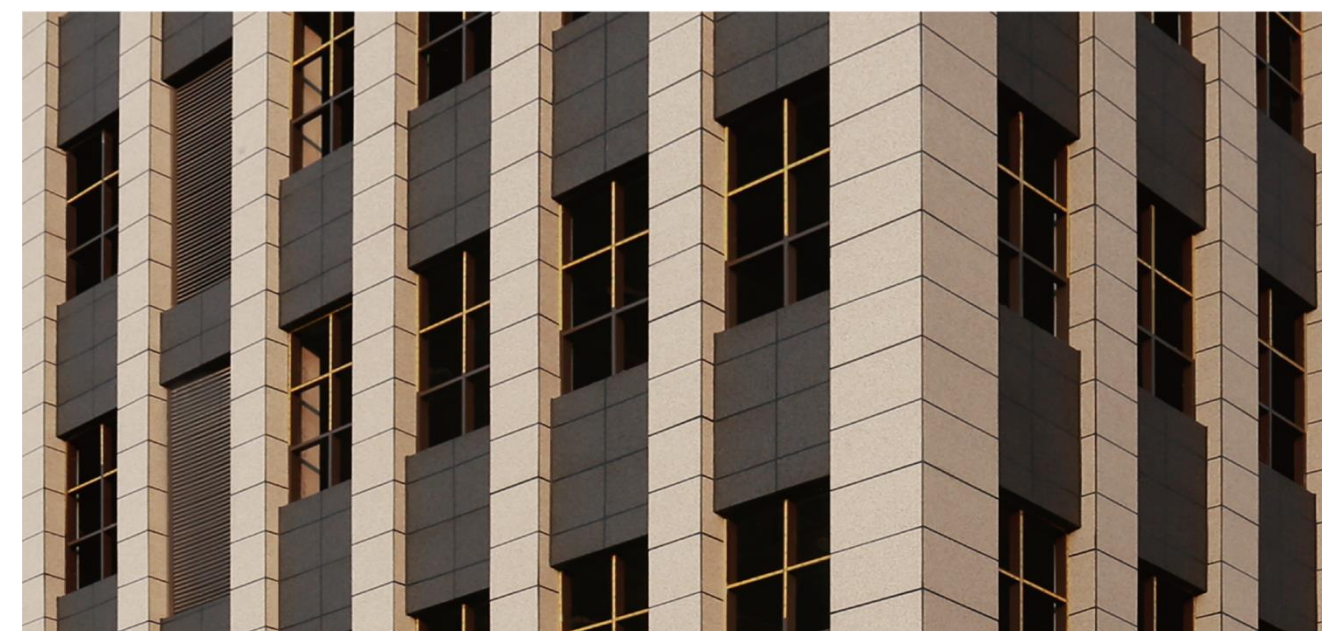
The Wiryshell series features a gently undulating surface combined with a smooth, vibrant finish, creating a dynamic and contemporary façade expression. Its subtle wave texture enhances light and shadow interplay, delivering a modern and avant-garde architectural appearance.



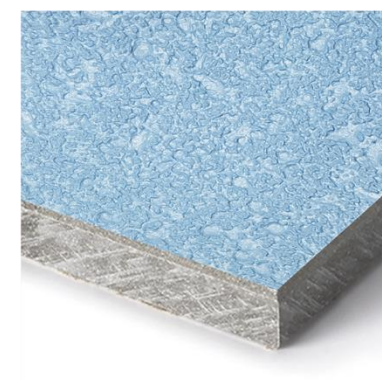
W01



W66



Relievoshell



Texture: Rough texture

Customized Color: RAL Color Chart

Panel Size: 600 × 2440 × 12 mm

600 × 2440 × 15 mm

The Relievoshell series features a bold sculpted relief surface with a distinctly rough texture. Rich color depth enhances the three-dimensional effect, bringing strength and character to architectural façades.



R10



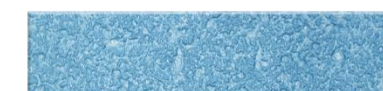
R20



R60



R68



R70



GAJ CLADDING

FOCUSED FOR OVER 20 YEARS
INNOVATIVE FACADE SOLUTIONS FOR A SUSTAINABLE FUTURE