

# GAJCladding CladForm

GC1 System Architecture Detail - v2.6



**GAJ CLADDING**

FOCUSED FOR OVER 20 YEARS

# Contents



Application.....	3
Principles for Designing.....	3
Construction Details.....	5
Remarks.....	18

# Application

This GAJCladding CladForm Panel System's Architectural Details provides a guidance on the most common details and design considerations to ensure that the construction details are suitable for the intended application of their project, consistent with industry practices in light of commercial and multifamily residential buildings.

This guide should be read along with the installation manual.

## Principles for Designing

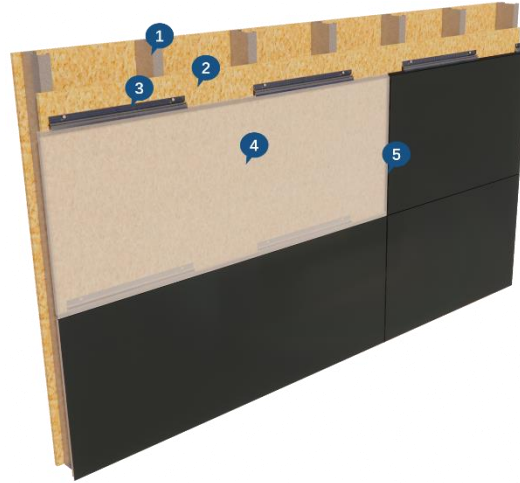
### Supporting Studs and Shear Walls

Certification for the structural stability of any supporting studs should be in accordance with local building regulations and must be obtained by the building owner or official representatives, such as the project engineer. Supporting studs are used, the shear walls should be checked by the installer prior to installation to confirm that it is flat and true, and that correct fixings and details are employed. Any discrepancy should be referred to the design team.

### GC1 Support System

The GAJCladding GC1 support system uses the specialized Clip mounting panel directly. It is suitable for buildings without external insulation, or where the external insulation has a high compressive capacity. It combines an elegant arrangement and is particularly suitable for CladForm panels. Specialized clips fit to the CladForm panels to secure the panels to the Supporting Studs or Shear Walls, making this system simpler, more reliable, more consistent in performance, and most importantly, easier for the customer to cut and install on site.

1. Exterior Wall
2. Vapor Barrier & Waterproof
3. CladForm Clip
4. CladForm Panel



## Anchors Requirements

Failure to use the clips that are GAJCladding products required may invalidate product warranty.

## Weather/Water Resistant Barriers

A material used on the exterior of a building. It can resist bulk liquids that has leaked, penetrated or penetrated into the outer coating to the outer sheath or concrete wall (depending on the application) and further into the wall assembly.

## Finishes

There are some different colors and textures, such as Colorshell, Fabricshell, Timbershell. etc. Each series finish color corresponds to a different level of finish textures. For more specific information, you can refer to the color catalog.

# Construction Details

This chapter provides an overview of the various common details to cover a wide range of situations that are expected on a regular basis.

These drawings do not contain the complete details required for the configuration and must be read along with the installation manual at [www.gajcladding.com](http://www.gajcladding.com). You should obtain architectural, engineering or other technical advice to assess whether these drawings are suitable for your particular project. Chongqing Gu An Jie Qizhong Building Materials Co., Ltd. is not responsible for the use of these drawings.

Figure 1: Elevation and Floor Plan.....	6
Figure 2: Vertical Joint Detail.....	7
Figure 3: Horizontal Joint Detail .....	8
Figure 4: Outer Corner Detail (Option 1).....	9
Figure 5: Outer Corner Detail (Option 2).....	10
Figure 6: Inner Corner Detail (Option 1).....	11
Figure 7: Inner Corner Detail (Option 2).....	12
Figure 8: Window Jamb Detail.....	13
Figure 9: Window Head Detail.....	14
Figure 10: Window Sill Detail.....	15
Figure 11: Parapet Detail .....	16
Figure 12: Base Detail .....	17

Figure 1: Elevation and Floor Plan

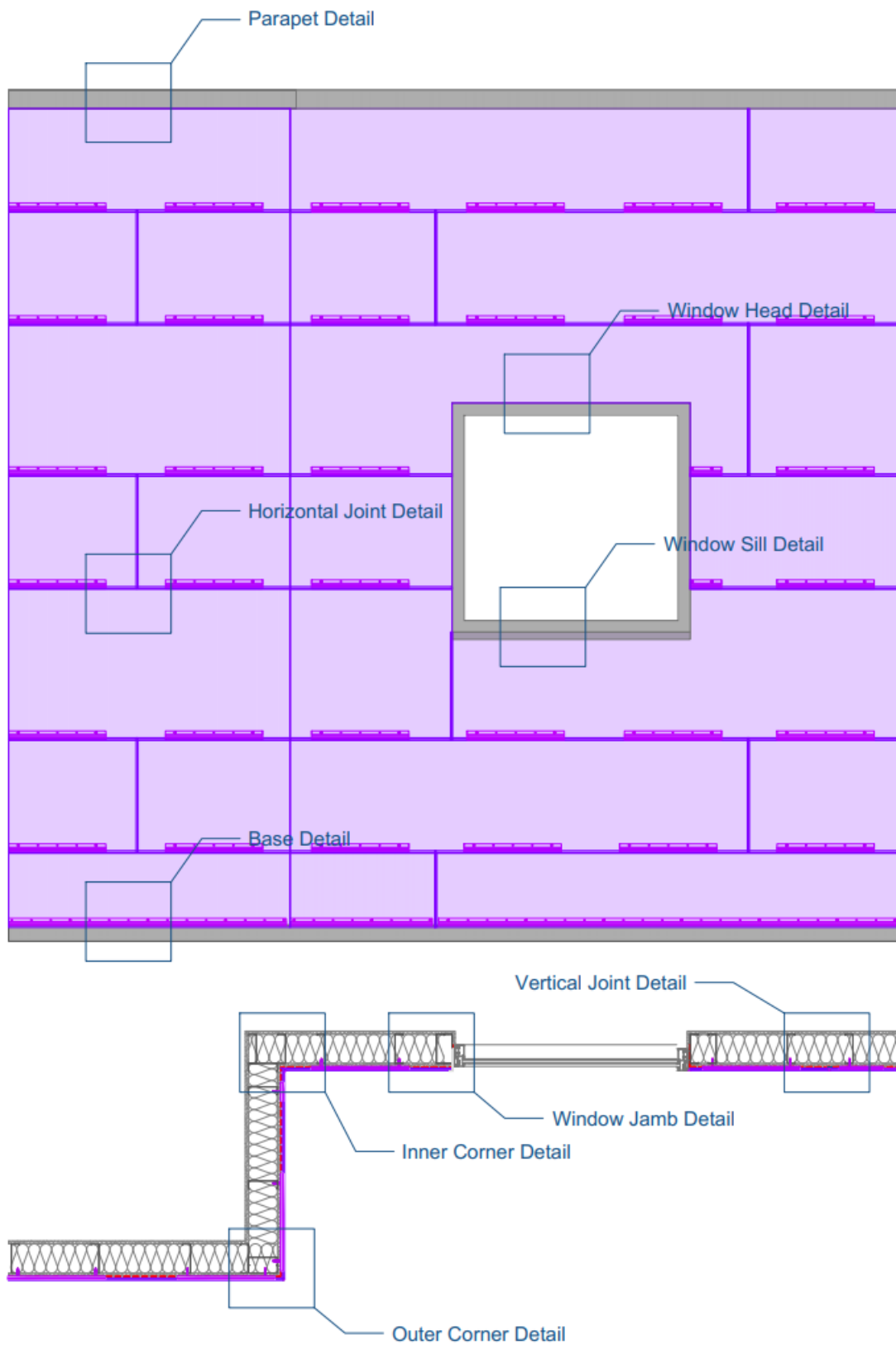
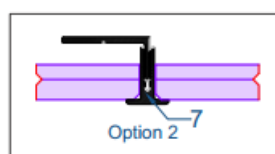
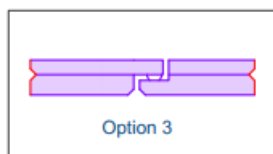
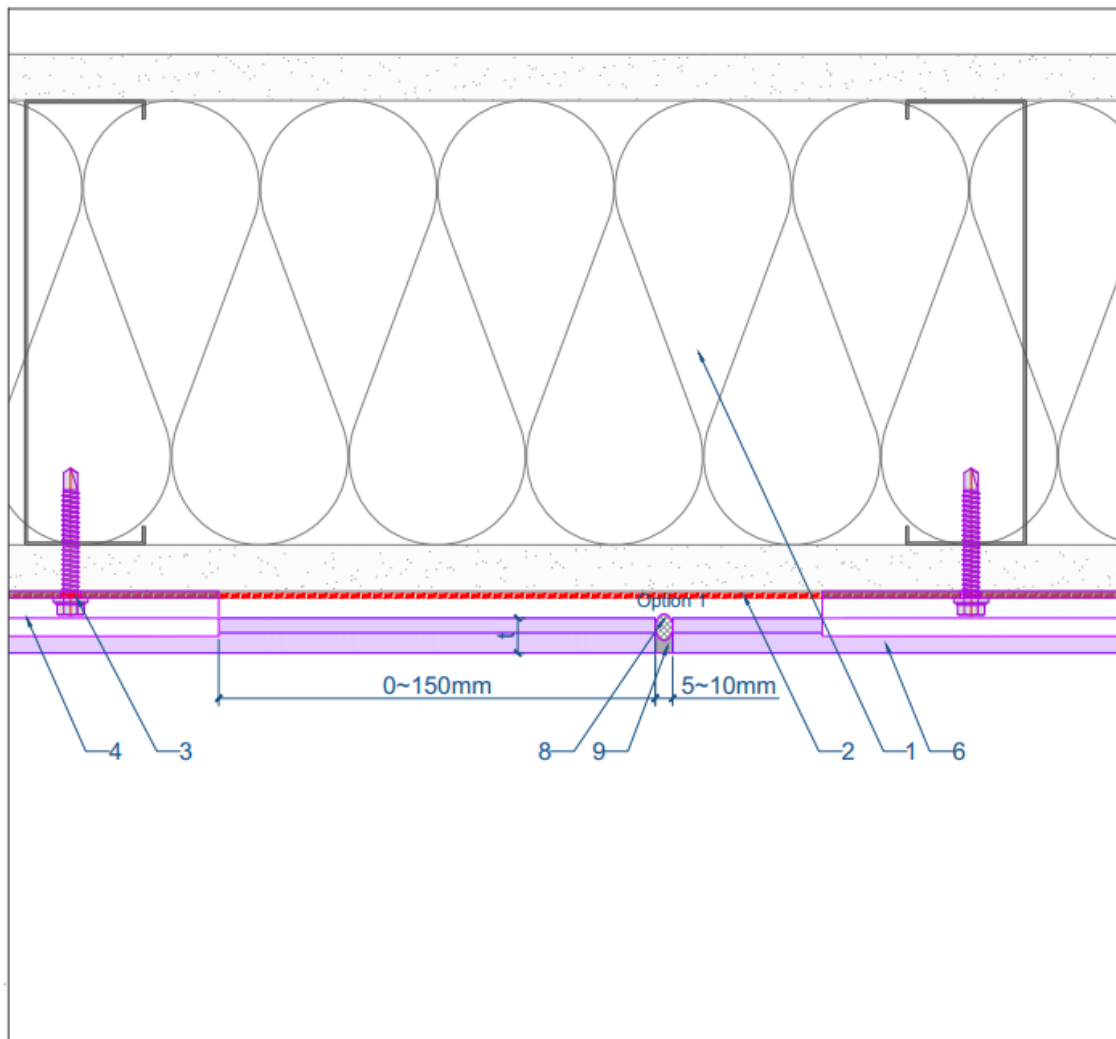


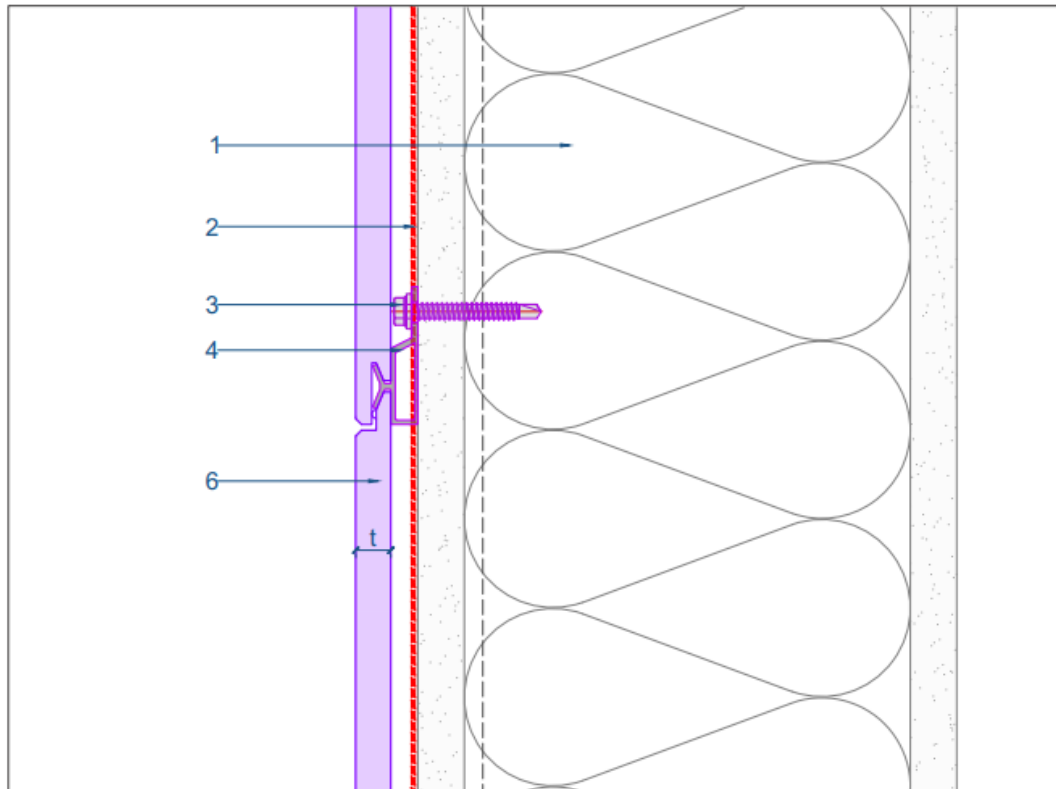
Figure 2: Vertical Joint Detail



#### Legend

- |                       |                         |                              |
|-----------------------|-------------------------|------------------------------|
| 1. Exterior Wall      | 7. T-profile Joint Trim | 13. Jamb Trim                |
| 2. Vapor Barrier      | 8. Foam Strip           | 14. Window Sill Trim         |
| 3. Substrate Fastener | 9. Joint Sealant        | 15. Z-profile Flashing       |
| 4. Clip               | 10. Support Board       | 16. Capping                  |
| 5. Starter Track      | 11. Outer Corner Trim   | 17. Self-drilling Screw M4.8 |
| 6. CladForm Panel     | 12. Inner Corner Trim   | t - Panel thickness          |

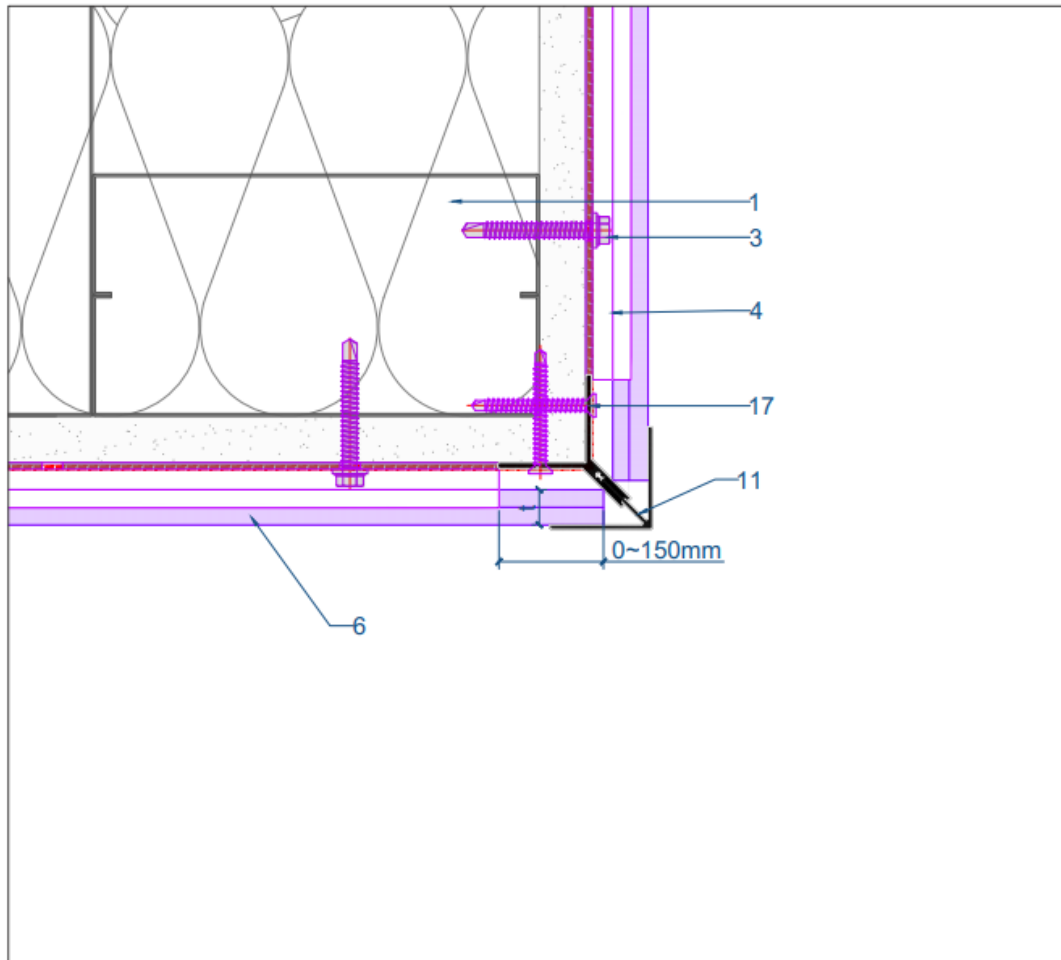
Figure 3: Horizontal Joint Detail



#### Legend

- |                       |                         |                              |
|-----------------------|-------------------------|------------------------------|
| 1. Exterior Wall      | 7. T-profile Joint Trim | 13. Jamb Trim                |
| 2. Vapor Barrier      | 8. Foam Strip           | 14. Window Sill Trim         |
| 3. Substrate Fastener | 9. Joint Sealant        | 15. Z-profile Flashing       |
| 4. Clip               | 10. Support Board       | 16. Capping                  |
| 5. Starter Track      | 11. Outer Corner Trim   | 17. Self-drilling Screw M4.8 |
| 6. CladForm Panel     | 12. Inner Corner Trim   | t - Panel thickness          |

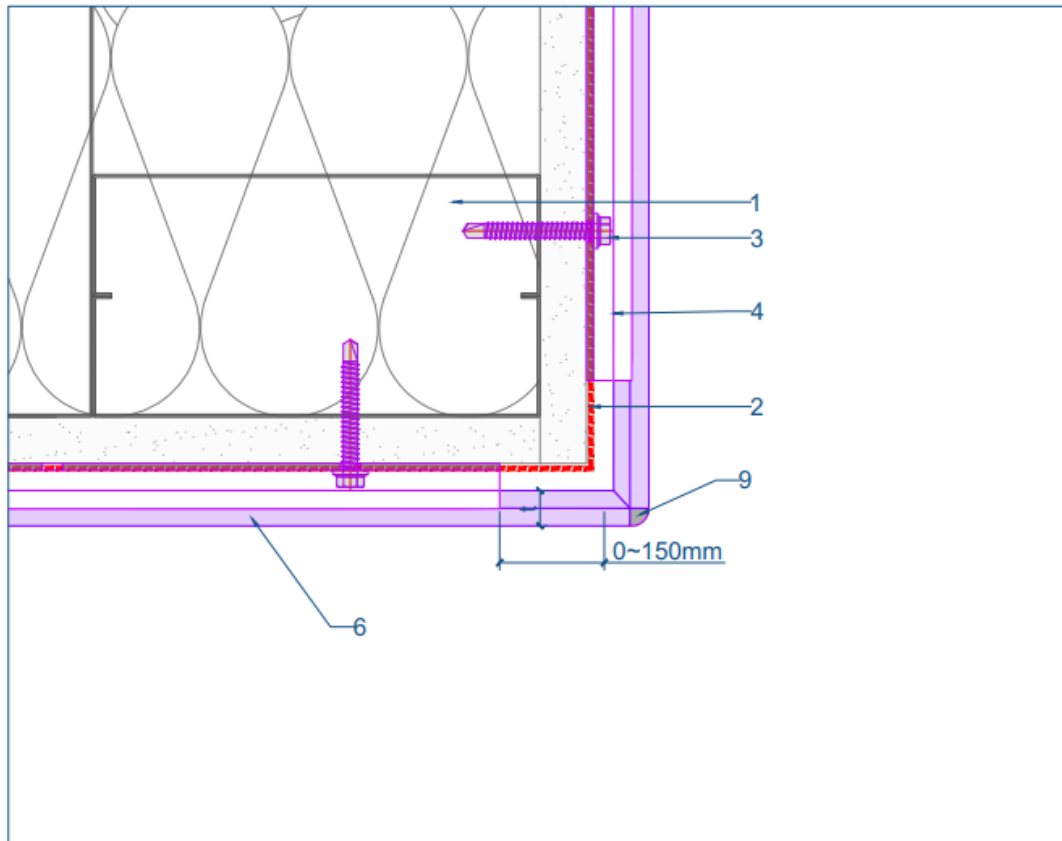
Figure 4: Outer Corner Detail (Option 1)



Legend

- |                       |                         |                              |
|-----------------------|-------------------------|------------------------------|
| 1. Exterior Wall      | 7. T-profile Joint Trim | 13. Jamb Trim                |
| 2. Vapor Barrier      | 8. Foam Strip           | 14. Window Sill Trim         |
| 3. Substrate Fastener | 9. Joint Sealant        | 15. Z-profile Flashing       |
| 4. Clip               | 10. Support Board       | 16. Capping                  |
| 5. Starter Track      | 11. Outer Corner Trim   | 17. Self-drilling Screw M4.8 |
| 6. CladForm Panel     | 12. Inner Corner Trim   | t - Panel thickness          |

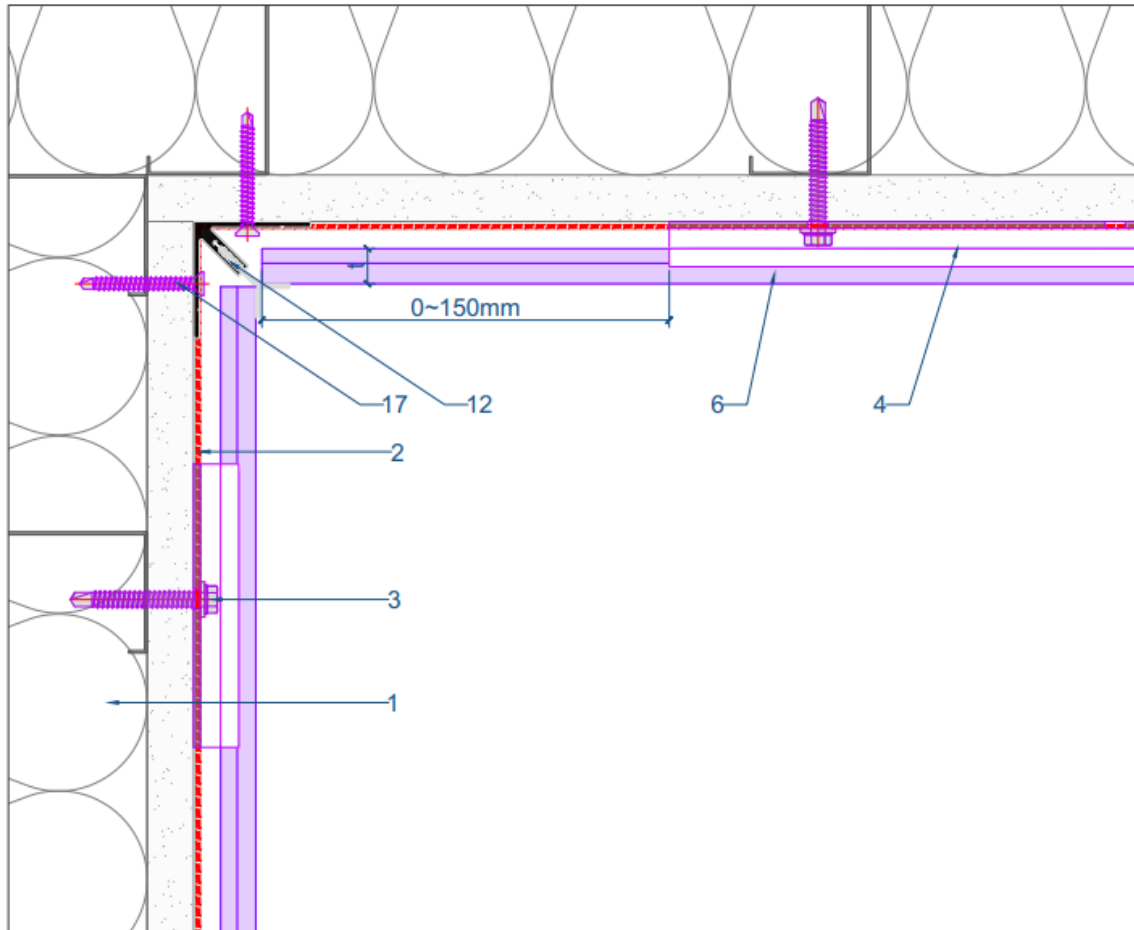
Figure 5: Outer Corner Detail (Option 2)



#### Legend

- |                       |                         |                              |
|-----------------------|-------------------------|------------------------------|
| 1. Exterior Wall      | 7. T-profile Joint Trim | 13. Jamb Trim                |
| 2. Vapor Barrier      | 8. Foam Strip           | 14. Window Sill Trim         |
| 3. Substrate Fastener | 9. Joint Sealant        | 15. Z-profile Flashing       |
| 4. Clip               | 10. Support Board       | 16. Capping                  |
| 5. Starter Track      | 11. Outer Corner Trim   | 17. Self-drilling Screw M4.8 |
| 6. CladFrom Panel     | 12. Inner Corner Trim   | t - Panel thickness          |

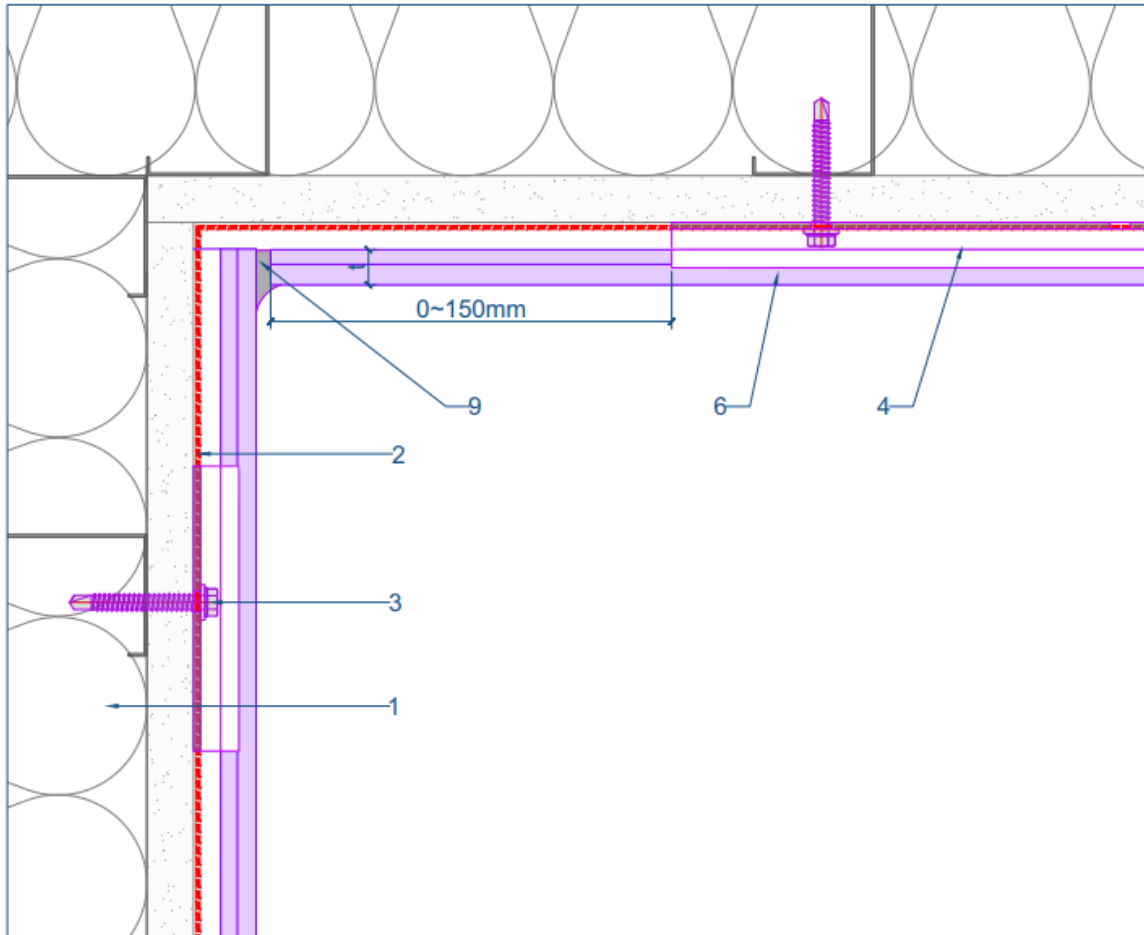
Figure 6: Inner Corner Detail (Option 1)



#### Legend

- |                       |                         |                              |
|-----------------------|-------------------------|------------------------------|
| 1. Exterior Wall      | 7. T-profile Joint Trim | 13. Jamb Trim                |
| 2. Vapor Barrier      | 8. Foam Strip           | 14. Window Sill Trim         |
| 3. Substrate Fastener | 9. Joint Sealant        | 15. Z-profile Flashing       |
| 4. Clip               | 10. Support Board       | 16. Capping                  |
| 5. Starter Track      | 11. Outer Corner Trim   | 17. Self-drilling Screw M4.8 |
| 6. CladForm Panel     | 12. Inner Corner Trim   | t - Panel thickness          |

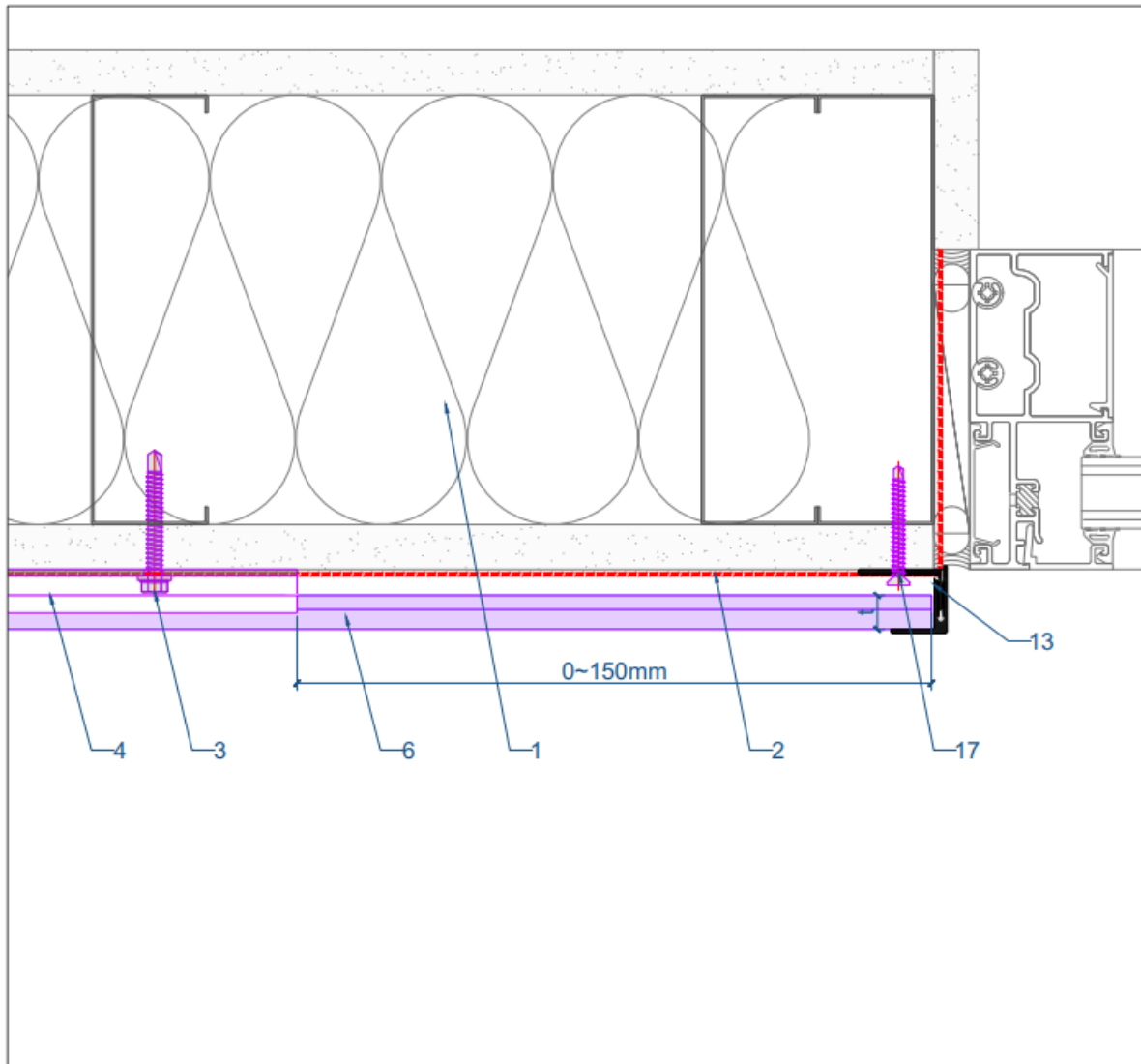
Figure 7: Inner Corner Detail (Option 2)



Legend

- |                       |                         |                              |
|-----------------------|-------------------------|------------------------------|
| 1. Exterior Wall      | 7. T-profile Joint Trim | 13. Jamb Trim                |
| 2. Vapor Barrier      | 8. Foam Strip           | 14. Window Sill Trim         |
| 3. Substrate Fastener | 9. Joint Sealant        | 15. Z-profile Flashing       |
| 4. Clip               | 10. Support Board       | 16. Capping                  |
| 5. Starter Track      | 11. Outer Corner Trim   | 17. Self-drilling Screw M4.8 |
| 6. CladForm Panel     | 12. Inner Corner Trim   | t - Panel thickness          |

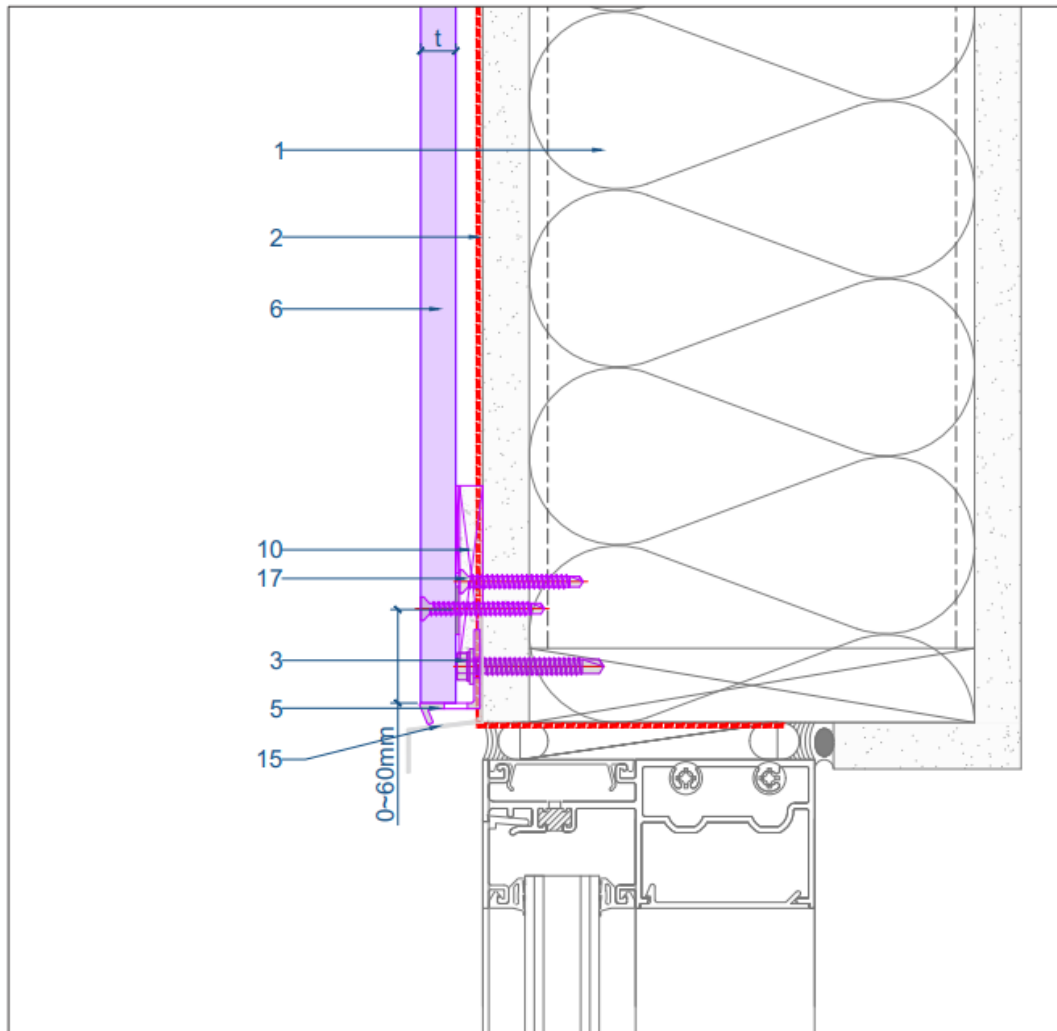
Figure 8: Window Jamb Detail



Legend

- |                       |                         |                              |
|-----------------------|-------------------------|------------------------------|
| 1. Exterior Wall      | 7. T-profile Joint Trim | 13. Jamb Trim                |
| 2. Vapor Barrier      | 8. Foam Strip           | 14. Window Sill Trim         |
| 3. Substrate Fastener | 9. Joint Sealant        | 15. Z-profile Flashing       |
| 4. Clip               | 10. Support Board       | 16. Capping                  |
| 5. Starter Track      | 11. Outer Corner Trim   | 17. Self-drilling Screw M4.8 |
| 6. CladForm Panel     | 12. Inner Corner Trim   | t - Panel thickness          |

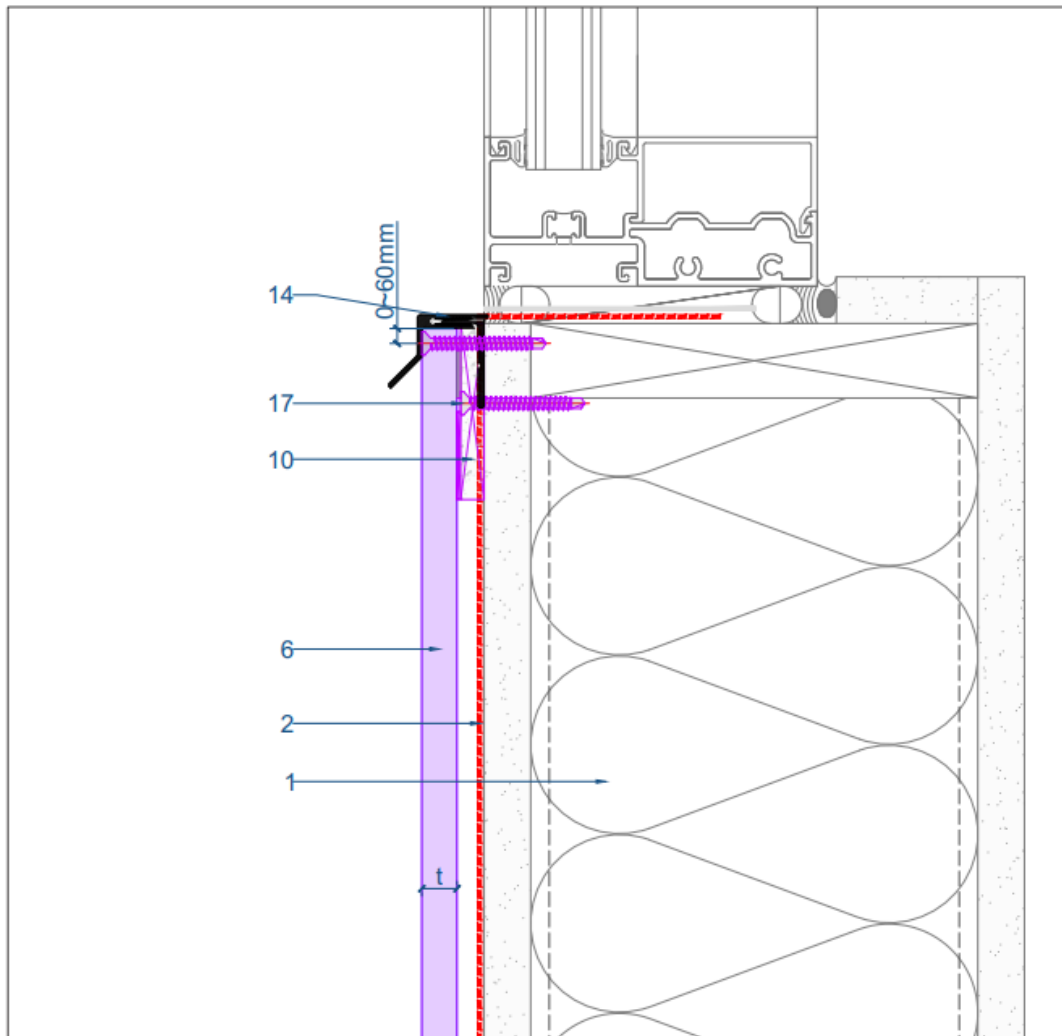
Figure 9: Window Head Detail



#### Legend

- |                       |                         |                              |
|-----------------------|-------------------------|------------------------------|
| 1. Exterior Wall      | 7. T-profile Joint Trim | 13. Jamb Trim                |
| 2. Vapor Barrier      | 8. Foam Strip           | 14. Window Sill Trim         |
| 3. Substrate Fastener | 9. Joint Sealant        | 15. Z-profile Flashing       |
| 4. Clip               | 10. Support Board       | 16. Capping                  |
| 5. Starter Track      | 11. Outer Corner Trim   | 17. Self-drilling Screw M4.8 |
| 6. CladForm Panel     | 12. Inner Corner Trim   | t - Panel thickness          |

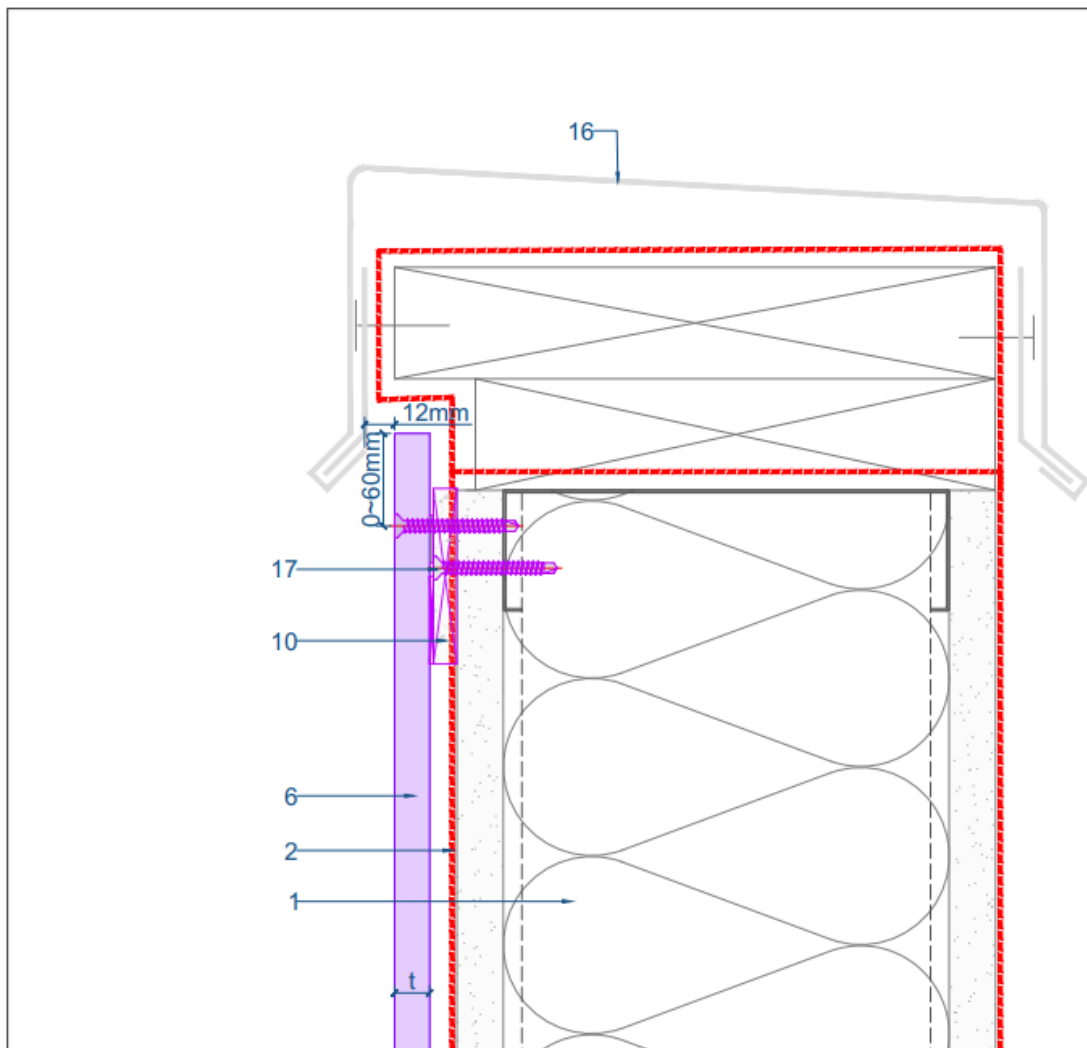
Figure 10: Window Sill Detail



#### Legend

- |                       |                         |                              |
|-----------------------|-------------------------|------------------------------|
| 1. Exterior Wall      | 7. T-profile Joint Trim | 13. Jamb Trim                |
| 2. Vapor Barrier      | 8. Foam Strip           | 14. Window Sill Trim         |
| 3. Substrate Fastener | 9. Joint Sealant        | 15. Z-profile Flashing       |
| 4. Clip               | 10. Support Board       | 16. Capping                  |
| 5. Starter Track      | 11. Outer Corner Trim   | 17. Self-drilling Screw M4.8 |
| 6. CladForm Panel     | 12. Inner Corner Trim   | t - Panel thickness          |

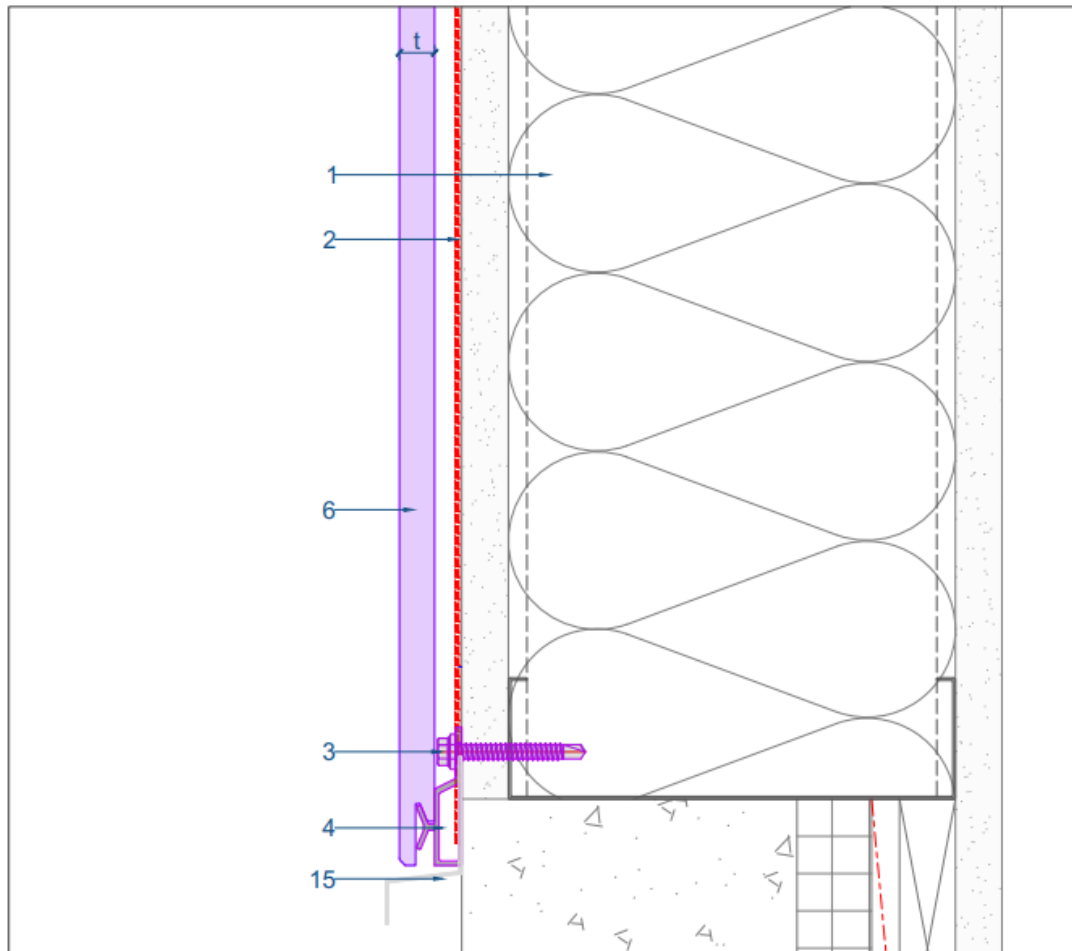
Figure 11: Parapet Detail



## Legend

- |                       |                         |                              |
|-----------------------|-------------------------|------------------------------|
| 1. Exterior Wall      | 7. T-profile Joint Trim | 13. Jamb Trim                |
| 2. Vapor Barrier      | 8. Foam Strip           | 14. Window Sill Trim         |
| 3. Substrate Fastener | 9. Joint Sealant        | 15. Z-profile Flashing       |
| 4. Clip               | 10. Support Board       | 16. Capping                  |
| 5. Starter Track      | 11. Outer Corner Trim   | 17. Self-drilling Screw M4.8 |
| 6. CladForm Panel     | 12. Inner Corner Trim   | t - Panel thickness          |

Figure 12: Base Detail



#### Legend

- |                       |                         |                              |
|-----------------------|-------------------------|------------------------------|
| 1. Exterior Wall      | 7. T-profile Joint Trim | 13. Jamb Trim                |
| 2. Vapor Barrier      | 8. Foam Strip           | 14. Window Sill Trim         |
| 3. Substrate Fastener | 9. Joint Sealant        | 15. Z-profile Flashing       |
| 4. Clip               | 10. Support Board       | 16. Capping                  |
| 5. Starter Track      | 11. Outer Corner Trim   | 17. Self-drilling Screw M4.8 |
| 6. CladForm Panel     | 12. Inner Corner Trim   | t - Panel thickness          |

# Remarks

## Cleaning

There are two methods of cleaning panel, mechanical cleaning and chemical cleaning. In principle, perform the cleaning of the panel over the entire surface, because partial cleaning can result in color and tonal imbalance. Normal stains can be removed with a sponge and water. Warning High Pressure Cleaning is a rough treatment of panel. Use of a high-pressure cleaner may damage the surface. Therefore, high pressure cleaning is not recommended.

## Impact by Pollution and Nature

Weather and nearby vegetation may affect the appearance of the panels. Take caution to avoid pollution, dust and leaves from trees, bushes and flowers to not impact the integrity of the panels. Excessive humidity, salts, or other chemical agents can corrode the panel and attack metal.

## Special Information

THE INFORMATION OR DATA IN THIS SHEET SERVES TO ENSURE THE PRODUCT'S INTENDED PURPOSE OR ITS SUITABILITY FOR USE AND IS BASED ON OUR FINDINGS AND EXPERIENCE. NEVERTHELESS, USERS ARE RESPONSIBLE FOR ESTABLISHING THE SUITABILITY OF THE PRODUCT FOR ITS INTENDED USE. APPLICATIONS OTHER THAN THOSE EXPLICITLY MENTIONED IN THIS TECHNICAL DATA SHEET ARE ONLY PERMISSIBLE AFTER PRIOR CONSULTATION WITH CHONGQING GU AN JIE QIZHONG BUILDING MATERIALS CO., LTD WHERE NO APPROVAL IS GIVEN, SUCH APPLICATIONS ARE AT THE RISK OF THE USER. THIS APPLIES IN PARTICULAR WHEN THE PRODUCT IS USED IN COMBINATION WITH OTHER PRODUCTS. WHEN A NEW TECHNICAL DATA SHEET IS PUBLISHED, ALL PREVIOUS TECHNICAL DATA SHEETS ARE NO LONGER VALID.



# GAJCladding CladForm GC1 System Architecture Detail

June 15, 2025



**GAJ CLADDING**

*FOCUSED FOR OVER 20 YEARS*

Chongqing Guanjie Qizhong Building Materials Co., Ltd.  
[info@gajcladding.com](mailto:info@gajcladding.com)  
[www.gajcladding.com](http://www.gajcladding.com)