

GAJCladding CladForm

INSTALLATION MANUAL - v3.5



GAJ CLADDING

FOCUSED FOR OVER 20 YEARS

Contents

Introduction	2
About GAJCladding CladForm	2
Advantages of GAJCladding CladForm.....	2
Inspection, Proper Handling and Storage.....	3
Product Inspection	3
Storage.....	3
Proper Handling	4
Forklift	4
Basics.....	5
Panel Cutting.....	5
Overview Panel Sizes	5
Panel Technical Date	6
Panel Edge Profile	6
Edge Cleaning & Treatment	6
Metal Support.....	7
System Components	7
GAJCladding CladForm Horizontal Clip	7
GAJCladding CladForm Starter Track.....	9
CladForm Vertical Rail and Clip Fastener	8
Attachment System	9
Panel Joints.....	10
Special Locations	12
Panel Layout on Facade	16
Bottom-up Installation.....	16
Remarks.....	17

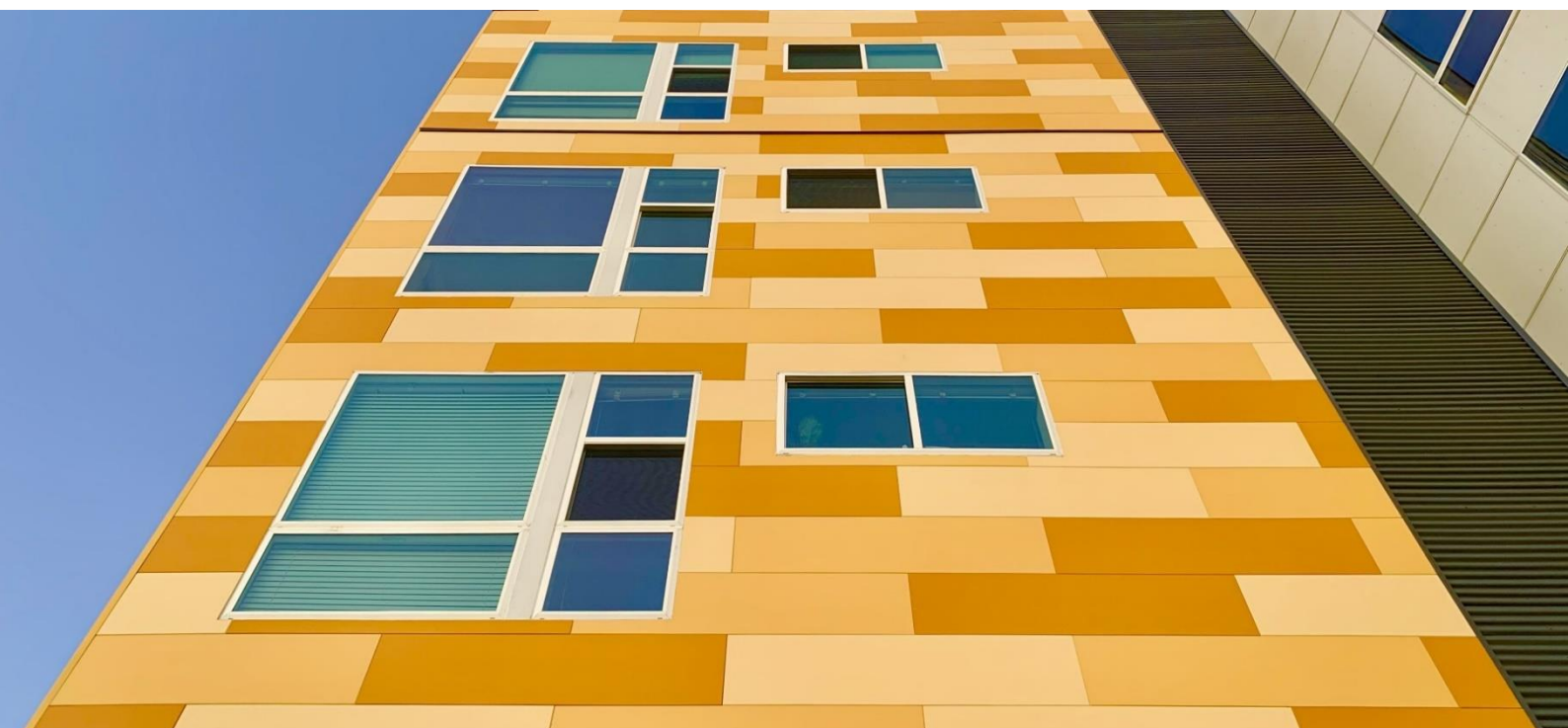
Introduction

About GAJCladding CladForm

CladForm panel system provides you with the GAJCladding unique top-quality fiber cement specific industry coating and finishes on fiber cement board that are ideal for high-end and aesthetic façade solutions, modern and designer arrangements, and top-level exterior architectures. The system uses hidden clips to attach the panels. Let yourself be inspired by our products and present your vision through our endless variations of this single material.

Advantages of GAJCladding CladForm

- Maximum protection against weather
- Excellent longevity, 30 years of decoration life and 15 years of finish warranty
- Light weight and easy for on-site application, and easy installation in any climate
- Almost no maintenance is required.
- High quality panel finishes in strictly controlled environment assure no color fading or coat peeling off.
- High sustainability
- Noncombustible



Inspection, Proper Handling and Storage

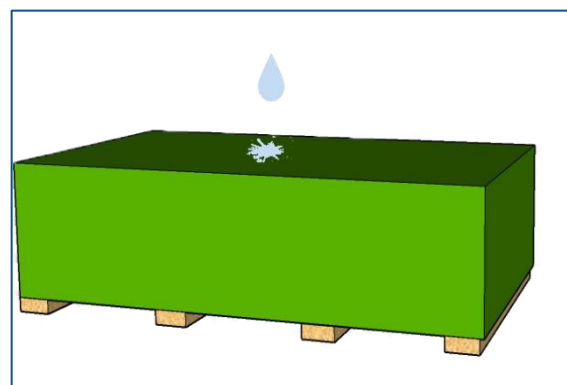
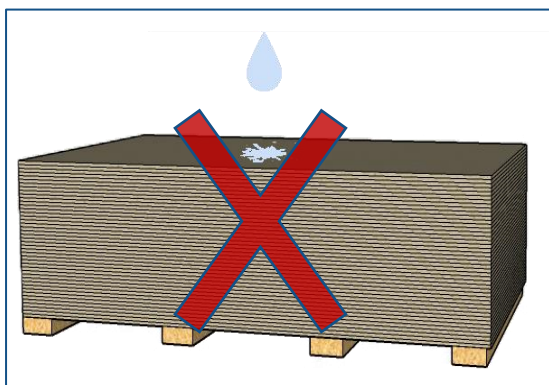
Product Inspection

Please carefully inspect all products before installation, whether they are damaged during transportation or have irregular surface products. Should you have a question or problem with your order, contact your local dealer or GAJCladding Customer Service.

Storage

GAJCladding Panels products are delivered with on the pallet. Hereafter the pallets should be kept under a roof, protected from rainfall, direct sunlight, and other weather influences. If the panel is stored outside, it should be protected with an additional waterproof covering. Any panel to be installed must be kept dry.

GAJCladding Panels must be stored on a flat and dry level surface on pallets or sleepers with a minimum distance of 30cm between the stacks on all sides, leaving the possibility of ventilation around the panels. Maximum 5 pallets in a stack at the warehouse and maximum 2 pallets in a stack on the building site. Each stack should not be more than 1000 mm high. Use foam protection layer between the panels.



It is recommended to organize the pallets of the pre-cut and pre-drilled panels according to their sequences marked by the manufacturer or prefabricator in order to make the installation more efficient.

Proper Handling

Always lift panels off each other by two persons, and do NOT slide them over one another to avoid scratches and damages of the panel surface. To carry the panels, always lift up them vertically and handle their edges by two persons, avoid handling them with panel flat side from facing up or down, as this can result in cracks in the panel. Do NOT draw or drag a panel over or under the next panel, as this operation will cause scratches and damage on the surface. Please note that the damaged panels caused by such operation will not be in the manufacturer's warranty.

Forklift

Fork length must support the pallet entirely; if required, use fork extensions.



Basics

Panel Cutting

All GAJCladding CladForm panels can be cut using a circular saw, or a jigsaw equipped with a diamond tipped blade. The panel can also be cut by a hand tool or a stationary device.

Note 1: When using fast running tools, dust exhaustion must be employed.

Note 2: When using hand tools, cut the panels backside up. When using stationary saw equipment, cut the panels front-side up (the saw blade must always attack the board from the front-side).

Note 3: One panel is cut at one time.

Note 4: Cutting depth should be beyond the panel thickness.

Overview Panel Sizes

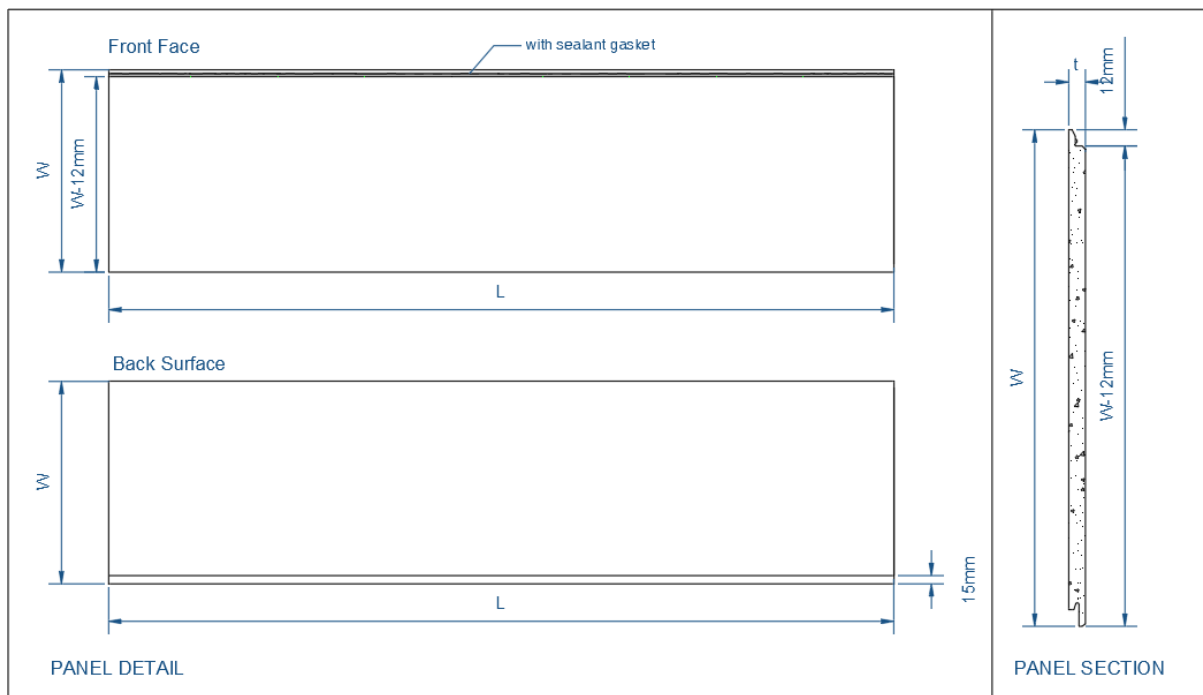
Panel Size (Width x Length x Thickness):

400 / 600 x 2440 x 12 mm

400 / 600 x 2440 x 15 mm

400 / 600 x 3050 x 12 mm

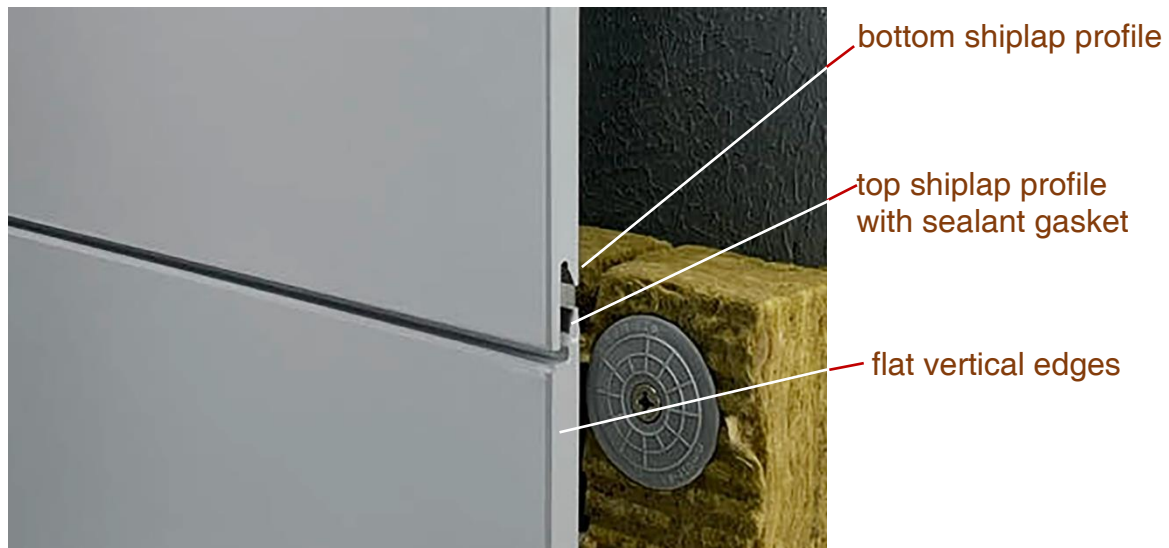
400 / 600 x 3050 x 15 mm



Panel Technical Data

Properties		Text Value
Density		1.47g/cm ³
Flexural Strength (Equilibrium Conditioning))		18.7MPa
Flexural Strength (Wet Conditioning)		13.2MPa
100 Freeze-Thaw Cycles Resistance	Physical Observations	Pass
	Flexural Strength Retention Rate	84.5%
50 Soak/Dry Cycles Performance		97%
Falling Ball Impact		Pass (10J)
Non-Combustibility		Class A

Panel Edge Profile



Edge Cleaning & Treatment

After cutting the panel, sand the cut edges to smooth the surface. Remove dust caused by cutting and drilling from both the front and backside of the panels using a soft brush/duster or a vacuum cleaner.

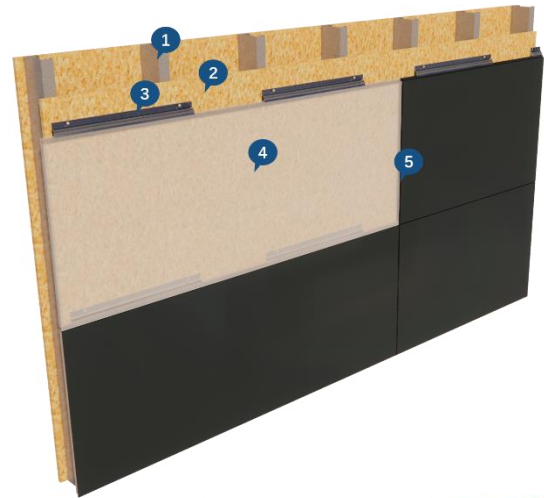
Apply GAJCladding edge sealant or the specified exterior primer to seal the edges and holes. Run the applicator along the panel edges and holes to ensure full coverage. Repeat the application if necessary to achieve complete sealing.

Metal Support

System Components

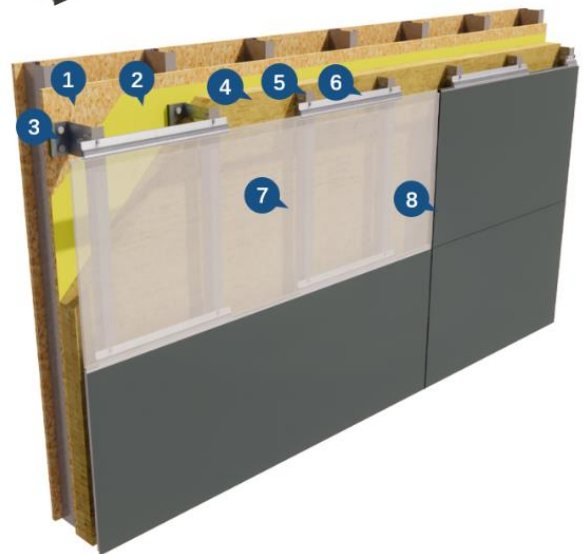
1. Systems without external insulation (GC1)

1. Structural Stud
2. Sheathing & Vapor Barrier
3. Clip
4. CladForm Panel
5. Weatherproof Sealant & Foam Strip



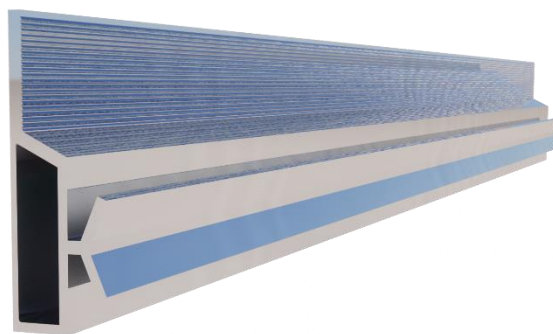
2. Systems with external insulation (GC2)

1. Exterior Wall
2. Vapor Barrier & Waterproof
3. Brackets
4. Exterior Thermal Insulation
5. Vertical Rail
6. Clip
7. CladForm Panel
8. Weatherproof Sealant & Foam Strip



CladForm Horizontal Clip

Aluminum Clip (508 mm length): Suitable for 12 mm and 15 mm panels.



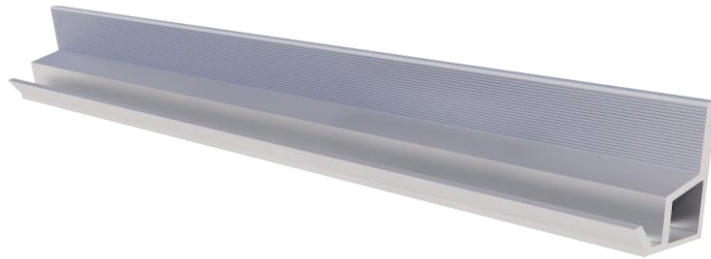
Galvanized Steel Clip (57 mm length): Suitable for 15 mm panels.



GAJCladding CladForm Starter Track

When using aluminum clips, a matching aluminum starter track (2400mm length) can be selected.

When using galvanized steel clips, the clips themselves serve as the starter track.



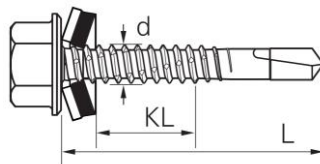
CladForm Vertical Rail and Clip Fastener

1. Vertical Rail:

For aluminum material: Minimum Profile Thickness $\geq 2.5\text{mm}$.

For Galvanized/Stainless Steel material: Minimum Profile Thickness $\geq 1.2\text{mm}$.

2. Clip Fastener

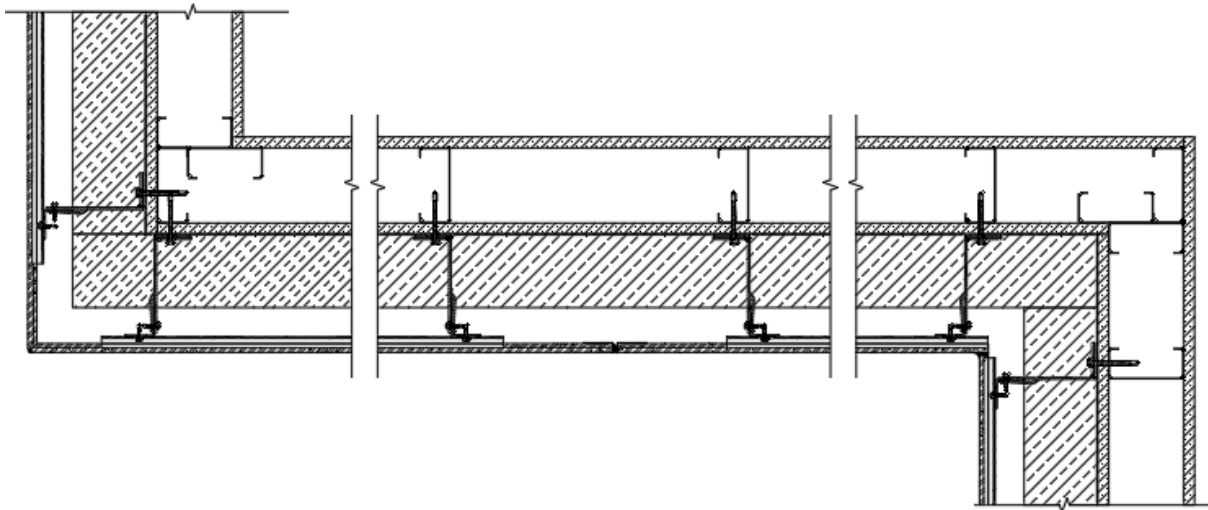


Material: Galvanized/Stainless Steel.

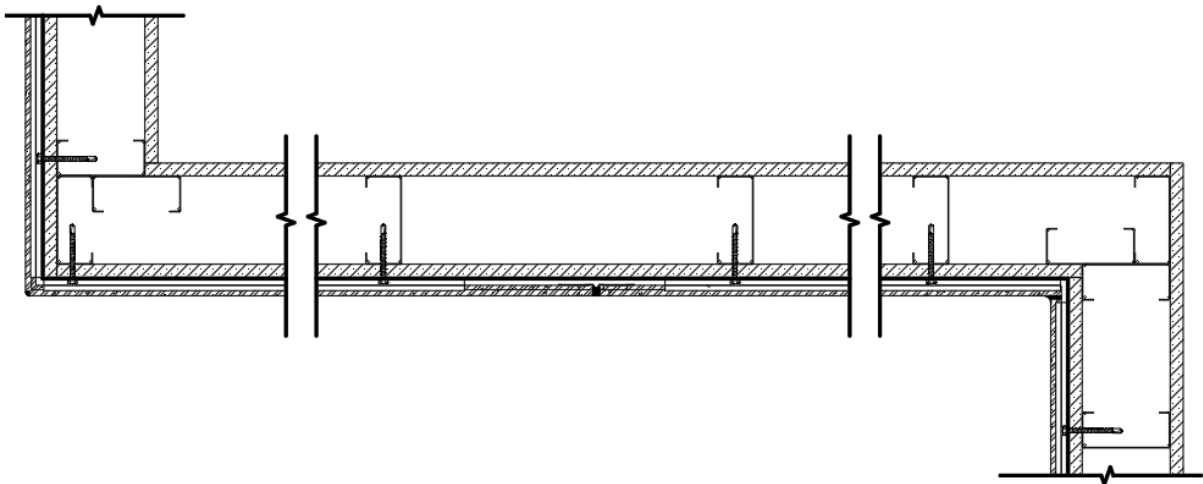
Minimum size: M4.8 x 19, $d \geq 4.8\text{mm}$, $L \geq 19\text{mm}$.

Attachment System

Systems with external insulation



Systems without external insulation

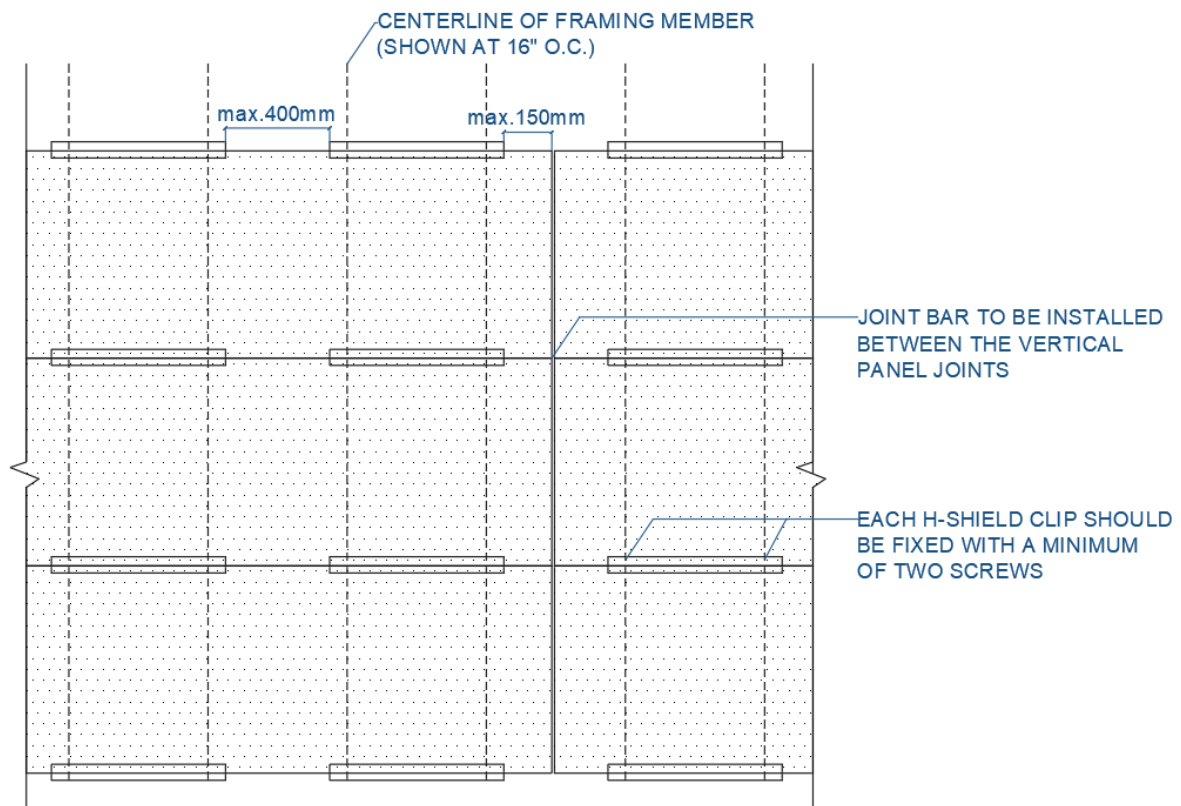


Use GAJCladding CladForm Clips

Use GAJCladding manufactured clips specifically designed for CladForm panels to secure the panels.

Each **Aluminum CladForm Clip** should be fixed with a minimum of two screws and should be fixed to Structural Stud or Vertical Rail. Normally, 3 clips are required for each panel. The spacing between clips (measured from the right edge of one clip to the left edge of the next clip) must not exceed 400 mm, and the distance from the clip edge to the panel edge must not exceed 150 mm for 12 mm panels and 200 mm for 15 mm panels.

Aluminum clips can be cut when standard clips cannot meet these requirements, ensuring compliance with the above spacing rules.



When using the 57 mm **Galvanized Steel Clips**, each standard panel must be installed with a minimum of 6 clips. All clips must be fixed with screws to the stud or vertical rail. The spacing between clips must not exceed 406 mm (16" O.C.), and the distance from the clip edge to the panel edge must not exceed 200 mm.

Panel Joints

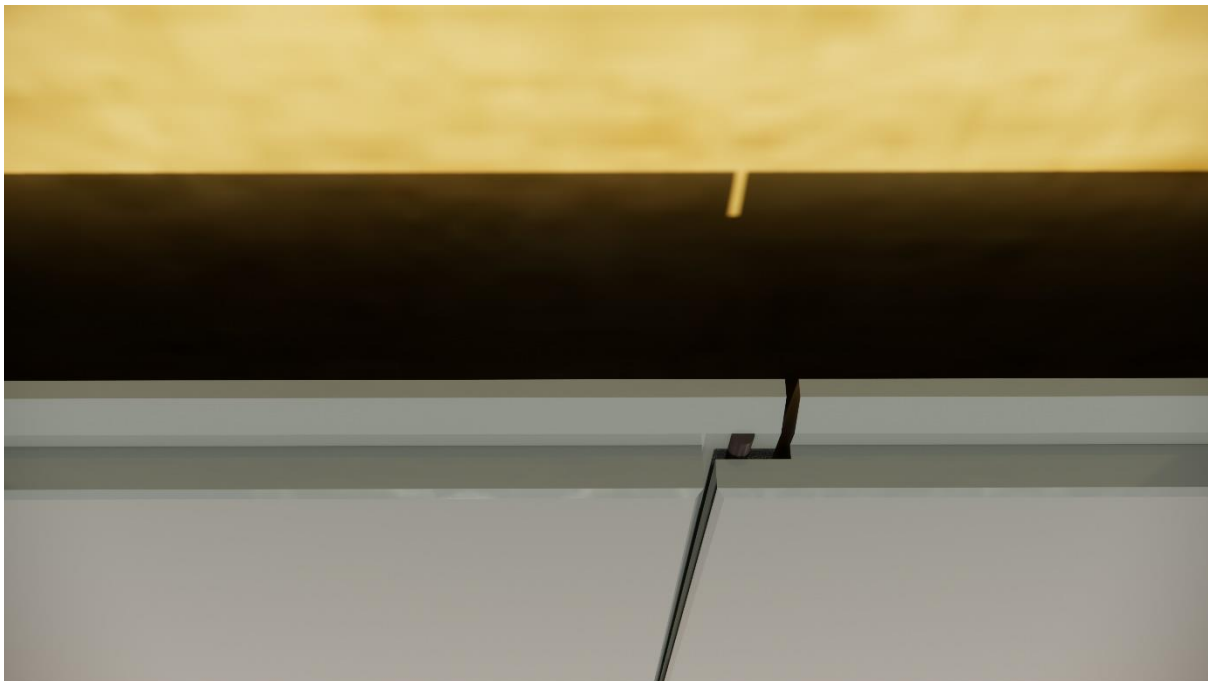
Horizontal panel joints are designed with special structures and gaskets that provide both waterproofing and limited ventilation.



Vertical panel joints that are not slotted on all four sides must be filled with weatherproof sealant. Alternatively, by selecting panels slotted on all four sides, the use of weather sealant on vertical joints can be avoided. Vertical panel joints that are not slotted on all four sides must be filled with weatherproof sealant. Alternatively, by selecting panels slotted on all four sides, the use of weather sealant on vertical joints can be avoided.



Option 1: Use weatherproof sealant

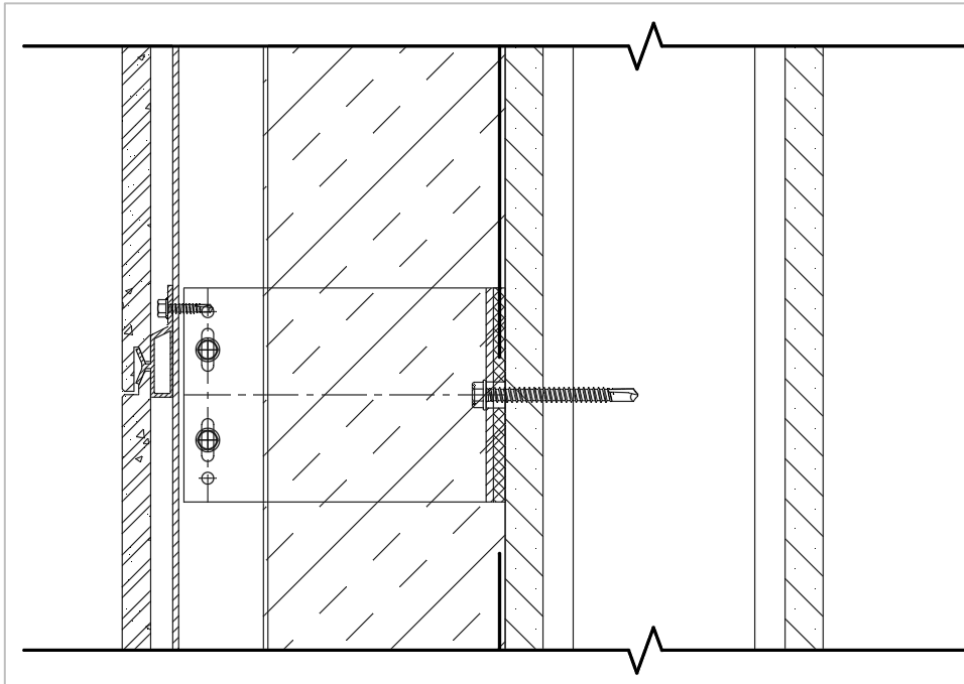


Option 2: Using panels slotted on all four sides

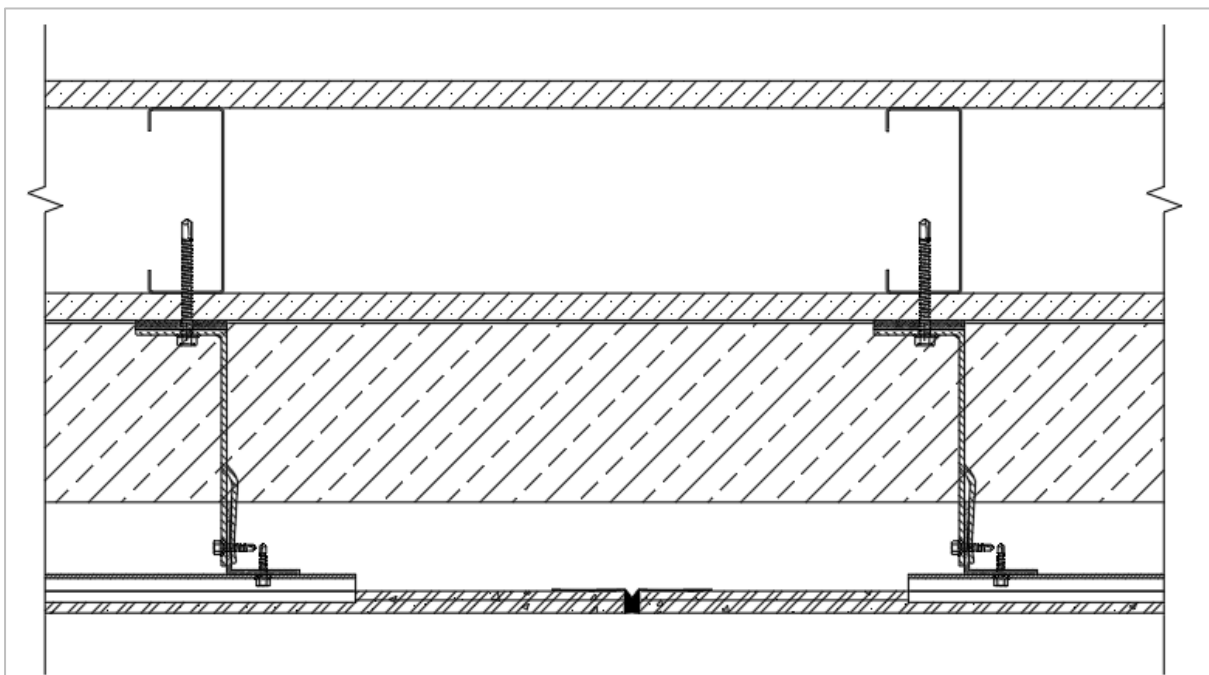
Special Locations

Systems with external insulation

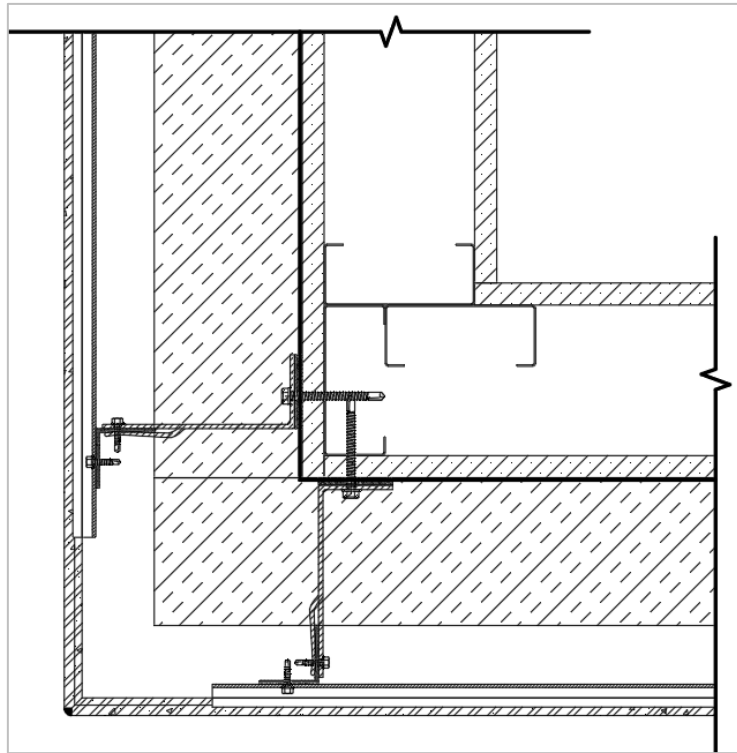
Horizontal Joint Detail:



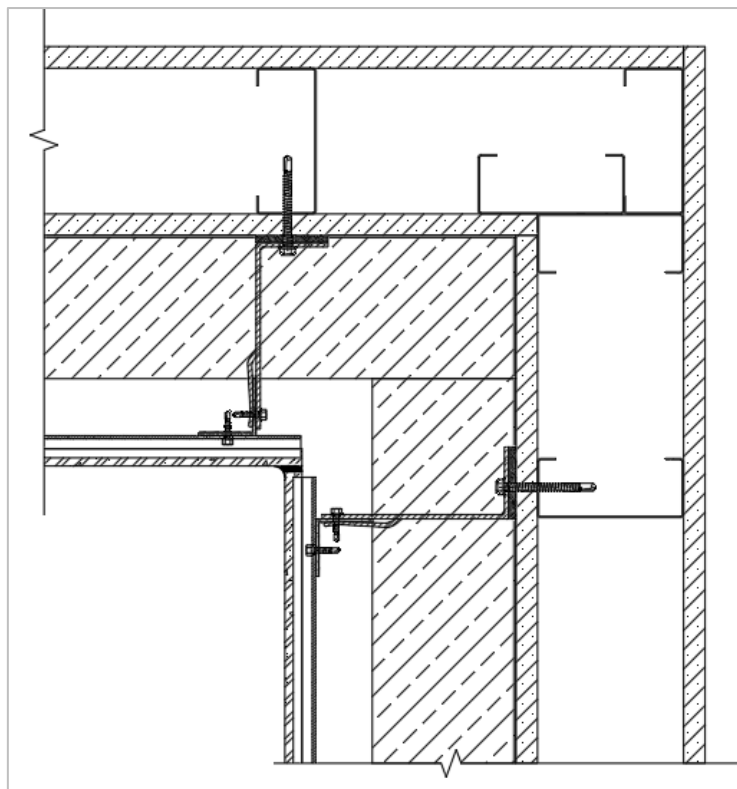
Vertical Joint Detail:



Outer Corner:

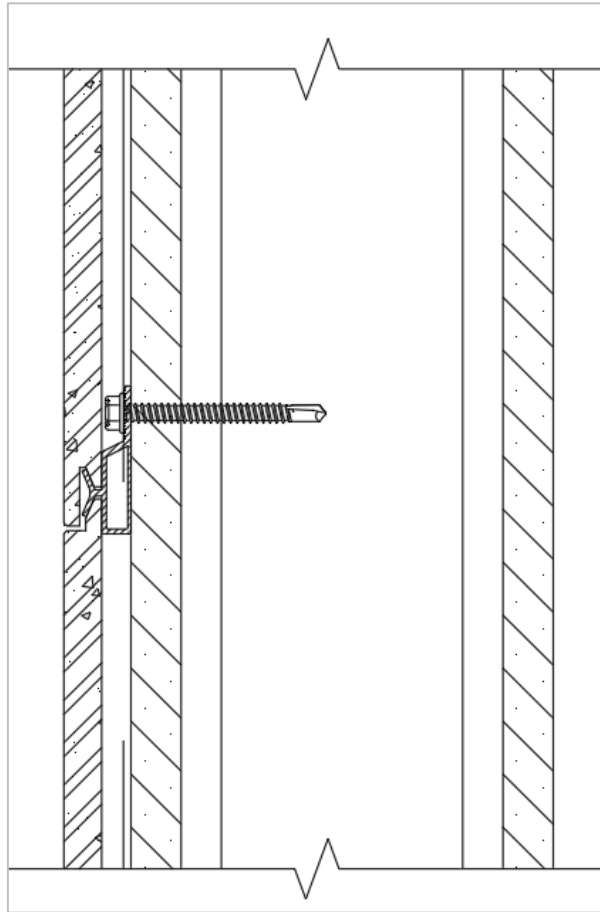


Inner Corner:

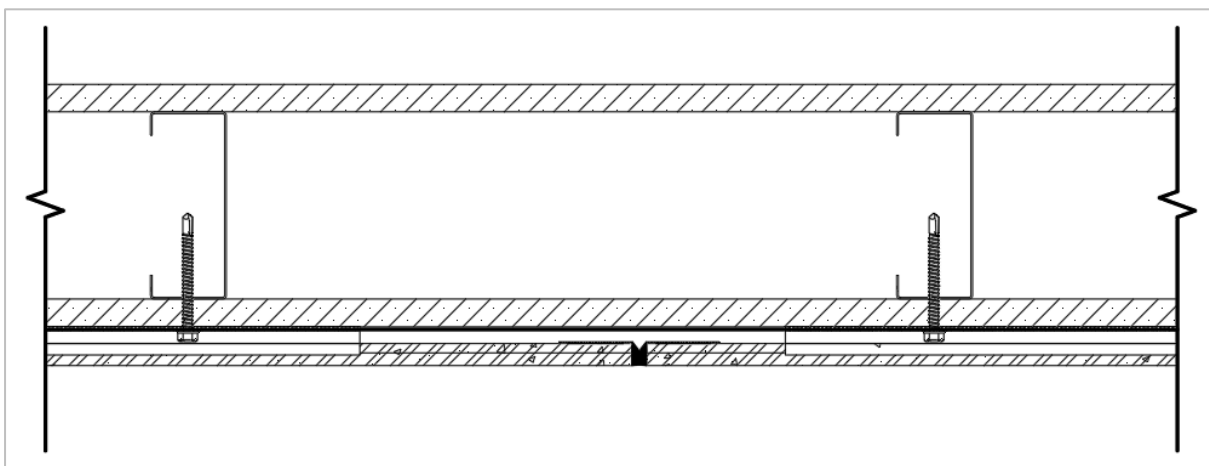


Systems without external insulation

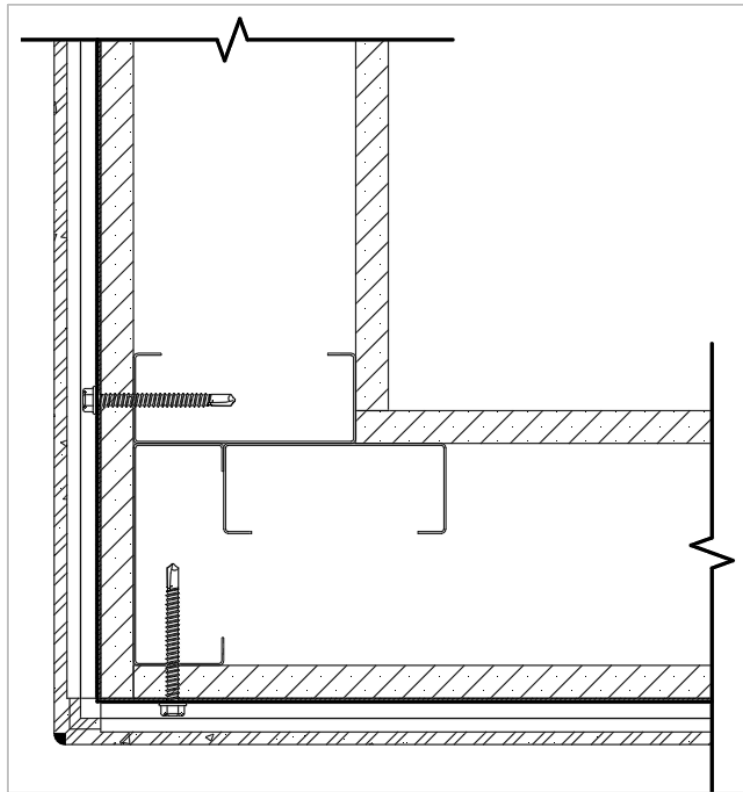
Horizontal Joint Detail:



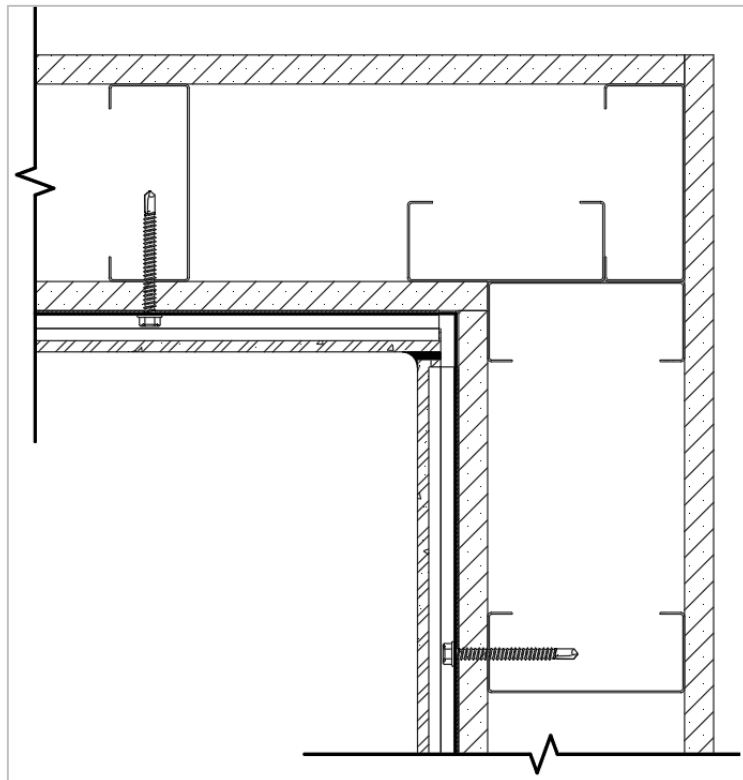
Vertical Joint Detail:



Outer Corner:



Inner Corner:



Panel Layout on Facade

GAJCladding CladForm panels are designed for horizontal mounting on the façade wall. However, if the architect wishes to change the panel layout into a vertical mounting, the special clips shall be customized and used.

Bottom-up Installation

Major steps of working bottom-up approach are as follows:

Step 1. Measure the façade wall from bottom up, mark the lines for each panel's bottom position.

Step 2. Install the vertical supporting frames and fasten the clips with the number required.

Step 3. Place the panel on the clips, then adjust the position horizontally.

Step 4. Place the clips on the top edge of the panel and adjust the panel flatness against the façade wall surface.

Step 5. Repeat the previous steps. Make sure the vertical gaps between two panels are between 6~12mm.

Step 6. After completing the amounting panels, start taping the panel's vertical edges to prepare for the weatherproof sealant caulking.

Step 3. Remove tapes and clean up.

Remarks

Cleaning

There are two methods of cleaning panels, mechanical cleaning and chemical cleaning. In principle, perform the cleaning of the panel over the entire surface, because partial cleaning can result in color and tonal imbalance. Normal stains can be removed with a sponge and water. Warning High Pressure Cleaning is a rough treatment of panel. Use of a high-pressure cleaner may damage the surface. Therefore, high pressure cleaning is not recommended.

Impact by Pollution and Nature

Weather and nearby vegetation may affect the appearance of the panels. Take caution to avoid pollution, dust and leaves from trees, bushes and flowers to not impact the integrity of the panels. Excessive humidity, salts, or other chemical agents can corrode the panel and attack metal.

Special Information

THE INFORMATION OR DATA IN THIS SHEET SERVES TO ENSURE THE PRODUCT'S INTENDED PURPOSE OR ITS SUITABILITY FOR USE AND IS BASED ON OUR FINDINGS AND EXPERIENCE. NEVERTHELESS, USERS ARE RESPONSIBLE FOR ESTABLISHING THE SUITABILITY OF THE PRODUCT FOR ITS INTENDED USE. APPLICATIONS OTHER THAN THOSE EXPLICITLY MENTIONED IN THIS TECHNICAL DATA SHEET ARE ONLY PERMISSIBLE AFTER PRIOR CONSULTATION WITH CHONGQING GUANJIE QIZHONG BUILDING MATERIALS CO., LTD. WHERE NO APPROVAL IS GIVEN, SUCH APPLICATIONS ARE AT THE RISK OF THE USER. THIS APPLIES IN PARTICULAR WHEN THE PRODUCT IS USED IN COMBINATION WITH OTHER PRODUCTS. WHEN A NEW TECHNICAL DATA SHEET IS PUBLISHED, ALL PREVIOUS TECHNICAL DATA SHEETS ARE NO LONGER VALID. THE LATEST VERSION IS AVAILABLE ON THE INTERNET AT WWW.GAJCLADDING.COM.



GAJCladding CladFrom INSTALLATION MANUAL

January 8th, 2026



GAJ CLADDING

FOCUSED FOR OVER 20 YEARS

Chongqing Guanjie Qizhong Building Materials Co., Ltd.
info@gajcladding.com
www.gajcladding.com