

GAJCladding CladForm

INSTALLATION MANUAL - v3.6



GAJ CLADDING

FOCUSED FOR OVER 20 YEARS

Contents

Introduction	2
About GAJCladding CladForm	2
Advantages of GAJCladding CladForm.....	2
Inspection, Proper Handling and Storage.....	3
Product Inspection	3
Storage.....	3
Proper Handling	4
Forklift	4
Basics.....	5
Panel Cutting.....	5
Overview Panel Sizes	5
Panel Technical Date	6
Panel Edge Profile	6
Edge Cleaning & Treatment.....	6
Metal Support.....	7
System Components	7
CladForm Clip	7
CladForm Starter Track.....	8
CladForm Vertical Rail and Clip Fastener	8
Attachment System	9
Panel Joints.....	11
Special Locations	14
Architectural Accessories	14
Bottom-up Installation.....	17
Remarks.....	18

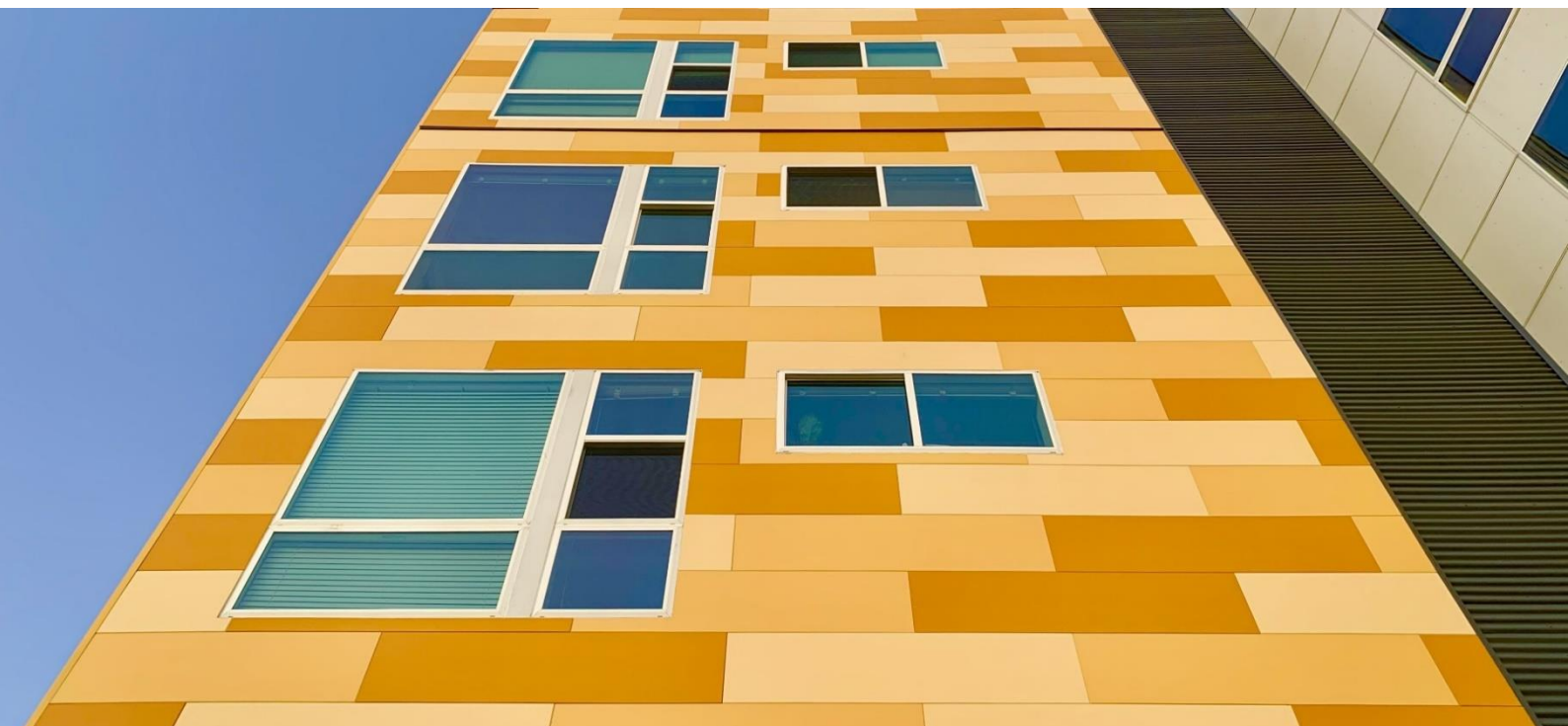
Introduction

About GAJCladding CladForm

CladForm panel system provides you with the GAJCladding unique top-quality fiber cement specific industry coating and finishes on fiber cement board that are ideal for high-end and aesthetic façade solutions, modern and designer arrangements, and top-level exterior architectures. The system uses hidden clips to attach the panels. Let yourself be inspired by our products and present your vision through our endless variations of this single material.

Advantages of GAJCladding CladForm

- Maximum protection against weather
- Excellent longevity, 30 years of decoration life and 15 years of finish warranty
- Light weight and easy for on-site application, and easy installation in any climate
- Almost no maintenance is required.
- High quality panel finishes in strictly controlled environment assure no color fading or coat peeling off.
- High sustainability
- Noncombustible



Inspection, Proper Handling and Storage

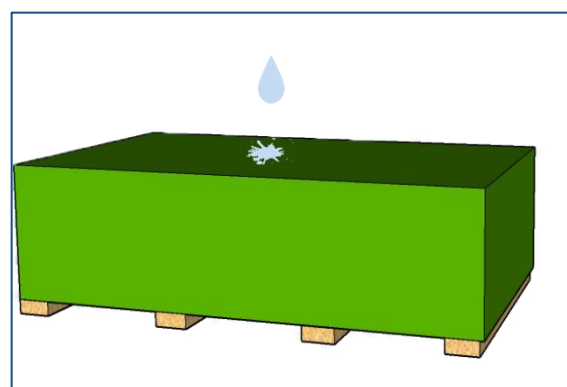
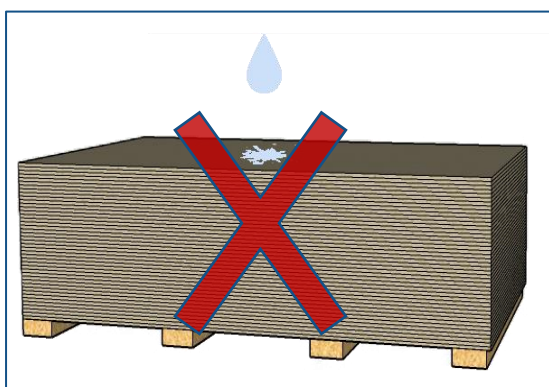
Product Inspection

Please carefully inspect all products before installation, whether they are damaged during transportation or have irregular surface products. Should you have a question or problem with your order, contact your local dealer or GAJCladding Customer Service.

Storage

GAJCladding Panels products are delivered with on the pallet. Hereafter the pallets should be kept under a roof, protected from rainfall, direct sunlight, and other weather influences. If the panel is stored outside, it should be protected with an additional waterproof covering. Any panel to be installed must be kept dry.

GAJCladding Panels must be stored on a flat and dry level surface on pallets or sleepers with a minimum distance of 30cm between the stacks on all sides, leaving the possibility of ventilation around the panels. Maximum 5 pallets in a stack at the warehouse and maximum 2 pallets in a stack on the building site. Each stack should not be more than 1000 mm high. Use foam protection layer between the panels.



It is recommended to organize the pallets of the pre-cut and pre-drilled panels according to their sequences marked by the manufacturer or prefabricator in order to make the installation more efficient.

Proper Handling

Always lift panels off each other by two persons, and do NOT slide them over one another to avoid scratches and damages of the panel surface. To carry the panels, always lift up them vertically and handle their edges by two persons, avoid handling them with panel flat side from facing up or down, as this can result in cracks in the panel. Do NOT draw or drag a panel over or under the next panel, as this operation will cause scratches and damage on the surface. Please note that the damaged panels caused by such operation will not be in the manufacturer's warranty.

Forklift

Fork length must support the pallet entirely; if required, use fork extensions.



Basics

Panel Cutting

All GAJCladding CladForm panels can be cut using a circular saw, or a jigsaw equipped with a diamond tipped blade. The panel can also be cut by a hand tool or a stationary device.

Note 1: When using fast running tools, dust exhaustion must be employed.

Note 2: When using hand tools, cut the panels backside up. When using stationary saw equipment, cut the panels front-side up (the saw blade must always attack the board from the front-side).

Note 3: One panel is cut at one time.

Note 4: Cutting depth should be beyond the panel thickness.

Overview Panel Sizes

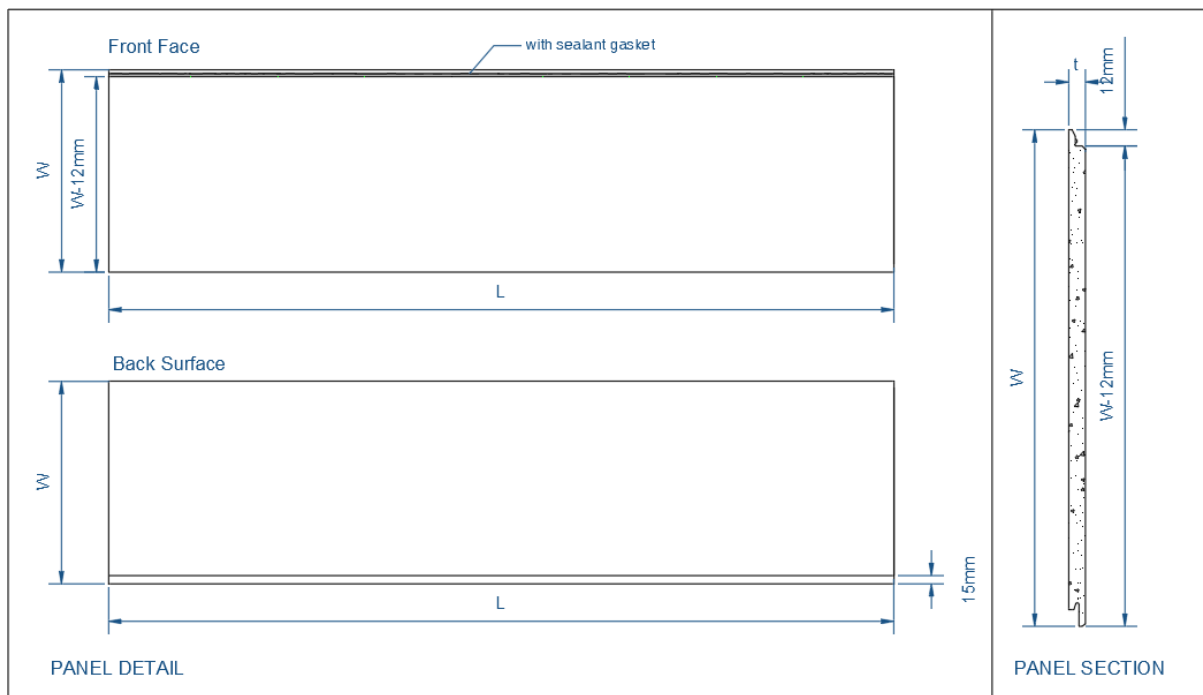
Panel Size (Width x Length x Thickness):

400 / 600 x 2440 x 12 mm

400 / 600 x 2440 x 15 mm

400 / 600 x 3050 x 12 mm

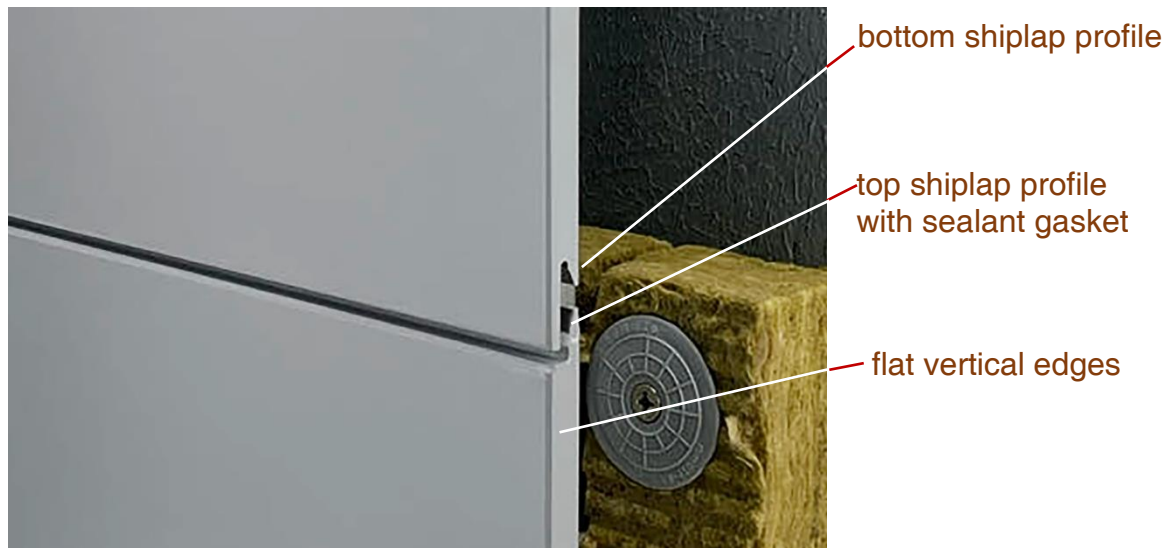
400 / 600 x 3050 x 15 mm



Panel Technical Data

Properties		Text Value
Density		1.47g/cm ³
Flexural Strength (Equilibrium Conditioning))		18.7MPa
Flexural Strength (Wet Conditioning)		13.2MPa
100 Freeze-Thaw Cycles Resistance	Physical Observations	Pass
	Flexural Strength Retention Rate	84.5%
50 Soak/Dry Cycles Performance		97%
Falling Ball Impact		Pass (10J)
Non-Combustibility		Class A

Panel Edge Profile



Edge Cleaning & Treatment

After cutting the panel, sand the cut edges to smooth the surface. Remove dust caused by cutting and drilling from both the front and backside of the panels using a soft brush/duster or a vacuum cleaner.

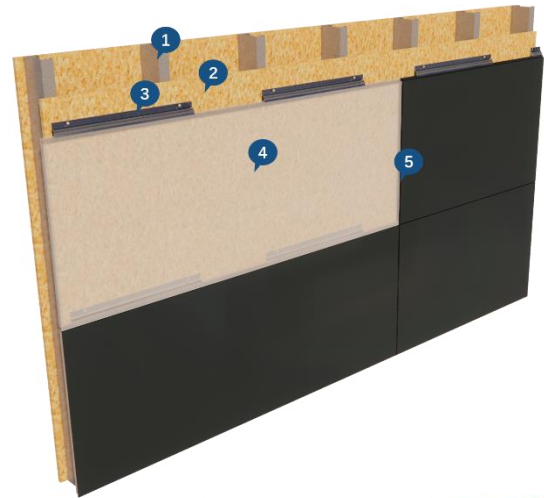
Apply GAJCladding edge sealant or the specified exterior primer to seal the edges and holes. Run the applicator along the panel edges and holes to ensure full coverage. Repeat the application if necessary to achieve complete sealing.

Metal Support

System Components

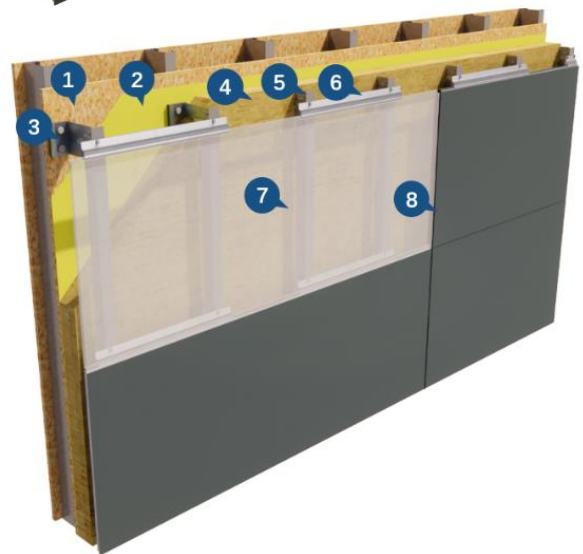
1. Systems without external insulation (GC1)

1. Structural Stud
2. Sheathing & Vapor Barrier
3. Clip
4. CladForm Panel
5. Weatherproof Sealant & Foam Strip



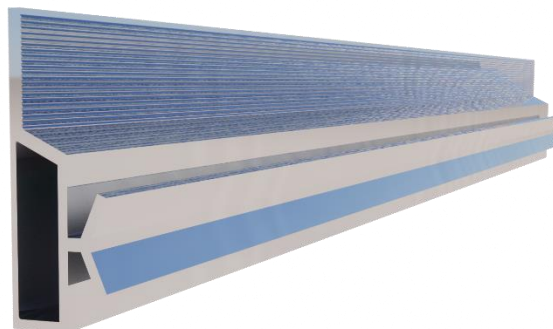
2. Systems with external insulation (GC2)

1. Exterior Wall
2. Vapor Barrier & Waterproof
3. Brackets
4. Exterior Thermal Insulation
5. Vertical Rail
6. Clip
7. CladForm Panel
8. Weatherproof Sealant & Foam Strip



CladForm Clip

Aluminum Clip : Suitable for 12mm panels; available in lengths of 50mm, 100mm, and 508mm; select based on wind load requirements.



Galvanized Steel Clip (57 mm length): Suitable for 15 mm panels.



CladForm Starter Track

For horizontal panel installation, a horizontal Starter Track shall be installed when the panel groove is cut off, such as at panel terminations, window and door openings, or other locations where the clip engagement groove is not continuous. The Starter Track shall provide support for the gravity load of the panel.

For vertical panel installation, a horizontal Starter Track shall be installed at the base of each panel course to support the gravity load of the panels. The Starter Track shall be mechanically fastened to the supporting Wood Stud, Steel Stud, or structural rail system.



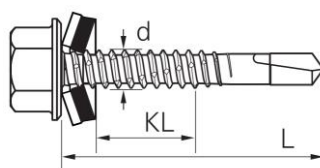
CladForm Vertical Rail and Clip Fastener

1. Vertical Rail:

For aluminum material: Minimum Profile Thickness $\geq 2.5\text{mm}$.

For Galvanized/Stainless Steel material: Minimum Profile Thickness $\geq 1.2\text{mm}$.

2. Clip Fastener

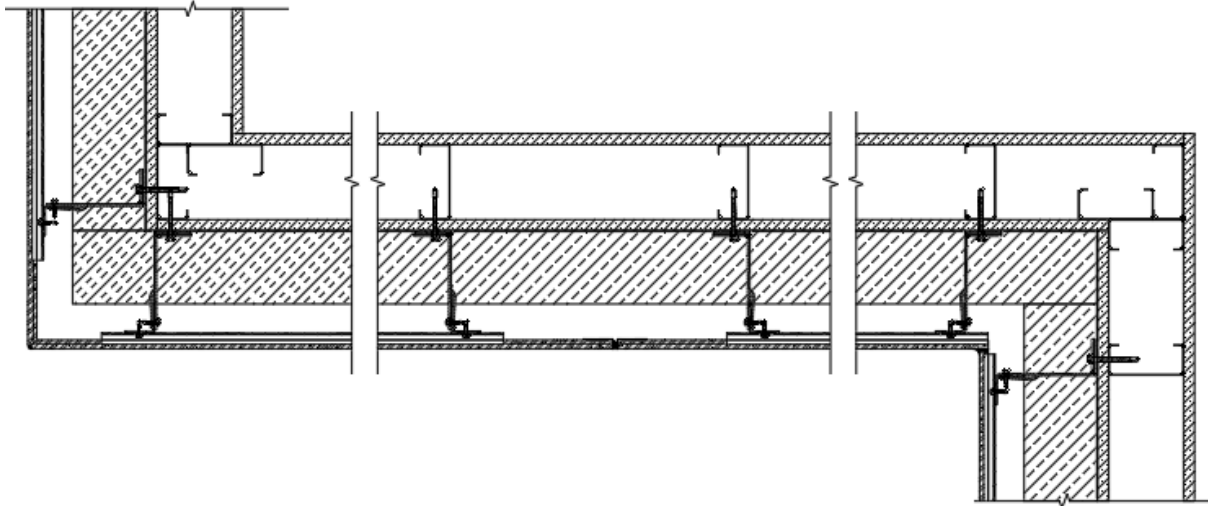


Material: Galvanized/Stainless Steel.

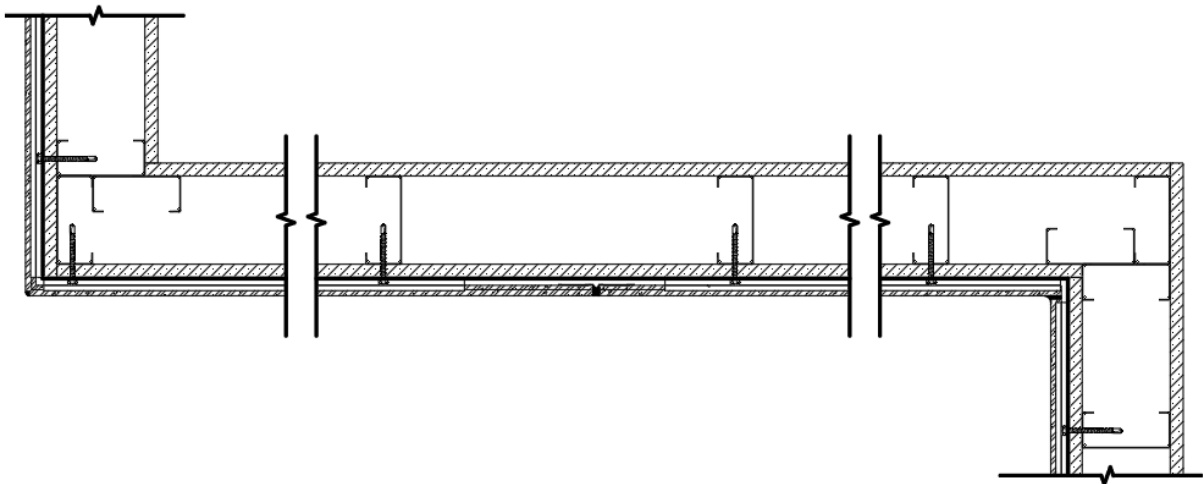
Minimum size: M4.8 x 19, $d \geq 4.8\text{mm}$, $L \geq 19\text{mm}$.

Attachment System

Systems with external insulation



Systems without external insulation



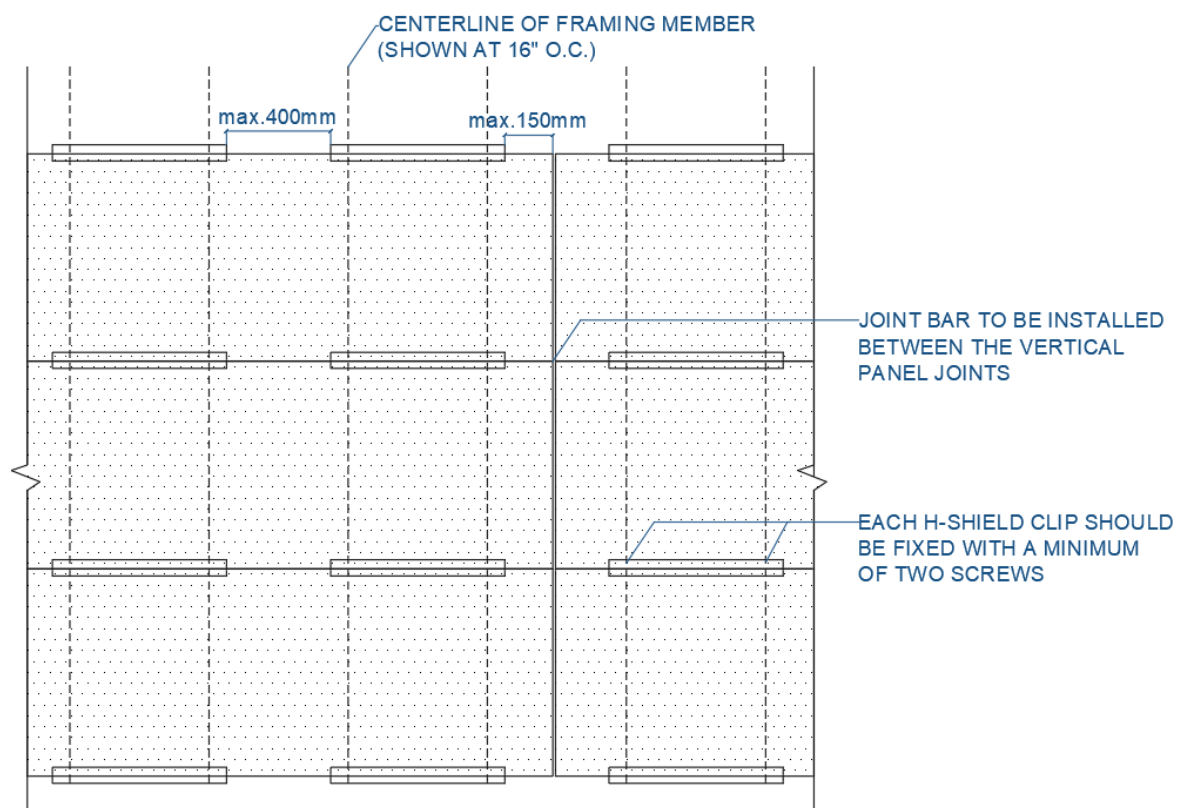
Use GAJCladding CladForm Clips

Use GAJCladding manufactured clips specifically designed for CladForm panels to secure the panels.

When using **57 mm Galvanized Steel Clips**, **50 mm Aluminum Clips**, or **100 mm Aluminum Clips**, each standard panel must be installed with a minimum of six (6) clips. All clips must be fixed with screws to the structural stud or vertical rail. The spacing between clips must

not exceed 406 mm (16" O.C.), and the distance from the clip edge to the panel edge must not exceed 200 mm.

When using 508 mm Aluminum Clips, each clip shall be fixed with a minimum of two (2) screws. Normally, three (3) clips are required for each panel. The spacing between clips, measured from the right edge of one clip to the left edge of the next clip, must not exceed 400 mm. The distance from the clip edge to the panel edge must not exceed 150 mm for 12 mm panels and 200 mm for 15 mm panels. Aluminum clips may be cut when standard clip lengths cannot satisfy these requirements, provided that the above spacing limitations are maintained.



For horizontal panel installation, a minimum of four (4) clips per panel shall be fastened directly to the Wood Stud or Steel Stud. Any remaining clips may be fixed to OSB or plywood sheathing with a minimum thickness of 11 mm.

Where the sheathing consists of gypsum board or other non-structural materials that do not provide sufficient pull-out resistance or fastening strength, all clips shall be fastened directly to the Wood Stud or Steel Stud.

For vertical panel installation, a horizontal Starter Track shall be installed at the base of the panel and shall be mechanically fastened directly to the Wood Stud or Steel Stud. Clips may be fixed directly to OSB or plywood sheathing with a minimum thickness of 11 mm.

Where the sheathing consists of gypsum board or other non-structural materials that cannot provide sufficient pull-out resistance and fastening strength, additional horizontal rails shall be installed to provide adequate support and fastening locations for the clips.

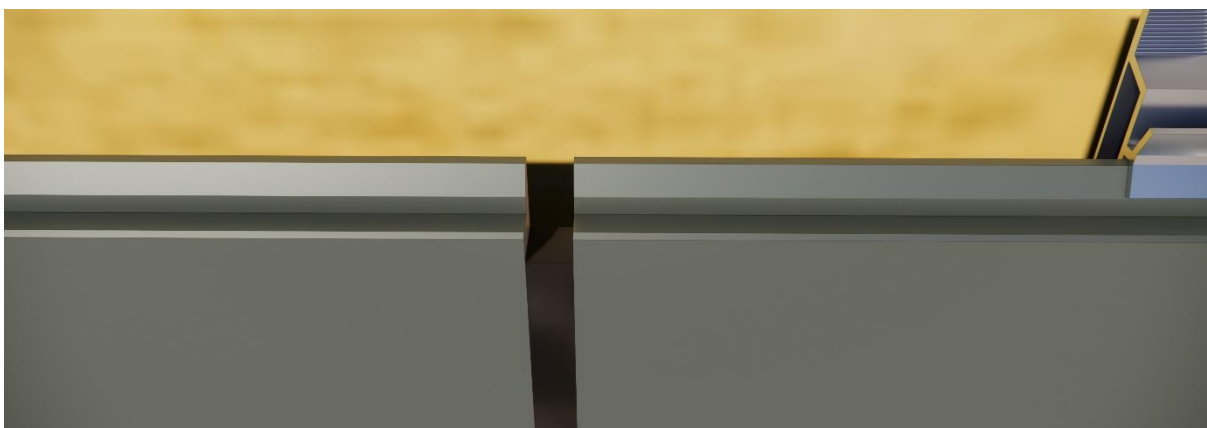
Panel Joints

Horizontal Installation

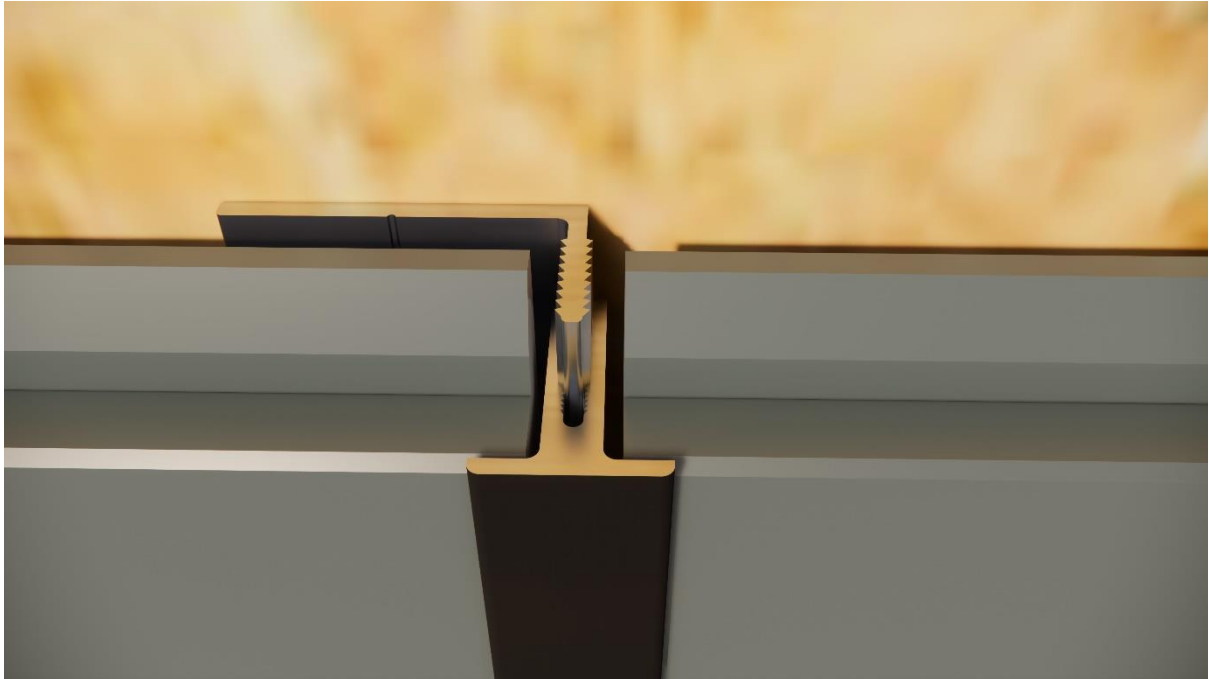
Horizontal panel joints are designed with special structures and gaskets that provide both waterproofing and limited ventilation.



Vertical panel joints shall be treated with either a weatherproof sealant or a GAJCladding T-profile Joint Trim.



Option 1: Use weatherproof sealant



Option 2: Using T-profile Joint Trim

For selected 2440 mm panel lengths, four-side slotted panels are available as an alternative joint solution.



Option 3: Using panels slotted on all four sides

Direct panel-to-panel contact is not permitted. Panels shall never be installed in a closed butt-joint condition. A minimum joint gap (5mm) as specified by GAJCladding shall be maintained at all vertical joints.

Install all joint treatments in accordance with GAJCladding installation requirements.

Vertical installation

At all horizontal joints in vertical panel installations, a horizontal Starter Track shall be installed to support the dead load of the panels and transfer gravity loads to the supporting structure.

A Joint Flashing shall be installed behind the horizontal joint to provide drainage and prevent water intrusion. The flashing shall be designed to direct water to the exterior of the wall assembly.



Special Locations

Special attention shall be given to panel terminations, window and door openings, inside and outside corners, horizontal joints, and other locations where panel continuity is interrupted.

All such conditions shall be installed in accordance with the applicable GAJCladding Architectural Details.

Where panel grooves are removed, interrupted, or otherwise unable to engage standard clips, appropriate Starter Tracks, trims, flashings, or alternative support methods shall be provided.

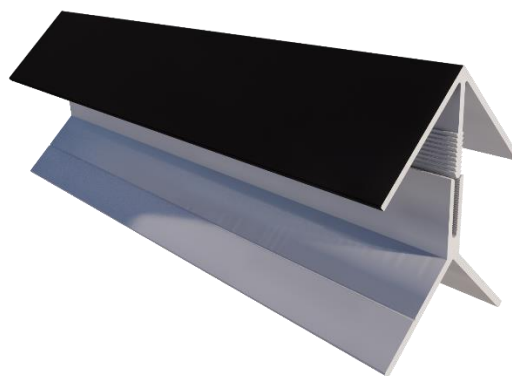
All openings shall be properly flashed and detailed to prevent water intrusion into the wall assembly.

Architectural Accessories

Outer Corner Trim

The GAJCladding Outer Corner Trim is designed to provide a clean and durable finish at external corners while accommodating panel movement and installation tolerances.

Material: Aluminum Alloy 6063-T5



Inner Corner Trim

The GAJCladding Inner Corner Trim is designed to provide a clean and durable finish at internal corners while accommodating panel movement and installation tolerances.

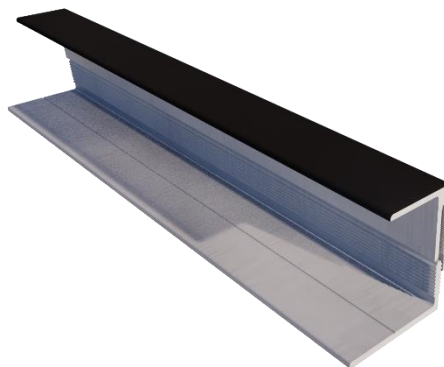
Material: Aluminum Alloy 6063-T5



Jamb Trim

The GAJCladding Jamb Trim is designed to provide a clean and durable finish at window and door jambs while accommodating panel movement and installation tolerances.

Material: Aluminum Alloy 6063-T5



Window Sill Trim

The GAJCladding Window Sill Trim is designed to provide a clean and durable finish at window sill conditions while promoting proper drainage and water shedding away from the wall assembly.

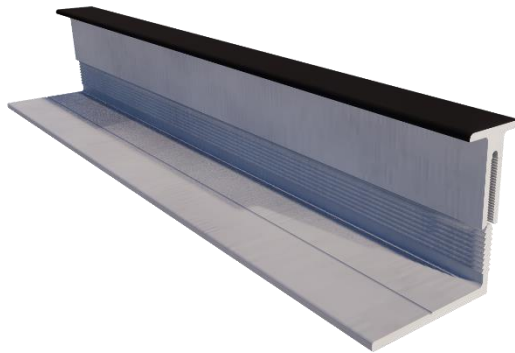
Material: Aluminum Alloy 6063-T5



T-Profile Joint Trim

The GAJCladding T-Profile Joint Trim is designed to provide a clean and durable joint treatment between adjacent panels in horizontal panel installations while maintaining a consistent joint appearance.

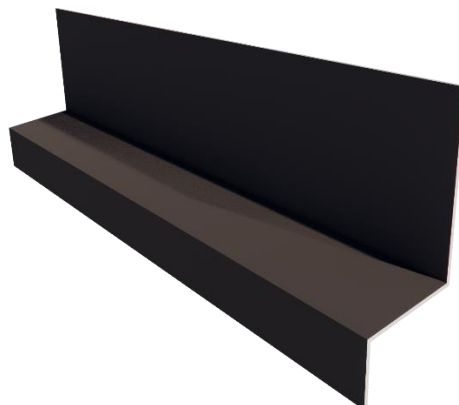
Material: Aluminum Alloy 6063-T5



Z-Profile Flashing

The GAJCladding Z-Profile Flashing is designed to provide drainage, water shedding, and weather protection at critical transitions within the CladForm Panel System.

Material: Aluminum Alloy 6063-T5



Bottom-up Installation

Major steps of working bottom-up approach are as follows:

Step 1. Measure the façade wall from bottom up, mark the lines for each panel's bottom position.

Step 2. Install the vertical supporting frames and fasten the clips with the number required.

Step 3. Place the panel on the clips, then adjust the position horizontally.

Step 4. Place the clips on the top edge of the panel and adjust the panel flatness against the façade wall surface.

Step 5. Repeat the previous steps. Make sure the vertical gaps between two panels are between 6~12mm.

Step 6. After completing the amounting panels, start taping the panel's vertical edges to prepare for the weatherproof sealant caulking.

Step 3. Remove tapes and clean up.

Remarks

Cleaning

There are two methods of cleaning panels, mechanical cleaning and chemical cleaning. In principle, perform the cleaning of the panel over the entire surface, because partial cleaning can result in color and tonal imbalance. Normal stains can be removed with a sponge and water. Warning High Pressure Cleaning is a rough treatment of panel. Use of a high-pressure cleaner may damage the surface. Therefore, high pressure cleaning is not recommended.

Impact by Pollution and Nature

Weather and nearby vegetation may affect the appearance of the panels. Take caution to avoid pollution, dust and leaves from trees, bushes and flowers to not impact the integrity of the panels. Excessive humidity, salts, or other chemical agents can corrode the panel and attack metal.

Special Information

THE INFORMATION OR DATA IN THIS SHEET SERVES TO ENSURE THE PRODUCT'S INTENDED PURPOSE OR ITS SUITABILITY FOR USE AND IS BASED ON OUR FINDINGS AND EXPERIENCE. NEVERTHELESS, USERS ARE RESPONSIBLE FOR ESTABLISHING THE SUITABILITY OF THE PRODUCT FOR ITS INTENDED USE. APPLICATIONS OTHER THAN THOSE EXPLICITLY MENTIONED IN THIS TECHNICAL DATA SHEET ARE ONLY PERMISSIBLE AFTER PRIOR CONSULTATION WITH CHONGQING GUANJIE QIZHONG BUILDING MATERIALS CO., LTD. WHERE NO APPROVAL IS GIVEN, SUCH APPLICATIONS ARE AT THE RISK OF THE USER. THIS APPLIES IN PARTICULAR WHEN THE PRODUCT IS USED IN COMBINATION WITH OTHER PRODUCTS. WHEN A NEW TECHNICAL DATA SHEET IS PUBLISHED, ALL PREVIOUS TECHNICAL DATA SHEETS ARE NO LONGER VALID. THE LATEST VERSION IS AVAILABLE ON THE INTERNET AT WWW.GAJCLADDING.COM.



GAJCladding CladFrom INSTALLATION MANUAL

January 8th, 2026



GAJ CLADDING

FOCUSED FOR OVER 20 YEARS

Chongqing Guanjie Qizhong Building Materials Co., Ltd.

info@gajcladding.com

www.gajcladding.com