

Shield

Modern Rainscreen Architecture

Shield at a Glance

Shield is a modern rainscreen architecture system integrating structure, installation logic, and facade performance.

--- Systemized Installation Logic

Pre engineered system design that minimizes on site uncertainty.

--- Precision and Adjustability

Built in adjustability ensures facade flatness and joint consistency.

--- Long Term Performance

Designed for ventilation efficiency, durability, and stable load transfer.

Shield is not a component. It is an architectural system.



GAJCLADDING

Contents

Shield at a Glance <i>A modern rainscreen architecture system integrating structure and facade performance</i>	1
About GAJCladding <i>Manufacturer background and pre coated expertise</i>	5
Why Pre-coated Fiber Cement Board <i>Material structure and performance advantages for architectural cladding</i>	7
Shield System Overview <i>Panels, and support systems working together</i>	13
Surface Expressions <i>Exploring texture, rhythm, and surface articulation</i>	19

24

Years of Experience

20,000

Production Base(㎡)

8,000,000

Annual Production(㎡)

76

Patents

FOCUSED ON BUILDING ENVELOPE SYSTEMS FOR OVER 20 YEARS

Established in 2002, GAJCladding specializes in the research, design, manufacturing, and delivery of energy efficient and decorative building envelope systems. With over two decades of industry experience, we focus on high performance fiber cement cladding and integrated support systems for ventilated facade applications.

Our fiber cement cladding systems offer a wide range of surface textures and color solutions, combining durability, aesthetics, and long term performance. Through advanced pre coating processes and systematic product development, we provide reliable solutions that meet both architectural design intent and practical construction requirements.

Professionalism, dedication, and sincere service define our approach. We work closely with designers, contractors, and material suppliers to address technical challenges and deliver complete, dependable system solutions rather than isolated products.

Our vision is to become a trusted global partner in building envelope system solutions by continuously raising product standards, advancing technical capabilities, and contributing to the sustainable development of the industry.

ABOUT US





Why Pre-coated Fiber Cement

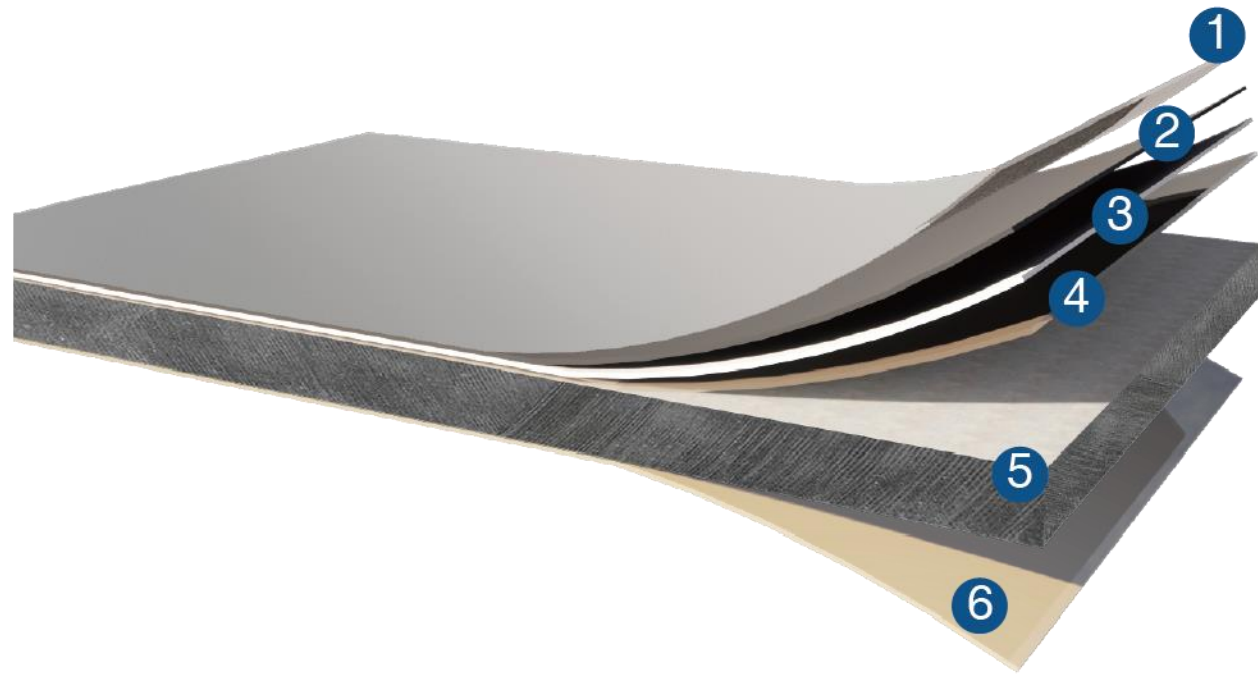
Pre-coated fiber cement panels combine structural durability with controlled surface performance, offering a reliable solution for modern building envelopes. By applying coatings under factory controlled conditions, surface quality, color consistency, and long-term adhesion can be precisely managed.

At GAJCladding, high-density fiber cement boards are used as the carrier, followed by a proprietary pretreatment process and a scientifically developed coating system. This integrated process significantly enhances coating adhesion, weather resistance, and color stability, ensuring consistent performance throughout the product's service life.

With a wide range of textures and color finishes, pre-coated fiber cement enables architects to translate design intent into durable, buildable façade solutions, while reducing on-site work and long-term maintenance requirements.

Not Just the Panels + Coatings

GAJCladding pre-coated fiber cement panels are designed as an integrated layered system. Each layer plays a specific role to ensure long-term performance, adhesion, durability, and aesthetic consistency. Unlike simple panel-and-coating products, our system delivers controlled surface performance under diverse environmental conditions.



- 1. Protective Layer**
Enhances the coating's resistance to UV radiation and surface staining
- 2. Top-coat Layer**
3 super UV-resistant and decorative coats for long-lasting aesthetics
- 3. Base-coat Layer**
Enhance the Aesthetics of the Coating
- 4. Pre-treatment Layer**
Enhances the visual depth and texture of the coating
- 5. Carrier Board**
High-density fiber cement board providing structural strength
- 6. Waterproof Layer**
Seals the sides and back of the panel to prevent moisture ingress



Proven Performance

Dirt Resistance, Frost and UV Resistance

GAJCladding pre-coated panels maintain their appearance even under harsh climates:

- **Dirt Resistance:** Minimizes surface staining and simplifies maintenance.
- **Frost Resistance:** Panels withstand repeated freeze-thaw cycles without delamination.
- **UV Resistance:** Accelerated UV tests and real-world projects confirm long-term color stability.

Across multiple projects in cold, humid, and high-UV environments, GAJCladding panels consistently retain their original color and surface quality.



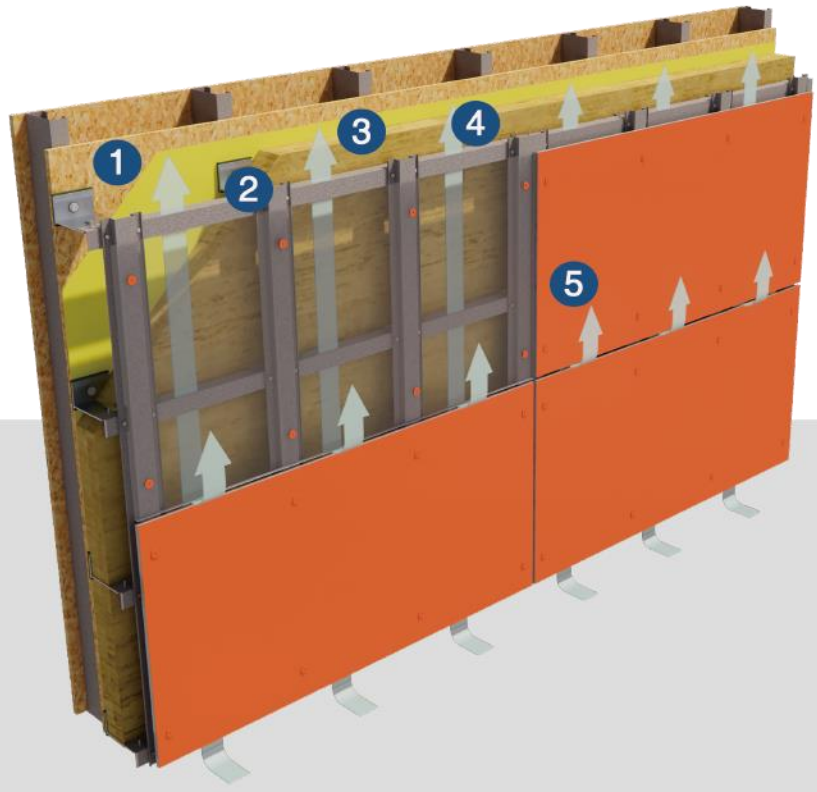
Completed in 2006
Photographed in 2023

Shield System Overview

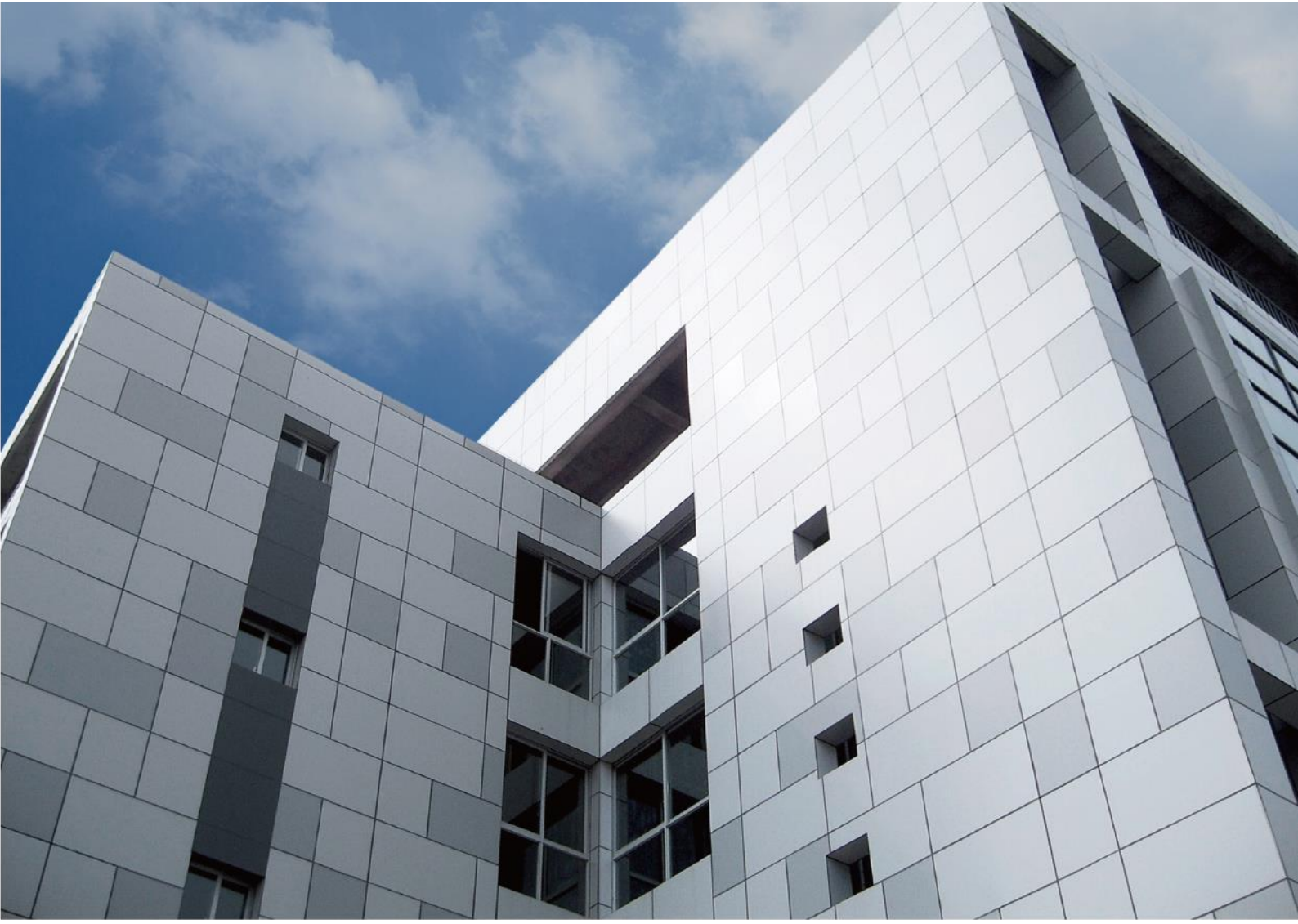
The Shield series consists of V Shield and U Shield, both designed as ventilated rainscreen systems for modern facade architecture.

While sharing the same core rainscreen principles, the two systems differ in their anchoring expression, allowing designers to choose between visible or concealed structural articulation.

- **Ventilated Facade Principle**
A controlled cavity behind the panels supports moisture regulation and façade durability.
- **Flexible Installation Logic**
2 installation approaches accommodate both flat substrates and complex wall conditions.
- **Integrated System Design**
Panels, fixings, and support components are designed to work as one system.



- 1. Exterior Wall
- 2. Support Frame
- 3. Exterior Thermal Insulation
- 4. Ventilated Cavity
- 5. GAJCladding Shield Panel



Installation Options

Shield offers 2 anchoring approaches to suit different architectural expressions and installation requirements: V-Shield with visual anchoring, and U-Shield utilizing undercut anchoring.

• V-Shield Installation System

The V-Shield System is a visual anchoring system that turns functional fixing into a deliberate architectural expression.

By exposing the anchors, the system clearly communicates structural logic while securely supporting the cladding.

It creates a modern, industrial facade character where mechanical details become part of the design language.



1. Exterior Wall
2. Vapor Barrier & Waterproof
3. Brackets
4. Exterior Thermal Insulation
5. Horizontal Rail
6. Vertical Rail
7. V-Shield Panel
8. Rivet or Panel Anchor



Suitable for: Lightweight 8 mm panel applications
Cost efficient facade solutions
Projects accepting visible anchoring

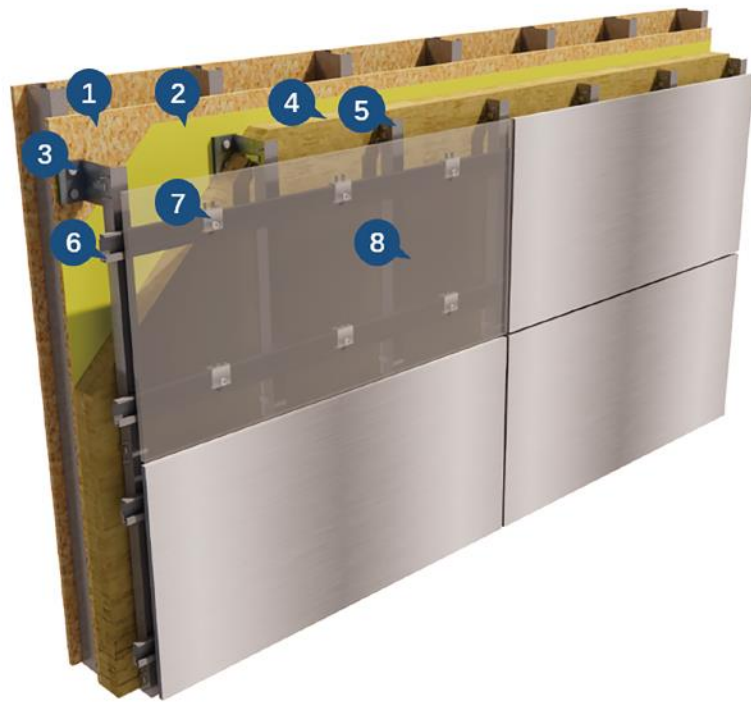


• U-Shield System Installation

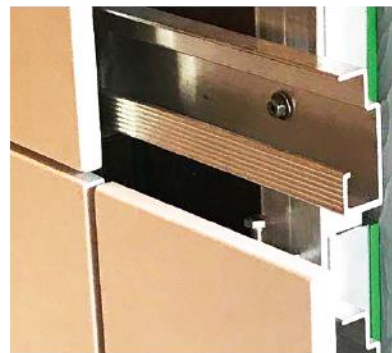
The U Shield Rainscreen System utilizes concealed undercut anchoring to create a refined, continuous facade surface.

Fixings are positioned at the rear of the panel, maintaining structural reliability while keeping the facade visually uninterrupted.

The coordinated support system improves thermal efficiency by minimizing thermal bridging and maintaining full insulation performance.



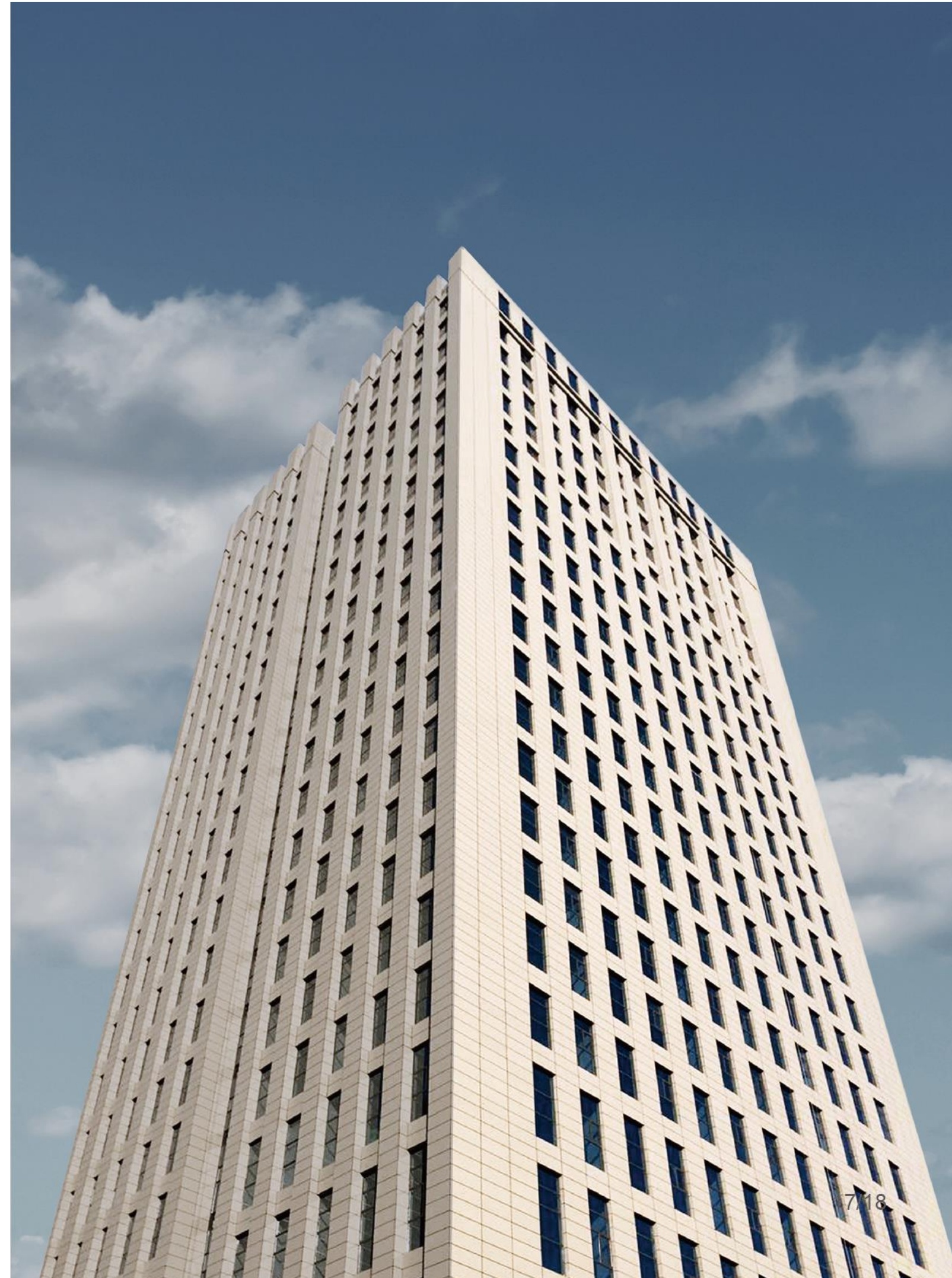
1. Exterior Wall
2. Vapor Barrier & Waterproof
3. Brackets
4. Exterior Thermal Insulation
5. Vertical Rail
6. C-Profile Horizontal Rail
7. C-Profile Clip & Undercut
8. U-Shield Panel



Suitable for: 12 mm panel applications

Projects requiring concealed anchoring

High end architectural facades



Surface Expressions

GAJCladding's pre-coated fiber cement panels are designed as a medium for architectural expression rather than a mere facade material. Through refined surface treatments, carefully calibrated textures, and a wide spectrum of colors, the panels translate form, rhythm, and proportion into a distinctive facade language.

From subtle mineral finishes to bold geometric compositions, GAJCladding enables architects to shape surfaces with depth, contrast, and visual continuity. The panels respond naturally to light and shadow, allowing facades to evolve throughout the day while maintaining a controlled and intentional aesthetic.

Beyond appearance, the advanced coating system ensures that the visual character of the facade remains stable over time. Colors retain their clarity, surfaces resist staining and abrasion, and architectural details stay sharp, allowing the original design intent to be preserved long after installation.



Metalshell



Texture: Smooth

Customized Color: RAL Color Chart

Panel Size: 1220 x 2440 mm

Thickness: 6 mm, 8 mm, 10 mm, 12 mm, 15 mm

The Metalshell series presents a smooth surface with a refined metallic texture and controlled light reflection. Its subtle shimmer adds depth and movement to the facade under varying light conditions. Based on the RAL color chart, customized metallic tones can be specified to meet diverse architectural design requirements. Designed for contemporary architecture, it delivers a modern material expression with a distinctive metallic character.



M10



M15



M30



M40



M50



M61



M63



M65



M67



M70



M80



Ceramicshell



Texture: Smooth

Customized Color: RAL Color Chart

Panel Size: 1220 × 2440 mm

Thickness: 6 mm, 8 mm, 10 mm, 12 mm, 15 mm

The Ceramicshell series features a smooth, uniform surface with precise color expression. Based on the RAL color chart, it supports customized color selection to meet specific architectural design requirements. Its clean surface and stable color performance make it an ideal choice for facades that emphasize clarity, minimalism, and strong visual identity.



110



115



130



150



201



204



205



210



305



505



515



535



555



615



640



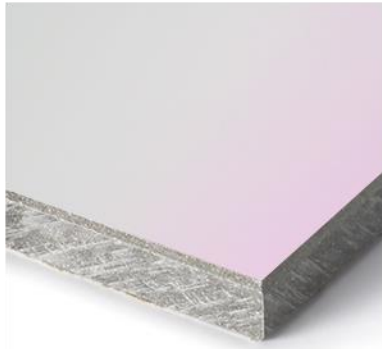
650



660



Pearlshell



Texture: Smooth

Customized Color: N/A

Panel Size: 1220 x 2440 mm

Thickness: 6 mm, 8 mm, 10 mm, 12 mm, 15 mm

The Pearlshell series features distinctive pigmented finishes enhanced with pearl powder to create a subtle iridescent and shimmering effect. Its surface reacts gently to changing light, producing depth and soft color variation across the facade. Available in a curated selection of standard tones, Pearlshell offers a unique visual character that cannot be replicated through conventional color customization.



P10



P20



P30



P40



P55



P65

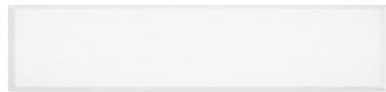


Fabricshell



Texture: Fabric-Inspired Texture
Customized Color: RAL Color Chart
Panel Size: 1220 x 2440 mm
1220 x 3050 mm
Thickness: 6 mm, 8 mm, 10 mm, 12 mm, 15 mm

The Fabricshell series features a refined fabric-inspired texture that adds softness and visual depth to the facade. Subtle surface relief creates a tactile appearance while maintaining a clean architectural expression. Based on the RAL color chart, customized colors allow Fabricshell to adapt to diverse design concepts, making it ideal for facades seeking warmth and contemporary elegance.



F10



F20



F35



F40



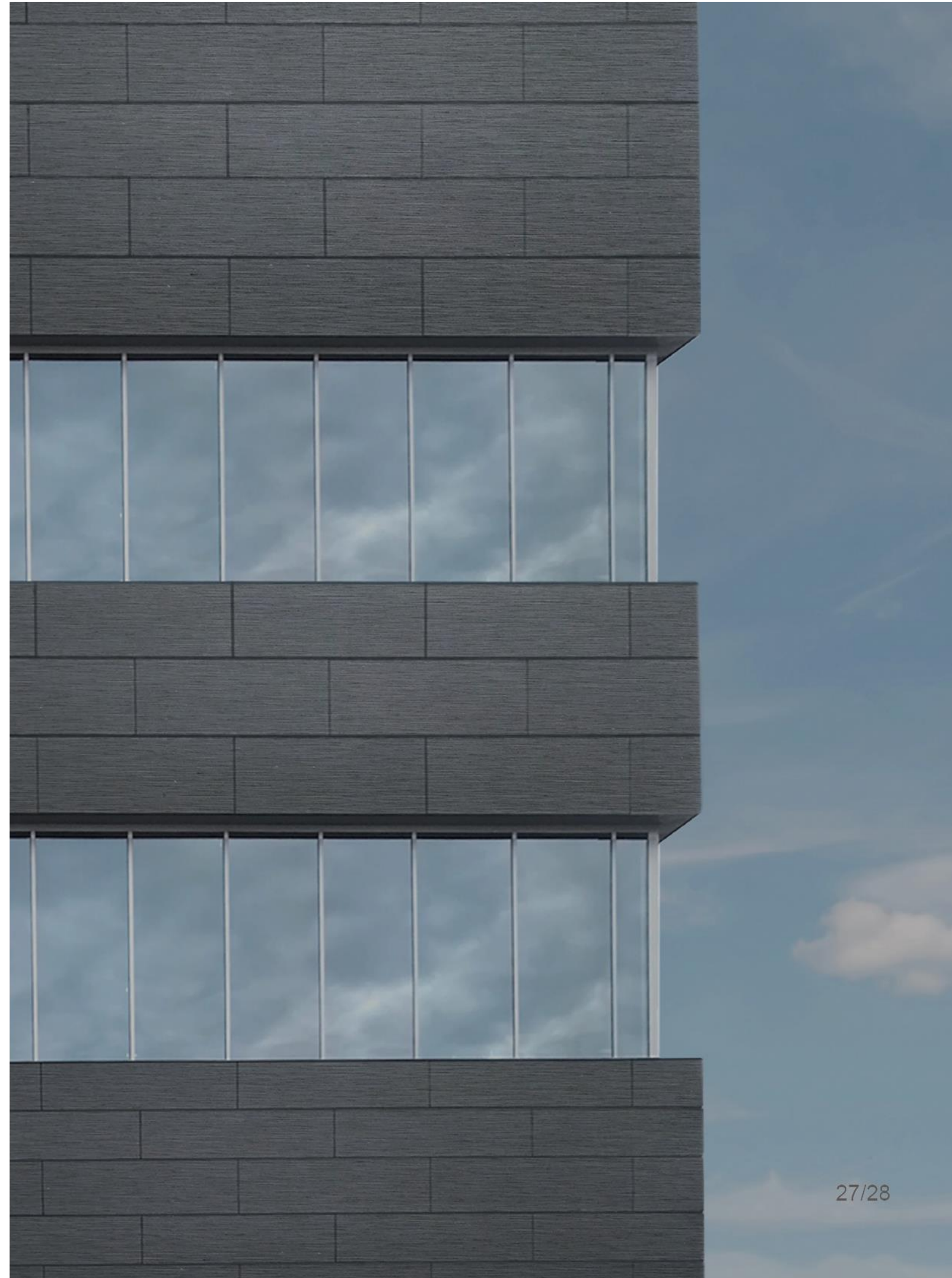
F50



F55



F59



Splendidshell



Texture: Smooth

Customized Color: Developed from client reference

Panel Size: 1220 x 2440 mm

1220 x 3050 mm

Thickness: 6 mm, 8 mm, 10 mm, 12 mm, 15 mm

The Splendidshell series combines a smooth surface with dynamic flaky and chipped color effects. It delivers strong visual texture while maintaining refined surface quality. Designed for long term exterior performance, it provides excellent UV resistance, high resistance to graffiti and environmental contaminants, and easy maintenance.



S01



S02



S03



S10



S25



S45



S47



S55



S60



S61



S78



S80



S85



S90



S95



S96



Graniteshell



Texture: Flamed granite texture
Customized Color: Granite texture customization only
Panel Size: 1220 × 2440 mm
Thickness: 6 mm, 8 mm, 10 mm, 12 mm, 15 mm

The Graniteshell series replicates the textured expression of flamed granite with a richly grained surface finish. Formulated with mineral based coating materials, it delivers a natural stone appearance with depth and authenticity. Engineered for exterior durability, Graniteshell provides excellent UV resistance, high resistance to graffiti and environmental contaminants, and maintains ease of cleaning throughout its lifecycle.



G05



G12



G15



G20



G30



G40



G45



G50



G55



G70



G75



G85



Wiryshell



Texture: Undulate
Customized Color: RAL Color Chart
Panel Size: 1220 x 2440 mm
 1220 x 3050 mm
Thickness: 6 mm, 8 mm, 10 mm, 12 mm, 15 mm

The Wiryshell series features a gently undulating surface combined with a smooth, vibrant finish, creating a dynamic and contemporary façade expression. Its subtle wave texture enhances light and shadow interplay, delivering a modern and avant-garde architectural appearance.



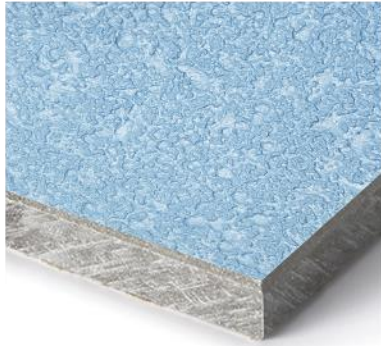
W01



W66



Relievoshell



Texture: Rough texture
Customized Color: RAL Color Chart
Panel Size: 1220 x 2440 mm
Thickness: 6 mm, 8 mm, 10 mm, 12 mm, 15 mm

The Relievoshell series features a bold sculpted relief surface with a distinctly rough texture. Rich color depth enhances the three-dimensional effect, bringing strength and character to architectural façades.



R10



R20



R60

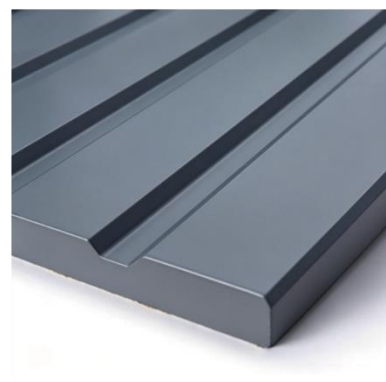


R68



R70

Ridgeshell



Texture: Smooth

Customized Color: RAL Color Chart

Panel Size: 1220 x 2440 mm

1220 x 3050 mm

Thickness: 10 mm, 12 mm, 15 mm



Texture: Wiryshell finish



Texture: Fabricshell finish



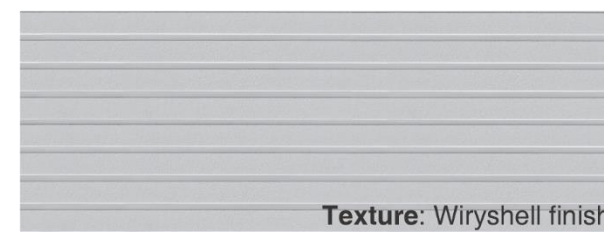
RC11

Texture: Smooth



RF10

Texture: Fabricshell finish



RW10

Texture: Wiryshell finish



RW80

Texture: Wiryshell finish

The Ridgeshell series is engineered using CNC carving technology to create precise linear grooves on the panel surface, followed by advanced coating treatment. The structured relief enhances the interplay of light and shadow, delivering a dynamic and expressive façade character.

Texture: Wiryshell finish

Texture: Fabricshell finish



GAJ CLADDING

FOCUSED FOR OVER 20 YEARS
INNOVATIVE FACADE SOLUTIONS FOR A SUSTAINABLE FUTURE